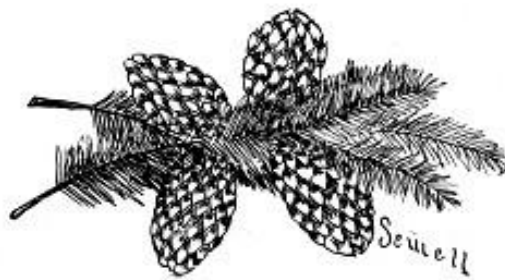
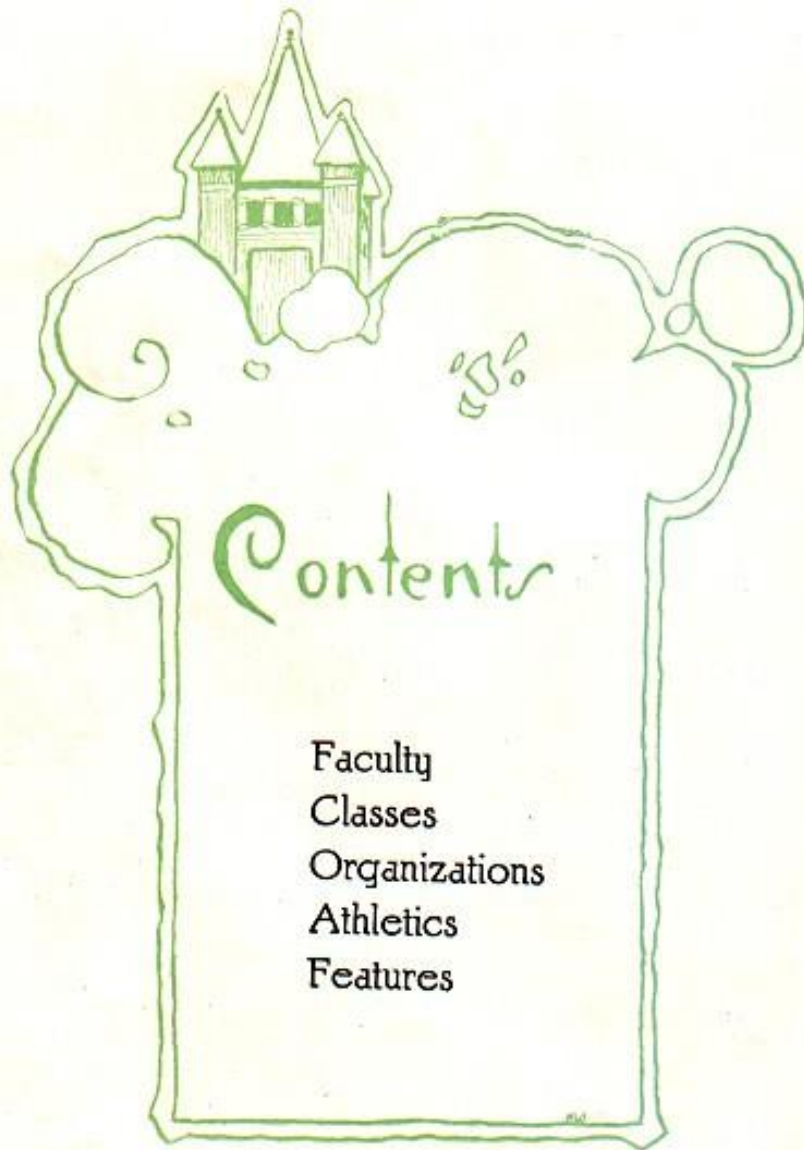


The
PINE CONE
1923



VOLUME II

PUBLISHED BY
THE SENIOR CLASS
PINEVILLE HIGH
SCHOOL



Contents

- Faculty
- Classes
- Organizations
- Athletics
- Features



Foreword

IT is not our desire in the publication of this volume to offer to the world an imperishable work of literature, but merely to record in simple and effective manner the deeds of our high school days, so that in future life we may turn through these pages and live once again those days we spent in the halls of Pineville High School. Hence, stranger look not upon our work with critical eyes, but become as one of us, that you may the more appreciate the contents of this volume.

THE PINE CONE



MRS. L. H. MONTGOMERY

Dedication

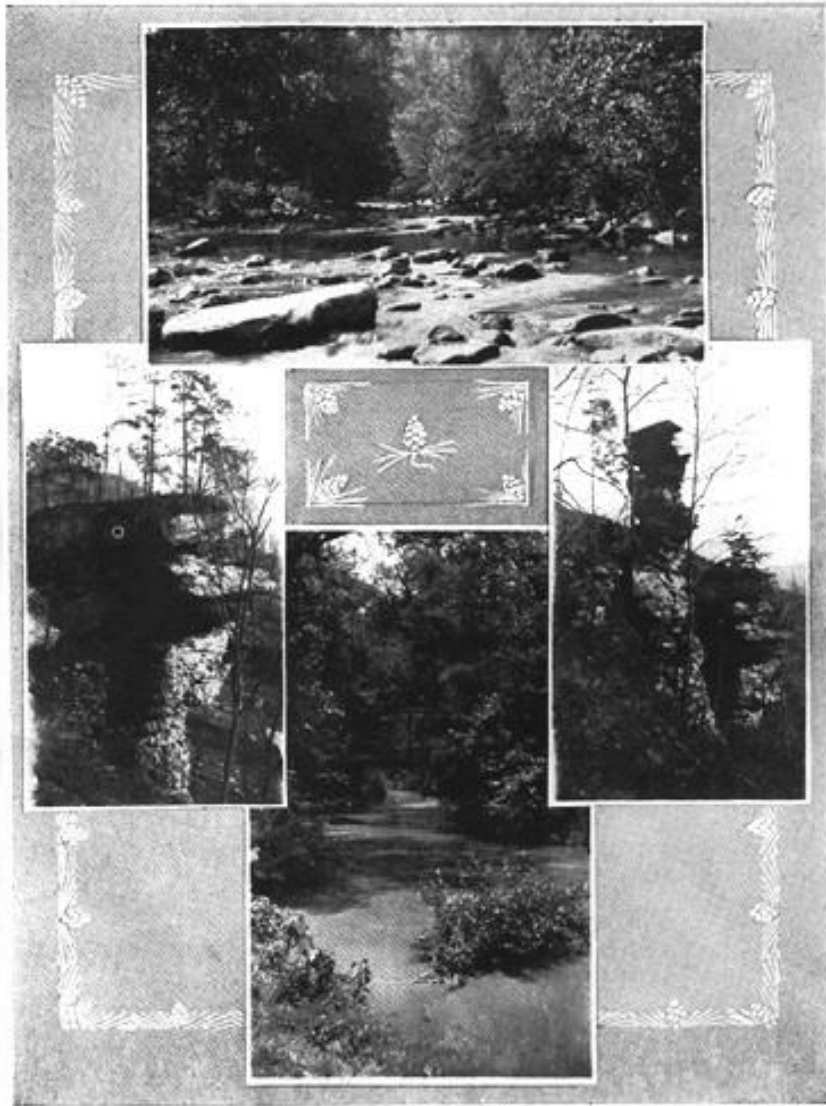
To one whose life has been, and is a living influence for better for all true members of Pineville High School is this volume of the Pine Cone dedicated. "e" "e"

THE PINE CONE



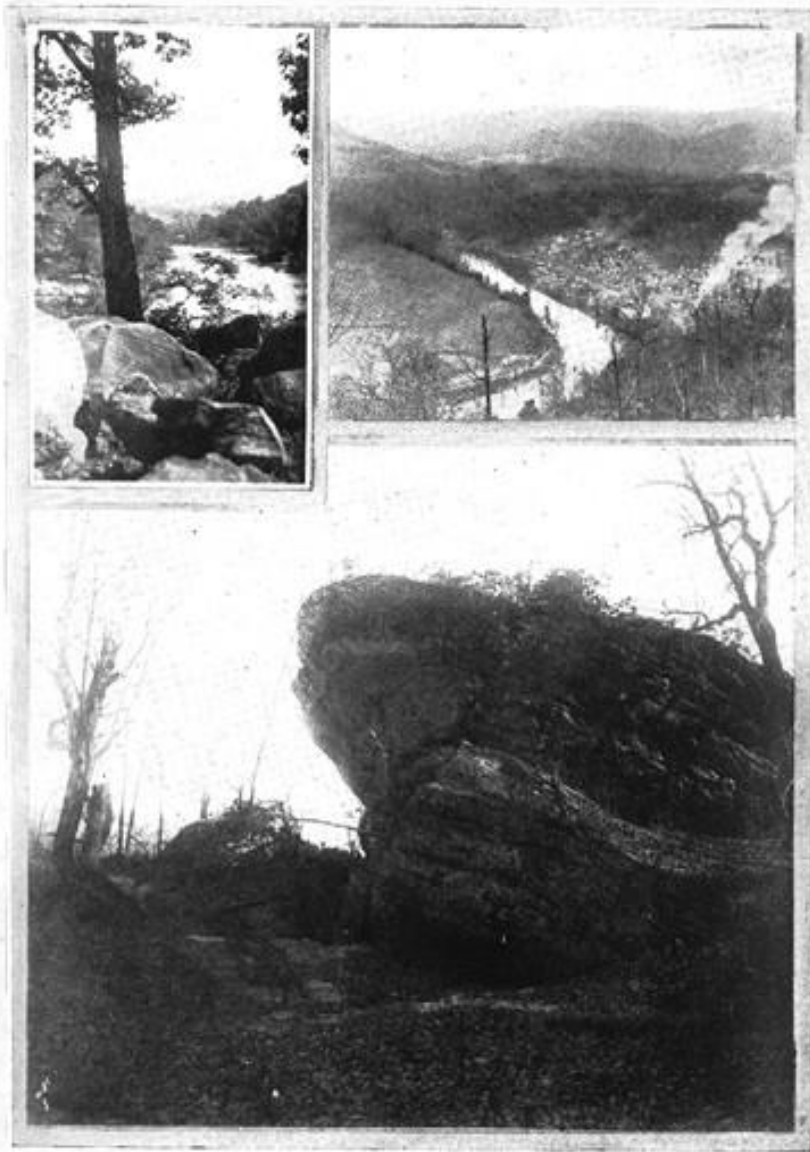
Upper—A Sylvan Scene. Lower—Looking up the Cumberland

THE PINE CONE



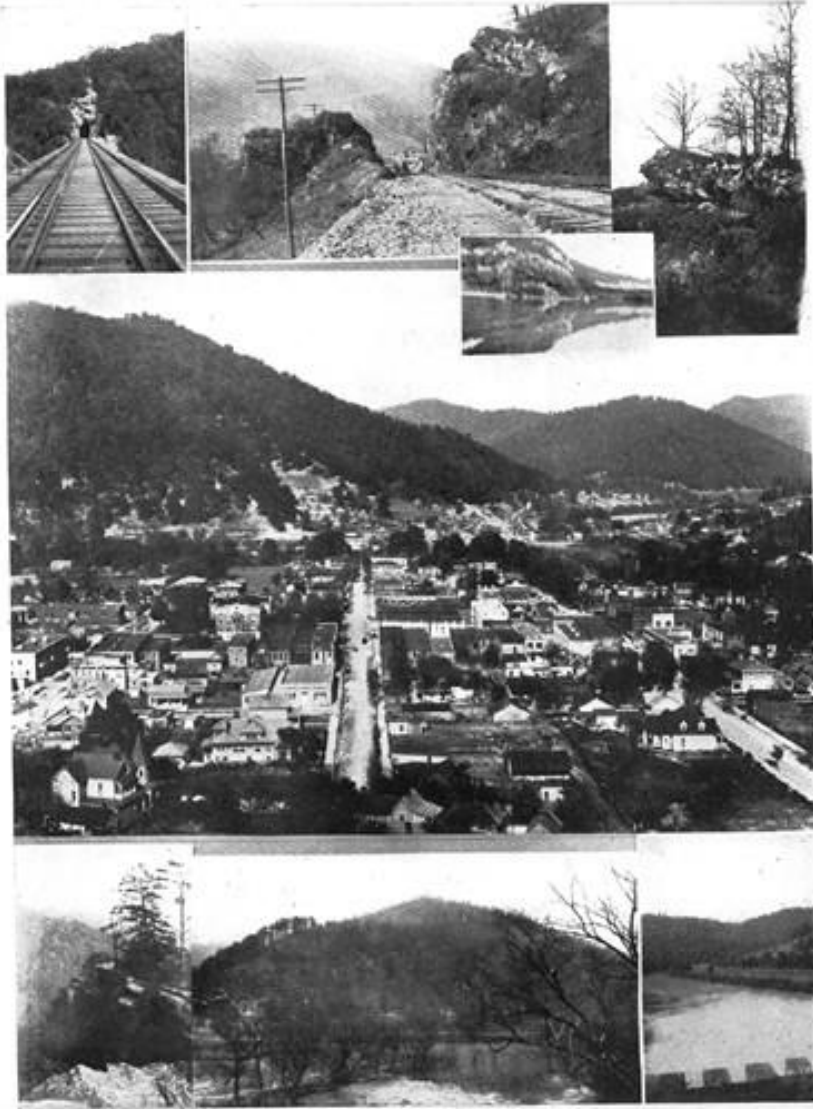
Characteristic Kentucky Mountain Scenes

THE PINE CONE



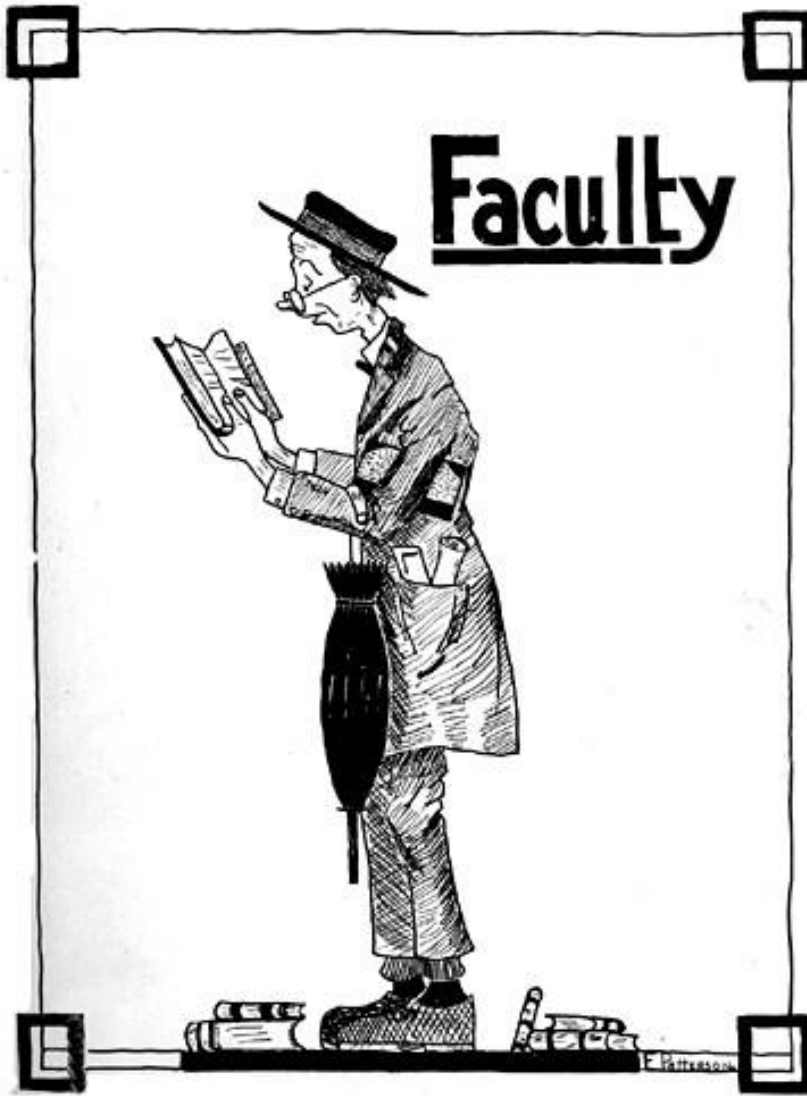
Upper Left—On the River Road. Upper Right—Typical Black Diamond Camp. Lower—Overhanging Rock

THE PINE CONE



In and Around Pineville

THE PINE CONE



THE PINE CONE



Supt. R. H. Shipp

THE PINE CONE

W. F. JONES
B. S.

Principal
Teacher of Mathematics

B. S. Georgetown College 1921; Student University of Chicago 1920; Instructor State Normal Extension Summers 1921-22; Principal and Athletic Director High School 1921-22; Principal 1922-23.

MARY ANN JUSTICE
A. B.

Head Latin Department.

A. B. Agnes Scott College 1921; Community Service work, Linville Falls, N. C. 1921-22; Latin Department Pineville High School 1922-23.

L. C. HENDERSON
M. D.

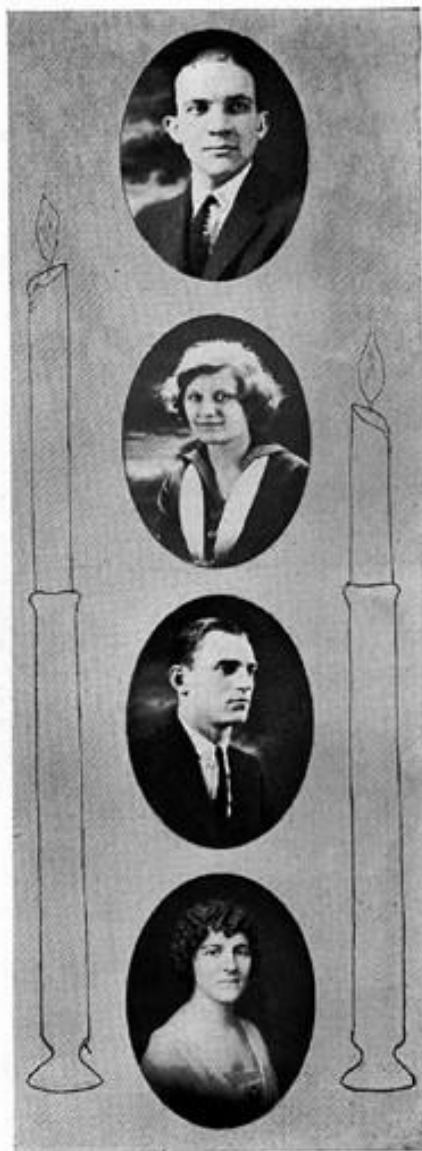
Science and Assistant Athletic Director

University of Mississippi 1922; Instructor of Science and Assistant of Athletics Pineville High School 1922-23; Principal-Elect for 1923-24; Coach Baseball and Basketball Potts Camp High School 1921-22.

ELIZABETH METCALF

Head of English Department

Mayme Johnson Seminary; Graduate of Kentucky College for Women; University of Chicago one term; Normal Extension Course three years; Teacher in grades Louisville Schools 1918-22; Pineville High School 1922-23.



THE PINE CONE



M. W. PETERSON
B. S.

Athletic Director and Teacher of
History

B. S. University of Illinois 1922;
Coach, freshman football University
of Illinois 1921; Assistant coach
freshman varsity basketball 1921-22;
St. Mary's High School basketball
1921-22; Swimming Instructor 1922;
Wrestling and Boxing 1922; Head
Athletics in Unit System; Physical
Education 1921; Athletic Director
Pineville High School 1922-23.

ALVA E. TANDY

Assistant Latin

Princeton College, Princeton, Ky.;
Western Kentucky State Normal,
Bowling Green, Ky.; Peabody Col-
lege, Nashville, Tenn; Teacher Pine-
ville Junior High School 1922-23.

H. C. PUMPHREY

Assistant Mathematics and Science

U. S. Government School, Cape May
1918; Y. M. C. A. night school, Cleve-
land, Ohio 1918; Berea College 1920-
22; Pineville Junior High School
1922-23.

REBECCA RAINES

Lebanon, Tenn.

Graduate Tenn. College for Women;
Sec. to Pres. Castle Heights Military
Academy 1921-22; Sec. to Superin-
tendent of Pineville Public Schools
1922-23.

THE PINE CONE

LOUISE BUCK Music

Howard College, Gallatin, Tenn.;
Student University of Chicago; Grad-
uate College of Music, Cincinnati,
Ohio; Teacher Clinton College one
year; Barbourville schools one year;
Pineville High School 1921-23.

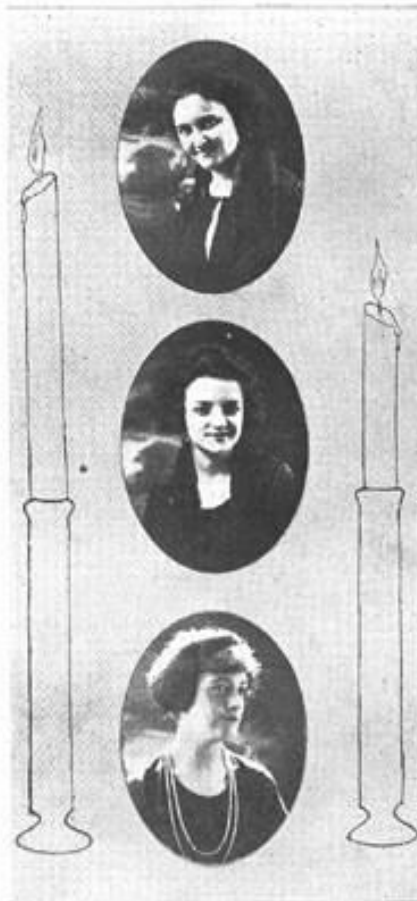
BONNIE JAMES Expression

Meridian College, Meridian, Miss.
1915-17; Graduate Western Kentucky
State Normal; Teacher of expression
Paducah, Kentucky High School 1919-
20; Pineville High School 1920-23.

BERNIE ROSE SIMS

Director Public School Music

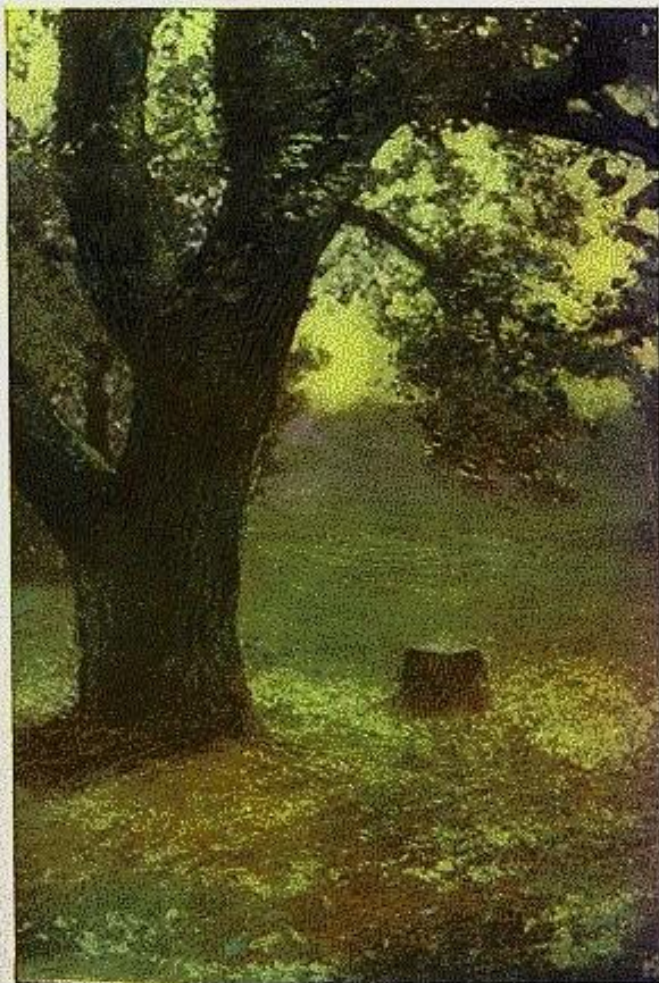
Graduate Princeton, Ky.; Graduate
Western Kentucky State Normal in
Piano and Public School Music; Stu-
dent Peabody College, Nashville,
Tenn., summers of 1921-22; Director
of Public School Music Princeton City
School 1920-21; Sturgis Schools 1921-
22; Pineville City Schools 1922-23.



A Pineville High School Football Game

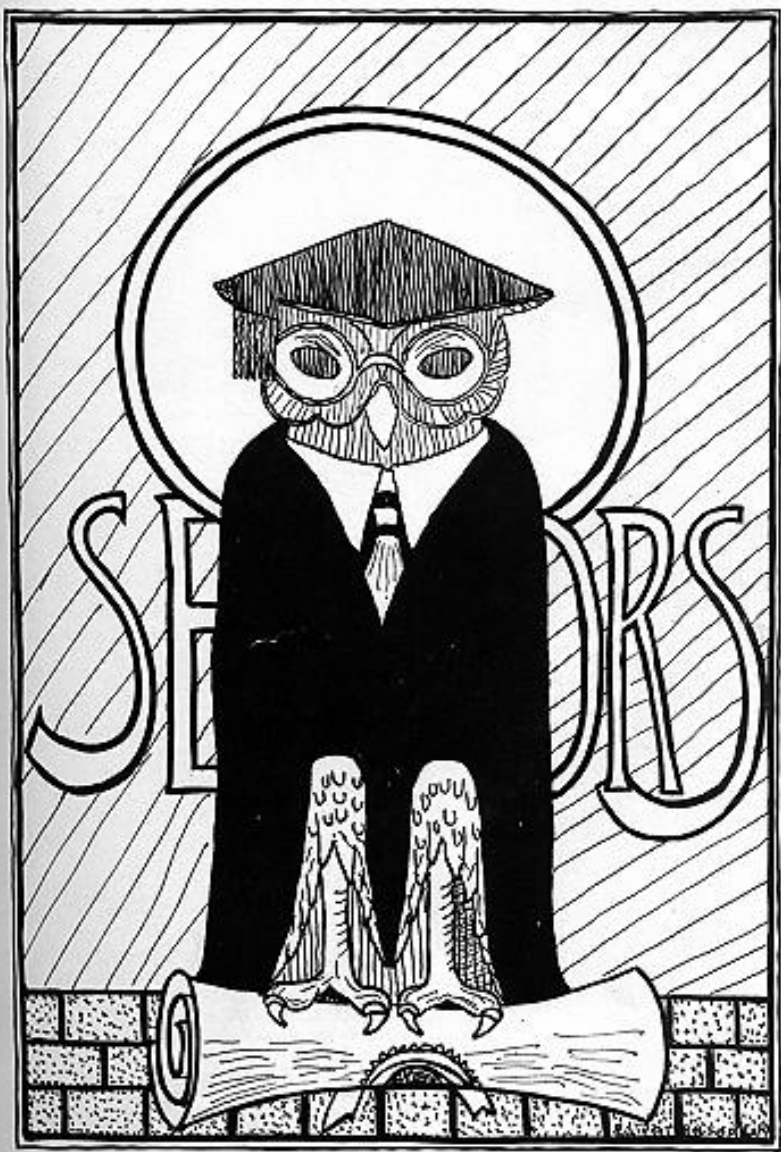
It was an ideal Thanksgiving day, cool and crisp after the recent **Raines**. The team was **Green** but it was not down-hearted as it journeyed to **Boston** to play a game of **Ball**. The journey was made pleasant by the songs of the **Robbins** in the **Wood**. Upon their arrival in **Boston** they saw an incoming **Shipp** which carried such distinguished persons as the **King**, the **Earl**, the **Duke** and the **Vicar** to see the game. At 2:30 the whistle blew and the game was on. By a **Miracle** we scored a touchdown just as we "**Euster**" always do, and the crowd became **Wilder**. The opponents began to complain saying, "It **Sims** to us that they are a bunch of **Crooks** and we expect **Justice**." But our team played the harder and **Helt-on** to the big end of the score. They again accused us falsely and we became angry and said "**C (ome) on-over**." They did, and we struck the **Dean** with a **Stone** and he thought that he had played his last **Card**, but soon he said that he was **Well-(er)**. We decided to go and hastily climbed into our **Jeffries** and shouted "**Home James!**" But the chauffeur said, "**My Will-is** to go, but I **Felt-(s)** for **McKee** and it is gone." He went back into the **Hord** of people where our friend the **Taylor** was playing a **Cornett** and found it in the possession of the **Bowman**. The trip home was uneventful except we **Met (a)** calf and ran over a **Drake** because the driver could not **Se-well**. Arriving home the **Cooke Brought-on** a dish of **Ham**, after making a **Mess-(er)** and trying to "**pass the Buck**," to the **Baker**. Our captain told his **Foster-mother** that she ought to **Patt-er-son** on the back for having passed through such a strenuous day unhurt. We then went to the **Chappell** where we had the **Golden** opportunity of hearing the **Bishop** read from **Samuel** and **Peter-(son)** about **Abraham** and **Isaac**.





C L A S S E S

THE PINE CONE



THE PINE CONE



HERBERT ROLLINS
(Herb)

"He had a head to contrive, a tongue to persuade, and a hand to execute any mischief."
Achievements: Football '20-'21-'22; Basketball '23; Debating Team '22-'23. Cast: "Hoodoo," "Untangling Tony," "Anne What's Her Name," "Much Ado About Betty." Business Manager Maroon and Gold '23; Oratorical '22; Chorus S. K. K. P. S. T. '21-'22; Class President '23.

As big-hearted as he is big. Extremely thoughtful of others except the opposing guard in a football game. Active in all things, clean, ambitious, and talented. We predict a remarkable career for Herb both at Baylor and afterward.

LUCY RICHARDSON GRAGG
(Lucy)

"A rare compound of efficiency, frolic, and fun;

Who relished a joke, and rejoiced in a pun."
Achievements: Expression '21-'22-'23; Pine Cone Staff '22; Financial Committee Pine Cone '23; Class Historian '23; Editor Maroon and Gold '23; Maroon and Gold Staff '22; Literary Society '22; Glee Club '22; Tennis '21; Declamatory '23; Class Poet '23; S. K. K. P. S. T. '21-'22; Class Day Committee '23. Cast: "Hoodoo," "All the World Loves A Lover," "The Spell of the Image," "Anne What's Her Name," "Much Ado About Betty." Senior Play.

Her "pep" is known all through the school. This characteristic with her wonderful personality makes her a welcome participant in any undertaking. Her work in expression is outstanding; as "Angeline" and other characters whom she portrayed, she has made P. H. S. proud of her and her talent.

ABE ISAACS
(Capt. Abe)

"Sometimes I sit and think; other times I just sit."

Achievements: Baseball '21; Football '20-'21-'22; Senior Council '23; Class Treasurer '23; Vice-President Criterion Literary Society; Financial Committee Pine Cone '23; Varsity Club '20-'21-'22. Cast: "Much Ado About Betty."

His excellent playing, his faithfulness to the football team, and his determination to win, has won for him the title of Cap'n Abe. He is loyal to his school, and is that member of the class of '23 that we could not do without. He is sincere, active, dry-witted, and devoted to his friends.

THE PINE CONE

WILLIAM RAY WOOD
(Ray)

"Oh, if I could only grow."

Achievements: Boys' Literary Society; Criterion Literary Society; Older Boys' Conference '20-'21; S. E. K. P. S. T. History '21-'22; English '21; Track Team '21-'22; Baseball Squad '21-'22; Football Squad '20-'21; Varsity '22; Varsity Club '22; Basketball Squad '22; Class Treasurer. Cast: "All the World Loves A Lover."

Small in stature, but large in the affection of his classmates. When we think of Ray, we think of "Stick-to-it-iveness," loyalty and unselfishness. His remarkable patience during the long period of inactivity following his accident in football has won for him the highest respect of the student body, teachers, and friends.

FLORENCE SAMUELS
(Florence)

"Her friends they are many, Her foes are they any?"

Achievements: Class Secretary '21-'22; Sidney Lanier Literary Society '22; Music '21-'22; Expression '21-'22; S. E. K. P. S. T. '21; Declamation and English '22; French, Glee Club, Chorus, Tennis Club '21; Captain Senior Basketball Team '23; Varsity Basketball '23; Maroon and Gold Staff '23; Senior Council '23; Finance Committee Pine Cone '23. Cast: "Untangling Tony," "The Spell of the Image," "Much Ado About Betty," Senior Play '23.

"It's not because you're jolly,
And never a trifle blue,
It's not because your words,
Are never slow and few,
It's not because you're pretty,
Tho' of course we know that's true;
But the reason we all love you,
Is because you're you."

RUSSELL LEE CROOKS
(Russ. or Sid.)

"Happy am I, from care I'm free; Why, aren't they all contented like Me?"

Achievements: Vice-President Class '23; Assistant Art Editor Pine Cone '23; President Criterion Literary Society '22; Football '21-'22; Baseball '22; Varsity Club '21-'22. Cast: "Much Ado About Betty."

Someone said, "define 'laziness' and you have Russ." But, we have all learned that it is just his easy going disposition that we were misjudging. Russ. characterizes his old home town to the letter in that he came to the mountains the possessor of the highest grade of Sterling qualities.



THE PINE CONE



EFFIE ARNETT
(Effie)

"Oh, this learning; What a terrible thing it is."

Achievements: Music '20-'21-'22-'23; Vocal '22-'23; Expression '21-'22-'23; S. E. K. P. S. T. '21-'22. Cast: "Untangling Tony," "The Spell of the Image," "Anne What's Her Name," "Much Ado About Betty," Senior Play, Staff Pine Cone '23; Maroon and Gold Staff '23; Sidney Lanier Literary Society '22; Glee Club '22; Class Giftorian; Senior Council.

Effie's good disposition, common sense, and wit, will always be remembered by the class of '23. Effie is frank, open and independent. She is always loyal to her friends and her school. She has an enthusiasm that lasts throughout anything she attempts.

EDWARD ASHER
(Ed.)

"Never let your studies interfere with your career."

Achievements: Track Team '21; Football '20-'21; Baseball '21-'22; Criterion Literary Society '22; Varsity Club '20-'21; S. E. K. P. S. T. Chorus '21-'22.

There are Eds and other Eds, but when we think of unselfishness, an accommodating spirit, and a happy disposition we think of the Ed. of the Class of '23. We never know when he comes or when he goes, but we can always count on his being there. We wish for him the very best there is in life.

JEANETTE METCALF
(Jeanette)

"True to her work, her word, and her friends."

Achievements: High School Pianist '21-'22; Sidney Lanier Literary Society '21-'22; S. E. K. P. S. T. '21; Algebra, Latin, Piano, Glee Club, Chorus, '22; French, Glee Club, Chorus, Tennis Club '21; Senior Basketball Team '23; Varsity Basketball Team '23; Maroon and Gold Staff '23. Cast: "All the World Loves A Lover," "Much Ado About Betty," Senior Play '23.

Jeanette's very presence in the classroom is an inspiration to her adoring friends. She is full of "pep" and enthusiasm, and is willing at all times to help in the various school activities. Jeanette is very entertaining, and is considered a true pal by all of her companions. It is the sincere hope of the class of '23 that her future life may see the fulfillment of her highest ideals.

THE PINE CONE

GEORGIA WHITTAKER
(Georgia)

"There is nothing more becoming than modest stillness and humility."

Achievements: Glee Club '21-'22; Chorus '20-'21; Expression Class '22; Sidney Lanier Literary Society '22; Chairman Peanut Gallery '20-'21-'22.

Our Georgia is not a state. Hers is an interesting personality with a great deal of humor and a touch of mischief. Mix a good disposition with a charming manner and add just a pinch of "don't care." Stir in slowly a large amount of curiosity. Bake and spread over with an extremely innocent expression and you have Georgia. A dish men folk will like.

HAROLD CARD
(Pat)

"No duty could overtask him."

Achievements: Class President '20-'21-'22; Older Boys' Conference '20-'21; President Criterion Literary Society '23; Football '21-'22; Varsity Club '23; S. E. K. P. S. T. Algebra, English, Debate, History '21; English, Geometry and Chorus '22; Senior Council '23; Editor in Chief Pine Cone '23; Oratorical Contest '22; Debating Club '22-'23; Oratorical Contest '23. Cast: "Untangling Tony," "Anne What's Her Name," "Much Ado About Betty," Senior Play.

Pat is an excellent student and an outstanding figure in all school activities. When there is anything to be done we say, "Let Pat Do It," and settle back assured that it will be done and well done. His habits are taming an unruly forelock, and girls.

LEOMA GREEN
(Leoma)

"She could talk; Ye gods how she could talk."

Achievements: Sidney Lanier Literary Society '21-'22; Girls' Baseball '21-'22; Class Team Basketball '23; S. E. K. P. S. T. Chorus '21-'22. Cast: "Much Ado About Betty," Class Grumbler '23; Critic Peanut Gallery '21-'22-'23.

Leoma is that kind of a person who is easily disgusted with those things which are not rapidly pushed to their conclusion. Because of her unfailing enthusiasm, and good spirit, she will be remembered by us as one to whom we owe many pleasant memories.



THE PINE CONE



SHERLEY SMITH
(Sherley)

"Pure in her aim; and in her temper, mild."
Achievements: S. E. K. P. S. T. Vocal '21-'22; Music '21-'22; Sidney Lanier Literary Society '22; Literary Society '23; Bible Class '22; Glee Club '21-'22-'23; Chorus '21-'22. Cast: "Much Ado About Betty." Class Will '23; Secretary and Treasurer Peanut Gallery '20-'21-'22.

Sherley is always ready to do her part in school or class activities, devoted to her church, a true friend, an ambitious student, loyal to the school, quiet and unassuming. She has an unswerving determination to gain the thing for which she strives.

WAYNE GREENE
(Wayne)

"For him the studious shade, Kind Nature formed."

Achievements: Class Treasurer '19-'22; Criterion Literary Society; S. E. K. P. S. T. '21; History and Caesar, History and Orchestra '22; Debating Club '22; Business Manager Pine Cone '23; Track Team '22; Baseball '21-'22-'23; Football '20-'21-'22; Tennis Club '21; Varsity Club '20-'21-'22. Cast: "Anne What's Her Name."

By his quiet, unassuming manner one would never think this "scutpaw" would be very active in class affairs. Quite to the contrary he can always be relied upon in all things whether it be debating, dramatics, academic work, athletics, or raising money for the Annual. The class wishes for Wayne an active and successful career.

ELIZABETH KELLEMS
(Elizabeth)

"Mirth and seriousness successfully combined."

Achievements: S. E. K. P. S. T. '21-'22; Chorus '22; Sidney Lanier Literary Society '22; Orchestra '21-'22; Literary Society '23; President Glee Club '23; Class Secretary '23; Maroon and Gold Staff '23; Class Basketball '23; Bible Class '23; Art Editor Pine Cone '23; Peanut Gallery '20-'21-'22.

Elizabeth is one of those quiet persons whose presence is never obtrusive, yet who by her very silence makes her presence felt above that of others. Studious, gentle, and optimistic, she will always be remembered by those who have the privilege of her friendship.

THE PINE CONE

Senior Class History

PROLOGUE.

Once upon a time, gentle reader, there was a school. This school was not the little red schoolhouse of literary fame, but a large school of brown brick. Into the portals of this institution there flocked the youth of the land. There they followed the lines of least resistance and were exposed to the intricacies of readin', writin', and 'rithmetic.

The play is a parable of the sea and its characters are disguised as sea folk. It is not a comedy tho' all of the characters are humorous. Nor is the play a tragedy tho' it is filled with the bitter rumblings of battles and disputes. It has no hero; it has no heroine; like Topsy, it "just grew."

Dramatis Personae: Sailors on the Sea of Life.

Act 1. Scene 1. Time: Four years ago.

Soft music; curtain slowly rises. The setting is a sea-coast town. In the background are the turbulent waters of high school life. A dejected bunch of sailors make their entrance. They are an ignorant group and are held under control by the officials supplied by the town board. The plot begins with the attitude of expectancy which these sailors show and is developed throughout the first scene by the arousing of curiosity concerning the fate of the sailors, before the curtain makes its initial descent.

Scene 2. Time: "Knowtime."

There is a burst of triumphant music and the curtain makes a rapid ascent. The setting is the same, but the sea has lost some of its vivid green lights. A dark shadow is seen in the distance and finally over the crest of a wave comes a Shipp. A burst of cheering rings forth and the little band of sailors press eagerly forward, each curious to know what the Shipp is bringing him.

The Shipp anchors for a day and then starts the voyage across the waters of high school life. As it progresses the voyage bids fair to be successful.

There are many outstanding events during the cruise. Once in a while various sailors secure shore-leave and while off duty attend several parties. There is one event which will never be forgotten; namely, the organization of a football team while on the second year of this voyage. The success of this football team was unusual for the first year of its organization. The interest of the sailors in the management of this Shipp has been greatly heightened by this event. The curtain descends.

Scene 3. Time: Sometime.

The curtain rises. The setting is on the same body of water but this time it is a little farther along the coast. The sky is very blue and the waters are quiet and placid. From year to year there has been a change in the management of the Shipp. This year there is a new first mate in the organization. The experienced captain who has had so many years of experience at leading crews over the rocks that threatened to destroy them has retired to an office, less strenuous and now leaves the management to his first mate. This mate is a young man with lots of vigor and he very efficiently fills the vacancy thus left.

The crew, after many and varied experiences, goes to a foreign land for the second voyage. They win in some of the tests to which they are subjected and are joyful because of their victory. They lose in other contests and lose with a spirit such as all good sailors should have. The cruise of the class of '23 in the third year of its high school life comes to an end. The curtain descends.

Scene 4. Time: Pass-time?

The curtain rises to music that has a strain of sweetness and greater quality than that played before. Certain changes increase the efficiency of the system, so that with them and the continued leadership of the captain of the year before, there are no signs of mutiny.

Football holds the prestige of former years and the crew is honored by having the captain of the team chosen from among its members. This captain leads his men ably and displays his unusual determination and ability to great advantage. One of the sailors is forced to leave the crew in the midst of its season because of an injury sustained in action. This injury is very serious and the sailor is prevented from re-joining the crew until near the close of the cruise. He is able, however, to return in time to complete the voyage with the rest of his class. The sailors all get a glimpse of land ahead and the cruise is rapidly approaching its completion. The Shipp lands all of the crew in safety and the voyages of the class of '23 are at an end. Curtain.

THE PINE CONE







Junior Class

Class Officers

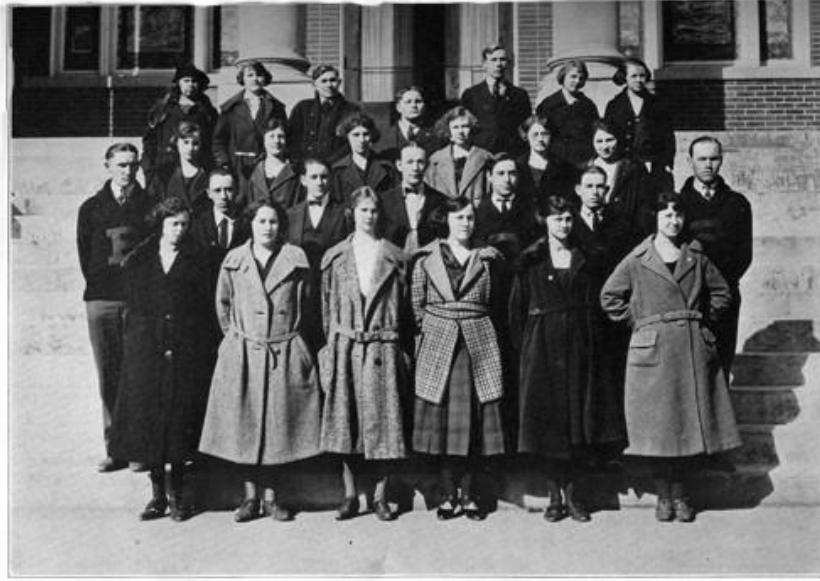
President - - - - - Bernice Vanbever
Vice-President - - - - - Emma Wayne Jeffries
Secretary and Treasurer - - - - - George Asher

Motto: We lead; others follow

Colors: Brown and Gold Flower: Black-Eyed Susan

Class Roll

- | | |
|-------------------|----------------------|
| Asher, George | Jeffries, Emma Wayne |
| Broughton, Maggie | Johnson, Josephine |
| Browning, Anna | Johnson, Ruby |
| Caton, Earl | McDonald, Gladys |
| Cooke, Inez | Messer, Lula |
| Cromer, Mattie | Patterson, Marie |
| Duff, Robert | Powell, Sallie |
| Durham, Fannie | Pursifull, Ola |
| Ebner, Florence | Robbins, Juanita |
| Elliot, Versie | Sewell, Raymond |
| Euster, Abe | Smith, Blanche |
| Gabbard, Renus | Vanbever, Bernice |
| Green, Robert | Vanbever, Earl |
| Hoskins, Charlie | Weller, Brooks |



JUNIOR CLASS

Junior Class History

Upon entering High School in 1920 we absorbed the spirit of P. H. S. which grows stronger with each passing year.

The history of our Freshman year brings back fond memories of hard work and pleasant events. September 1921 found us ready to assume the duties and responsibilities of Sophomores. In our studies we mastered Algebra and worked laboriously through Caesar???. In some of our activities we were successful, winning several medals and prizes in the Tournament of that year. At the end of our Sophomore year we were looking forward with pleasure to entering the Junior year.

We have nearly completed our Junior year, and today the class of 1924 is on the threshold of becoming Seniors—our final goal—for which we have been striving the past three years. We consider our Junior year the most successful one we have passed in High School.

This year the Junior Class took the lead in basketball, being represented by four girls on the varsity team, and winning the championship in the class basketball contests.

Our class was represented on the debating team last year by Marie Patterson and this year by Marie, and Gladys McDonald, both of whom were important factors in our teams' victories in the district contests.





SOPHOMORES

Sophomore Class

Class Officers

President - - - - - Clyde Boston
Secretary - - - - - Edwin Patterson
Treasurer - - - - - Mary Collier

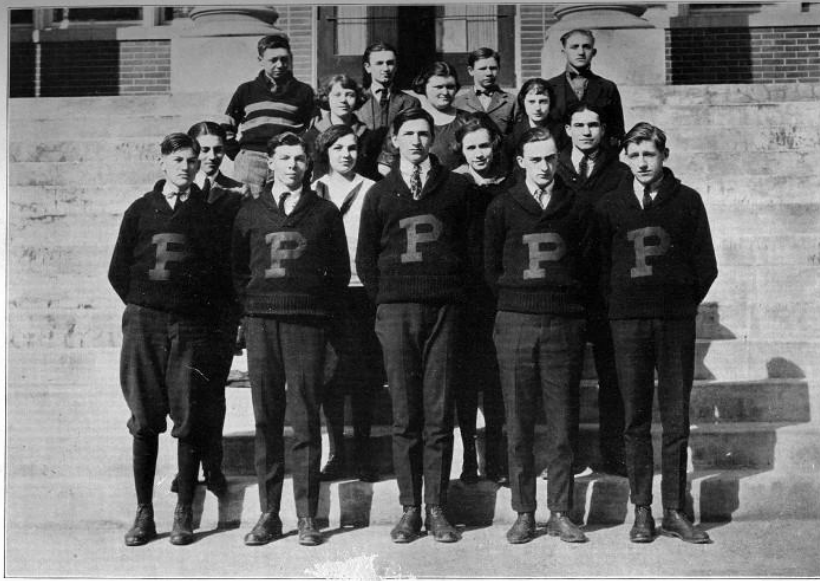
Motto: Day by day in every way we are getting better and better

Colors: Purple and Gold Flower: Rhododendren

Class Roll

Boston, Clyde	Harkness, Ross
Collier, Mary	Holzworth, Ralph
Hendren, Emma	McDonald, Elbert
King, Daisy	Miracle, Clarence
Ramsey, Jane	Patterson, Edwin
Vicars, Eula	Smith, Edward
Carnes, Tom	Smith, Flem
Dean, Edgar	Stucker, Charles
Galloway, Ray	Wilson, Leroy

Griggs, Ray



SOPHOMORE CLASS

THE PINE CONGREGATION

Sophomore Class History

When the Freshman class of 1921-22 marched into chapel, Superintendent Shipp was astonished by the visible brilliancy and worldly wisdom written on the countenances of the supposedly "green freshies." We maintained our brilliancy throughout the whole year. The members of the class, always willing to do anything that was useful, were often called upon by the upper classmen.

As the months rolled by, the Sophomore boys who had been eager to initiate the Freshman boys, were so overawed by the wise appearance and athletic ability of the aforesaid Freshmen that all thoughts of initiation were completely abolished.

Upon entering the Sophomore year, we found that a few of our wiser classmates had become school teachers and to our utter despair we found that a few of our girls were not content with obtaining an education alone, but had continued to diminish our numbers by embarking on the rocky sea of matrimony. At present our class consists of fifteen boys and six girls. In spite of its lack in numbers, the Sophomores are noted for succeeding in the execution of their plans.

Both the boys and girls are noted for their athletic ability. The captain-elect of the football team and the captain of the basketball team are Sophomores. Besides these captains we have contributed six letter men to the football team and one letter man to the basketball team. The girls' varsity basketball team was also honored by one of our class.

We, the class of '25 looking forward into the dim future, determine to give the Seniors of that year the most enjoyable reception a Junior Class ever gave to the Seniors, and later to graduate with the highest honors ever recorded in the history of Pineville High School.

M. J. R.

THE PINE CONE



JUNIOR HIGH

THE PINE CONE

Freshman Class

Class Officers

President - - - - - Roy Gibson
Vice-President - - - - - Ernest Petrey
Secretary-Treasurer - - - - - Clara Mae Thompson

Motto: "Atta Boy; watch us climb"

Colors: Red and Blue

Flower: Red Rose

Class Roll

- List of names: Louise Asher, Nelia Brooks, Goldie Ball, Viola Bird, Mabel Bishop, Mae Broughton, Gertrude Brock, Katie Brown, Carrie Centers, Katherine Davis, Bessie Elliot, Sophia Gilbert, Eva Gragg, Edna Green, Cecil Grace, Cleo Hensley, J. T. Adams, Robert Vanbever, Lillian Hollingsworth, Nannie Murray, Louise Price, Opal Pursifull, Cledith Sewell, Lanta Strunk, Grace Stone, Bernice Taylor, Clara Mae Thompson, Georgia Thompson, Elvia Vanbever, Helen Weller, Jessie Wilson, Louise Wilson, Josephine Wilson, Ruth Williamson, Ware Bowman, Matt. Wilder, James Carnes, Delmas Cawthorne, Charles Dean, David Earl, Charles Foster, Roy Gibson, Finley Goodin, Robert Helton, Harry Howard, Dan Johnson, Clarence Miracle, Ewing Miracle, Ernest Parker, Ernest Petrey, Leonard Slusher, Shelby Taylor, Herbert Turpin, Polk Underwood



FRESHMAN CLASS

Freshman Class History

On September the eleventh, 1922, a band of bashful, but brave Freshies matriculated with the Senior department of Pineville High School. To have seen some of the all-wise Sophomores and Seniors look down upon them through their spectacles of wisdom, a less bold band of soldiers would have turned and fled, but not the Freshman Class of 1922-23. We entered into the battle without hesitation, and now dear reader, please look with me into the past that we may discern some of the accomplishments of the Freshman Class.

In athletics we have proved to Pineville High that she may be justly proud of her Freshmen. As a result of the football season, two of our boys were made letter men. Those boys are David Earl and James Carnes. In basketball the girls, as well as the boys, made a notable showing. Helen Weller made the girls' varsity team. Our class is very proud of this record.

A literary society was organized by us in October. Its programs contained debates and various other departments of literary work.

The majority of the girls in our class are members of the Glee Club and take an active part in its meetings.

As we come to the end of our Freshman year we look back over the past few months with pleasure. When we return next year to resume our unfinished work it will be with even more cheerfulness and efficiency for we will feel less like strangers and more like comrades, each working for his particular success but all laboring for the common good of a class which will long be remembered in Pineville High School.

K. L. D.





THE PINE CONE

EIGHTH A. GRADE

Class History Eighth A. Grade

Choo, Choo, Rah! Rah! Here comes the Eighth A. Grade. We will be Freshmen next year if we pass Madame "Flunk's" door in safety.

We were divided again this year because of our large numbers and in accordance with past happenings this part of the class was made the A. class. The mark A. does not denote scholastic ability but is only a distinguishing mark.

Three members of our class were on the girls' varsity basketball team. They are Muriel Chappell, Mae Hollingsworth and Marie Howard.

We have a literary society named the "Franklin Literary Society." This society has been very active and interesting in its programs.

All of the other classes are talking about graduating from Pineville High School with greater honors than any other preceding class, but watch the Seniors of 1927.

Motto: "United we stand; divided we fall"

Colors: Red and White

Flower: White Rose

Class Roll

Edward Asher
Jack Asher
George Baker
Herbert Brackett
Donald Cawthorne
Ben Hale Golden
Tip Hammons
Edward Hughes
Berry Howard
Ralph Hoskins
Anna Lee Bird
Hazel Byrley
Marie Byrley
Muriel Chappell

Jessamine Durham
Hester Euster
Marie France
Elizabeth Gabbard
Louise Galloway
Hester Green
Maggie Ham
Mae Hollingsworth
Marie Howard
Lena Isaacs
Lucile Kelly
Cassie Smith
Gypsy Wilson



THE PINE CONE

EIGHTH B. GRADE

THE PINE CONE

Class History Eighth B. Grade

We have climbed the educational ladder round by round until we are now on the threshold of high school life. Our hope is to ultimately reach that goal although the many obstacles we are encountering make it rather a difficult undertaking. Our class has organized the O. Henry Literary Society and has elected the following officers.

President - - - - - Mary Kelly
Vice-President - - - - - Oppie Thompson
Secretary - - - - - Ruth Starnes
Treasurer - - - - - Ethel Massingale

Flower: Pansy

Class Roll

Bessie Johnson	Hazel Rhödes
Helen Johnson	Jennie Onkst
Mary Kelly	Jessie Johnson
Ethel Massingale	James Lane
Roberta McDonald	Roma Marshall
Grace Napier	Hayes Page
Margaret Satterfield	Shirley Putnam
Anna Sphar	William Ramsey
Ruth Starnes	Archie Rollins
Oppie Thompson	James Smith
Ethel Woods	Sam Stone
Dora Messer	Max Underwood
Patricia Smith	Andrew France
Edna Cornett	Gerald Pardue
Ethel Helton	John Goodin
Hattie Wilson	James Parker
Ruby McGaffee	Lewis Bingham
Rosa Turner	Vernon Rollins



SEVENTH A. GRADE

THE PINE CONE

Class History Seventh A. Grade

We, the pupils of the Seventh A. Class feel pretty well acquainted; due to the fact that we have been together since we were in the fifth grade. Mrs. Annie Ray was our teacher at that time.

Miss Alva E. Tandy was our teacher in the sixth grade and is now our supervisor and teacher of Literature, History, Geography, and Grammar; our other teachers are Mr. Henderson and Mr. Pumphrey.

While we were in the fifth grade we organized a literary society, and continued the work until the end of the school term. At the beginning of the year 1921-22, we re-organized our society under the name of "Cheerful Workers." Our motto was "Ever Ready," and our colors, Blue and Gold. When school opened for the present term we voted to retain the same motto and colors.

A debating club of nine girls and twelve boys has been organized and we hope that by the time 1927 rolls around our class will be represented on the debating team that will go to Lexington to represent Pineville, that year. We have derived great benefit from our club and we believe that the training will be of great help to us in later life.

Five of our boys were on the midget football team of 1922. We also had a class baseball team last season and the boys on both teams were not defeated.

We hope to successfully pass this term and help to compose the Eighth A. Grade next year.

Class Officers

President	Paul Greene
Vice-President	Adelbert Marting
Secretary-Treasurer	Frances Earl

Motto: "Ever Ready"

Colors: Blue and Gold

Class Roll

Elizabeth Bowman	Paul Greene
Louise Bowman	Leon Hoskins
Bernadine Culton	Robert Hyde
Frances Earl	Oscar Isaacs
Elizabeth Gragg	James Jeffries
Annie Mae Harp	Adelbert Marting
Pearl Johnston	Forster Miracle
Katherine Keith	Edwin Smith
Annie Turner	Paul Strunk
Bertha Wilson	Clyde Vanbever
Faulkner Byrd	Everett Turner
Dean Caton	Jett Bailey
Thomas Foley	James Spurlock



SEVENTH B. GRADE



Class History Seventh B. Grade

After seven years of school work, we find ourselves a little past the half-way mark. But the next half is to be the big one. During the remaining years of our school work we are going to forge ahead and accomplish things.

Mr. H. C. Pumphrey is our supervisor, and teacher of Arithmetic, Geography, and Literature. The teachers of our other classes are Miss Tandy, Miss Raines and Mr. Henderson.

At the beginning of the present school term we organized a literary society with the name Henry Clay. We chose the motto, "Work and Win," and the colors, Blue and White. We made a good start and have been steadily growing stronger since the first of the year. We feel that our society has been a great benefit to us, and has formed an important part of our year's work. Next year we will re-organize and push ahead with even greater success. Our officers are elected for one month only, as this plan gives opportunity to develop and build leadership.

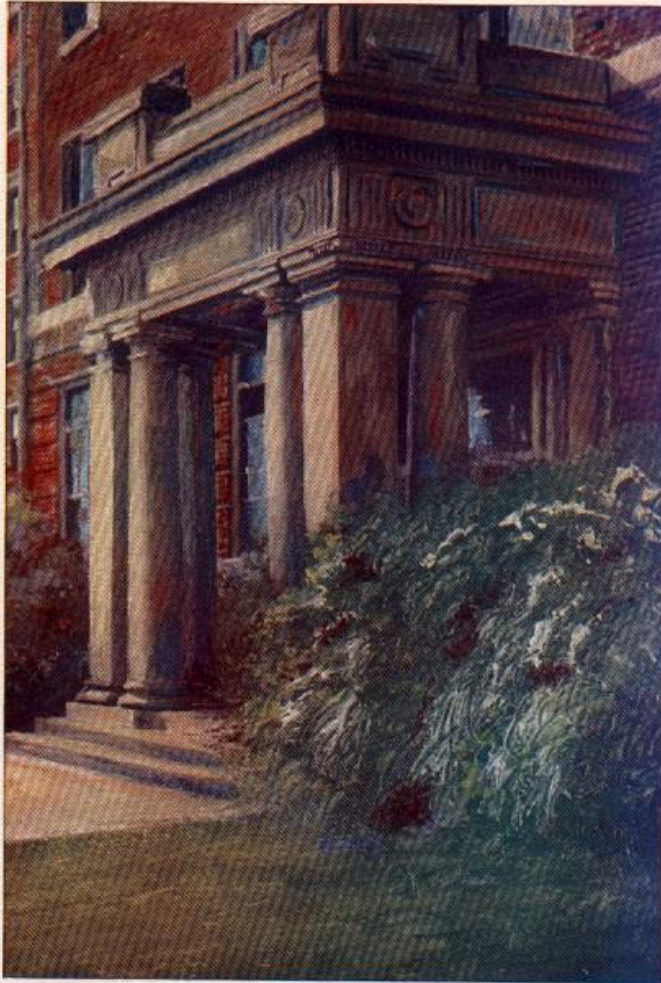
This year clearly proved to us that we have wonderful prospects for future football and basketball stars. During the coming years of High School life we expect to take an active part in athletics.

Motto: "Work and Win"

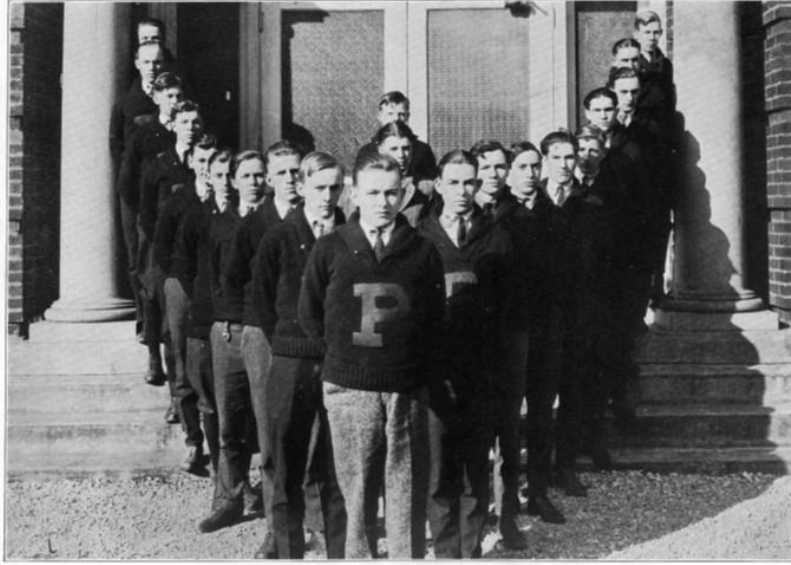
Colors: Blue and White

Class Roll

Myrtle Brackett	Solomon Carnes
Viola Brown	Nelson Durham
Axie Carnes	Russell Elam
Doxie Elliot	Allan Gilbert
Nellie Gilbert	Earl Hammonds
Mabel Hill	Roy Hunter
Mossie Hobbs	Marshall King
Minnie Helton	George Lawson
Goldie Marshall	Morris Scott
Ethel Neal	Ernest Smith
Ruth Ruffy	Nathaniel Smith
Mary Starnes	James Starnes
Ruby Stone	Earl Steely
Margaret Whittaker	Chester Wilson
Virgil Bingham	Edward Wilson
Ray Bowman	



ORGANIZATIONS



Varsity Club

THE PINE CONE



Music Department

The piano department has advanced in several ways during 1922-23. We have added an assistant teacher, another piano, and several new pupils.

Pupils' recitals have been given at regular intervals on Wednesday afternoons, at which the lives of the classic composers have been studied. Programs from Schuman, Mozart, and Beethoven were those which were especially enjoyed.

Parents and visitors are welcome to the larger recitals which are held in May as usual.

The following pupils have been enrolled during the year:

Ethel Asher	America Asher	Gladys McDonald
Rae Asher	Daisy Parker	Muriel Chappell
Varilla Asher	Mary Faulkner	Sarah Moss Phillips
Louise Asher	Alberta Woolum	Marie Patterson
Martha Atkins	Lydia Gilbert	Linda Patterson
Roberta Atkins	Ruby Stone	Mary Bruce Pitman
Marie Byrley	Masie Stone	Burricc Norrod
Margaret Caldwell	Nadine Hodges	Boydie Rice
Genevieve Caldwell	Octavia Hoskins	Florence Ragland Samuels
Nelle Card	Mabel Hoskins	Cassie Smith
Katherine Davis	Beulah Hoil	Frances Starbuck
Neil Dillon	Pearl Hoil	Blanche Smith
Ruby Euster	Lena Isaacs	Mary Vanbever
Hester Euster	Majel Kelly	Ethel Woods
Louise Galloway	Lucile Kelly	Helen Weller

THE PINE CONE



The Band

Until the winter of 1922 there had been no definite action taken toward the organization of a High School band. Many plans had been discussed but as none of these were plausible the idea was abandoned.

However, where there is life and determination something is sure to happen, and as proof of this statement there is now existing in the Pineville school a band which is almost sufficiently qualified to give public programs.

We would not overlook the plan which has enabled us to secure this much needed addition to our school organization. Just as we had given up the idea of having music in the school by a band of our own, the Kentucky Band School of Louisville, came to our aid by offering to furnish the instruments and the instruction at unusually low rates.

The boys have shown a very fine spirit in this matter and have worked hard. At present there are about fifteen members and we sincerely hope that they will be faithful until they have become masters of the art. May our band march out on the gridiron next fall and play, "When Old Pineville High Falls Into Line," thereby giving the football men even a greater inspiration to fight for the glory and honor of their high school.



Debating Club

The beginning of the present school year found only four members of the Maroon and Gold Debating Club still in school. Three of these members had participated in the inter-school debates of the previous year, and these with the other member and two new ones made possible the organization of two debating teams to represent Pineville High in the Southeastern Kentucky Debating Tournament.

The subject for debate this year is, Resolved: "That the four-fold optional plan of adjusted compensation as offered by the American Legion should be granted to our soldiers of the World War by the next Congress."

The preliminary debates were held in the same manner as last year and, as formerly happened, Pineville won both sides of the argument, by defeating the Union College affirmative team at Barbourville and the Sue Bennett Memorial School negative team at Pineville.

One more contest remains to be held between the Pineville team and the winner of the Sue Bennett-Union contest. It is the sincere hope of the Maroon and Gold Debating Club that Pineville will represent Southeastern Kentucky in the State Tournament and thereby stimulate an interest in debating which heretofore has been so sadly lacking in this part of the state.

Expression Department

Expression may be broadly defined as the art of conveying thought. Expression has an especial part in the development of the whole man. In this art thoughts, the motions and purposes form the contents of the selection, while the body and voice present the form.

There are two general branches of expression: Reading, and public speaking. By the first we mean the expression of the thoughts of others taken from the printed page; by the second the expression of one's own thoughts.

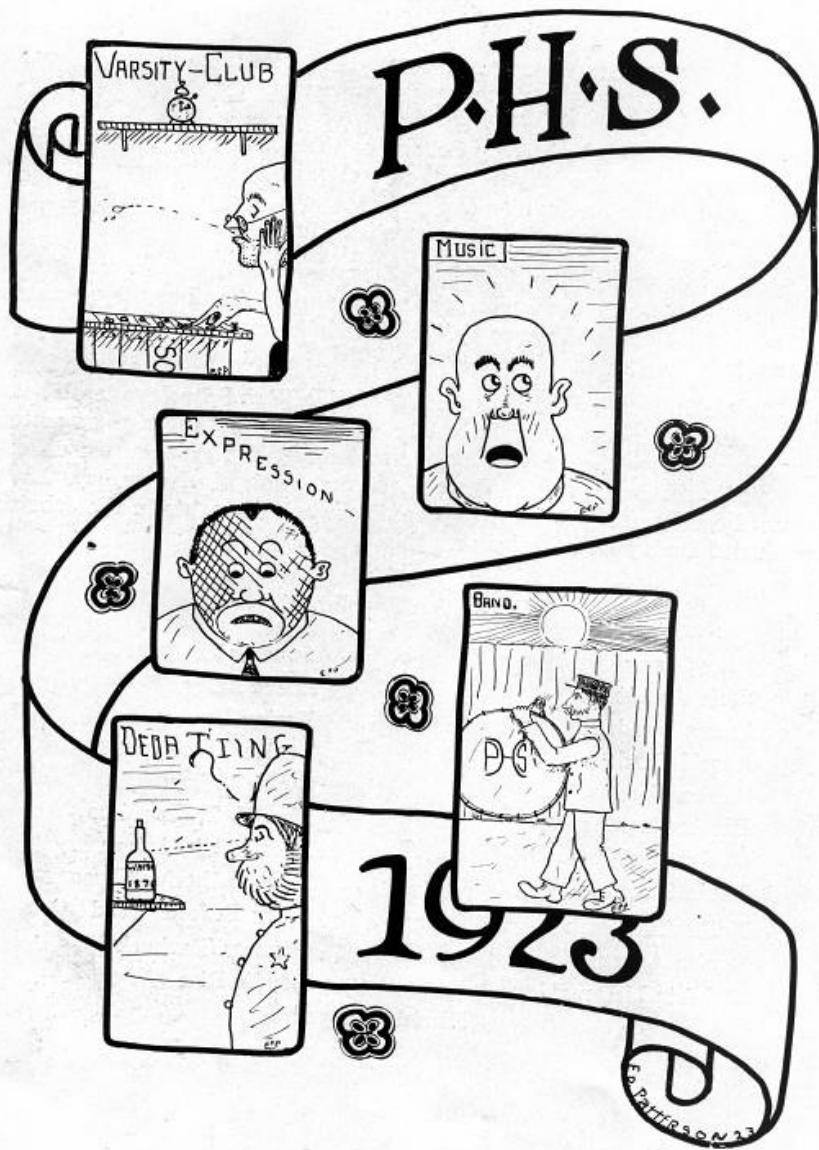
In the Expression Department of Pineville High School we teach both branches. We learn to give the thoughts of others in the plays presented by the expression class from time to time, in readings given at the different public meetings, and in the oratorical contest which our boys have entered each year. We learn to present our own thoughts in the debates conducted during the school year.

Expression Enrollment

Lucy Gragg	Anna Sphar
Effie Arnett	Lucile Kelly
Emma Hendren	Hester Euster
Harold Card	Louise Galloway
William Hunter	Gypsy Wilson
Herbert Rollins	Mrs. K. T. Cornelius
Gladys McDonald	Miss Nettie Arterberry
Lanta Strunk	Miss Katherine Ewen
Katherine Davis	Mary Buford Wood
Louise Asher	Frances Starbuck
Roberta McDonald	Boydie Rice

Muriel Chappell

THE PINE CONE



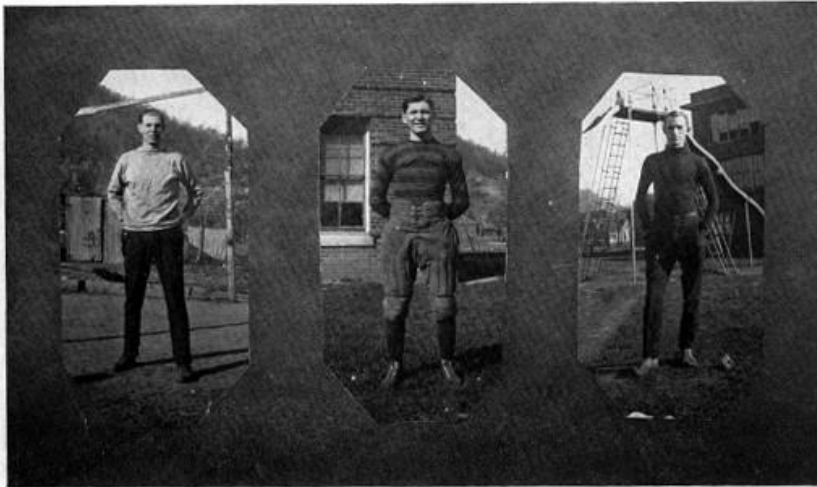


ATHLETICS



MOUNTAINEERS 1922

THE PINE CONE



M. W. PETERSON, Athletic Director

Mr. Peterson came to Pineville last fall after his graduation from the University of Illinois the previous June. His methods of coaching the football team are the most modern and the most approved. His adoption of the Illinois system of coaching meant greater success in athletics than P. H. S. had ever had before. Mr. Peterson will be with us again next year and we are confident that under his supervision our athletics will continue to be clean and successful.

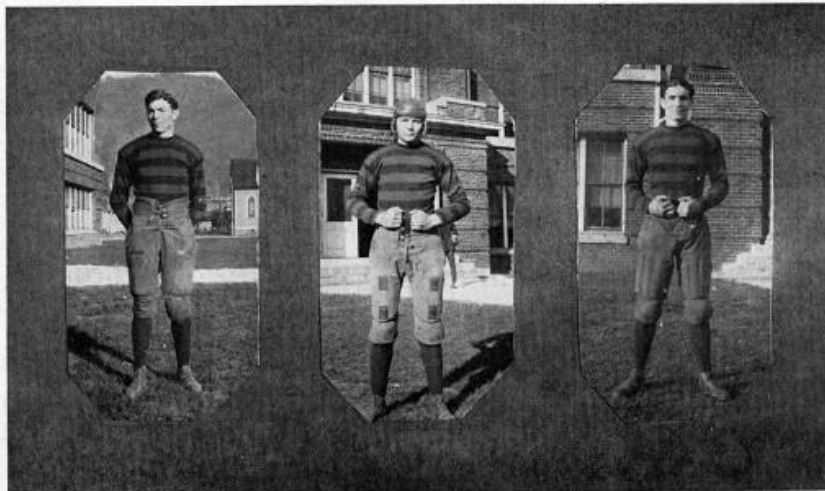
ABE ISAACS, Captain; Center
(Abe)

Fight, a nose for the ball, and an accurate eye for passing made Abe almost indispensable to the team and one of the best high school centers in Kentucky. Although handicapped throughout the last season with a shoulder that would have kept most men on the sidelines Abe always displayed the same drive which he has always shown in the three years he played on P. H. S.' varsity team. We lose a pivot man who would be valuable to any team when Abe graduates in May.

L. C. HENDERSON, Assistant Director Athletics

Mr. Henderson is a graduate of the University of Mississippi, where he played two years of varsity football and baseball and four years of college basketball. He was captain of the basketball team the last year he was in college. Because of his wide experience he was as able an assistant to Mr. Peterson as could be found anywhere. Mr. Henderson had charge of the scrub football team and his work developed more fight and a greater knowledge of football than the squad had ever had before.

THE PINE CONE



**CLARENCE MIRACLE, Captain-elect; Fullback
(Mike)**

Fortunate is the man who will not stop until he finds himself. Mike played every position from both ends to center and finally decided to "take it over" himself. With indescribable innate ability and a coach who could direct this ability, he proved to be one of the most valuable men on the team. At the fullback position he kept up the standard set by the "Old Guard." We are expecting Mike to lead the team to victory in 1923.

**HERBERT ROLLINS, Guard
(Herb.)**

"Herb." was the signal when the play was coming through the line. An opening could always be found opposite his man. Herbert is a two year letter man and the future teams will miss his interference as he graduates this year.

**THOMAS CARNES, End
(Tom)**

When we think of a forward pass we think of Tom, for it seemed as if he simply could not miss one and once he caught one he was sure to make a valuable gain. Tom is all ready for the 1923 season as his two years of experience should make him even more valuable to the team.

THE PINE CONE



ELBERT McDONALD, Halfback
(Duke)

"Duke" had a mean way of going where he was not looking. His work at running back punts, his broken field running, and his ability to reverse field on end runs and plays from punt formation made him one of the most dependable ground gainers that the team possessed.

GEORGE ASHER, Halfback
(George)

George has an uncanny ability for placing himself where he can intercept his opponent's forward passes. His kicking, passing or running with the ball make him invaluable to the team as a triple threat man. George has one more year to wear the Maroon and Gold.

FLEM SMITH, End
(Flem)

Flem, although handicapped by size, played with the determination to win a letter. By his willingness to take coaching he gained enough football knowledge to place himself on the regular team. Flem's defensive playing was not surpassed by any member of the team.

THE PINE CONE



WAYNE GREENE, Guard
(Greene)

Characterized by good blocking and the ability to sneak through the line on defense, Wayne played a brand of ball that made observers of line play take notice. Wayne had rivals for his position on the team who out-weighted him but his fighting spirit and former experience made him always the logical man to play the guard position. We wish for him as he graduates that he may always display the same spirit in life's duties that he did in football.

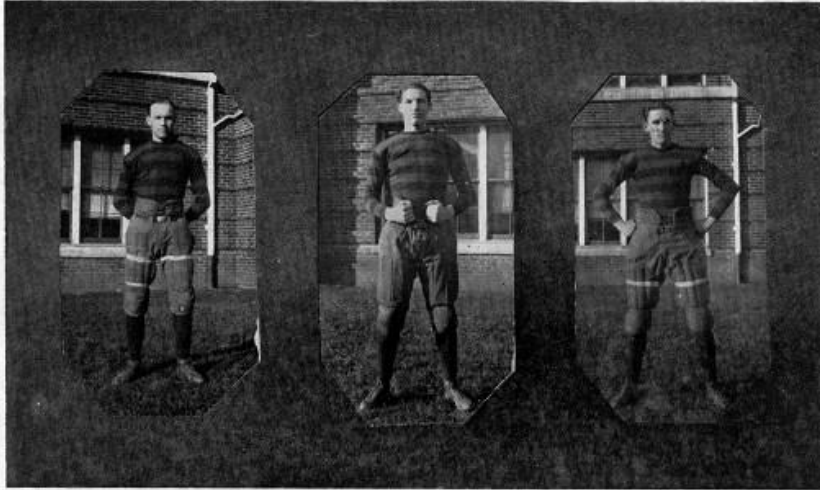
LEROY WILSON, Tackle
(Kettle Island or Big Boy)

This was "Big Boy's" first year in football, but that did not prevent him from being a star on defense once he had received the proper coaching. "Big Boy" is a Sophomore and it is the earnest hope of all Pineville fans that he will return to P. H. S. for the remaining years of his high school education.

EDWARD SMITH, Halfback
(Ed)

Ed was probably the best man on the team at blocking. When an opposing end was to be "taken out" Ed saw that it was done. He was unable to finish the season because of an injured leg, but he will be in high school two more years, which we hope will be more fortunate for him in his athletic work.

THE PINE CONE



RENUS GABBARD, Guard
(Uncle Remus)

Renus did not find himself until near the close of the season, but when he once started, nothing stopped him until he had made his letter. He was a good man for running interference from guard position and his tackling was deadly. Renus still has another year on the team.

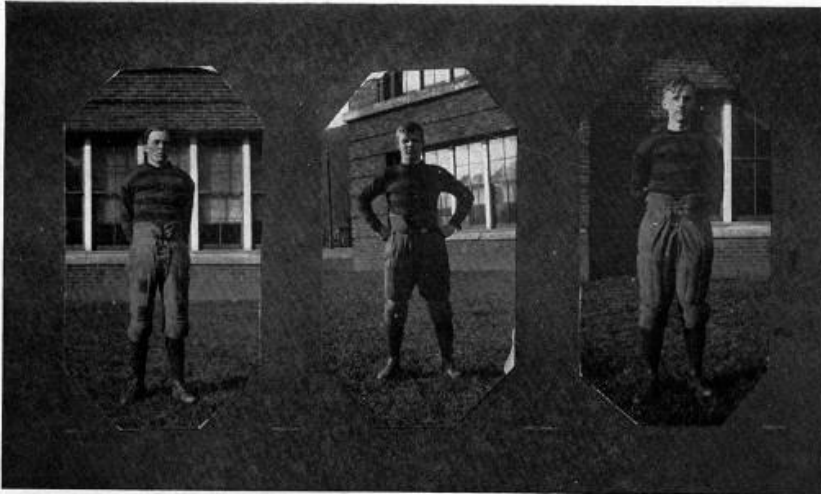
JAMES CARNES, Tackle
(Jim)

Jim was a man who was feared by all opponents because he used that low, hard, never-falling drive in all of his tackling. Jim absorbs coaching very readily and is sure to place his name in the football records of P. H. S. in his three remaining years of high school.

CHARLES HOSKINS, End
(Charlie Hoss)

Charlie made a good end because of his ability to kick and his ground covering qualities. Very few gains were made around him on end runs. Charlie still has another year and, needless to say, he will be one of the team's most dependable men next season.

THE PINE CONE



RUSSELL CROOKS, Halfback
(Russ)

Russ was handicapped throughout the season because of an injury received playing baseball last summer. However, handicaps fail to daunt Pineville High School spirit and Russ was always on the scene to fight it out with the toughest of opponents. His ability to follow interference was unusual and his drop-kicking made people think that his eyes are in the toe of his shoe. We are sorry to lose him in this year's graduating class.

DAVID EARL, Quarterback
(Dave)

The baby of the team. Sawed off, crammed down, and pressed together, he played the type of football that caused the fans to exclaim "Pig-iron!" Dave led the team with the ability of an experienced quarterback and was immune to injury. He should develop into a good player in the three years he has left at P. H. S.

PAT CARD, Guard
(Pat)

If size determined football ability Pat would have been mascot, maybe. However, it does not and Pat possessed every other football quality. He came into the limelight in his senior year after working faithfully the two preceding years. They never got too big for Pat to tackle with every ounce he had in him.

THE PINE CONE



RAY WOOD, Quarterback
(Ray)

Ray worked like a Trojan for two years, made the team in his third, only to suffer serious injury in the third game of the season. Ray's spirit on the field was of the very highest calibre and showed itself even more during the five months following his accident when he was confined to his room. The class of '23 is proud of him because of his sacrifice and the example he set which will serve as an inspiration to our future football heroes. We wish for Ray as he graduates that he may be successful in greater things than football.

THE PINE CONE



NORTH SIDE OF OUR STADIUM



A LINE PLUNGE



BEFORE THE GAME



A FEW SPECTATORS



"THE MOUNT accepts"



ONE OF THE VANQUISHED



CHARLIE PUTS ONE OVER



AN ANGLE PLAY



McDONALD OFF FOR A GAIN



MIXING IT WITH THE "STANFORD DAIRYMEN."

SOME FOOTBALL PICTURES

Football Season 1922

The 1922 football season was without doubt the most successful in Pineville High's athletic history. The fighting Mountaineers piled up a total score of 288 points to their opponents' 60, which is indeed a record for future gridiron warriors wearing the Maroon and Gold to strive for.

The success of the season was due to the whole-hearted co-operation of the players and the fighting spirit for which Pineville's teams are noted. There was no outstanding star as each player was a star in himself.

The pre-season dope was anything but encouraging as the scoring machine of the previous season was seriously crippled by graduation. Regardless of that fact the season started with a rush and Union College was the first victim. This victory was followed by the downfall of the Lebanon Junction team on the following Saturday. The next game was with Harlan and was the sore spot of the whole season as Pineville fell before the onslaught of the supposedly high school team. It was in this game that Ray Wood suffered a broken leg after playing the best game of his career.

The game for the following Saturday was canceled so the challenge of the All-Stars was accepted and the tide of victory was again turned to P. H. S. The Stanford game which followed this was the best of the season and P. H. S. redeemed herself for the defeat at the hands of the Harlan aggregation. Mike Miracle played backfield for the first time in this game and from then on was a source of continual worry to the opposing teams.

The game with the Clark County High School resembled a basketball game. Clark County High exhibited the best forward passing system seen during the season. Pineville was not familiar with this method of attack but solved it in time to win the game.

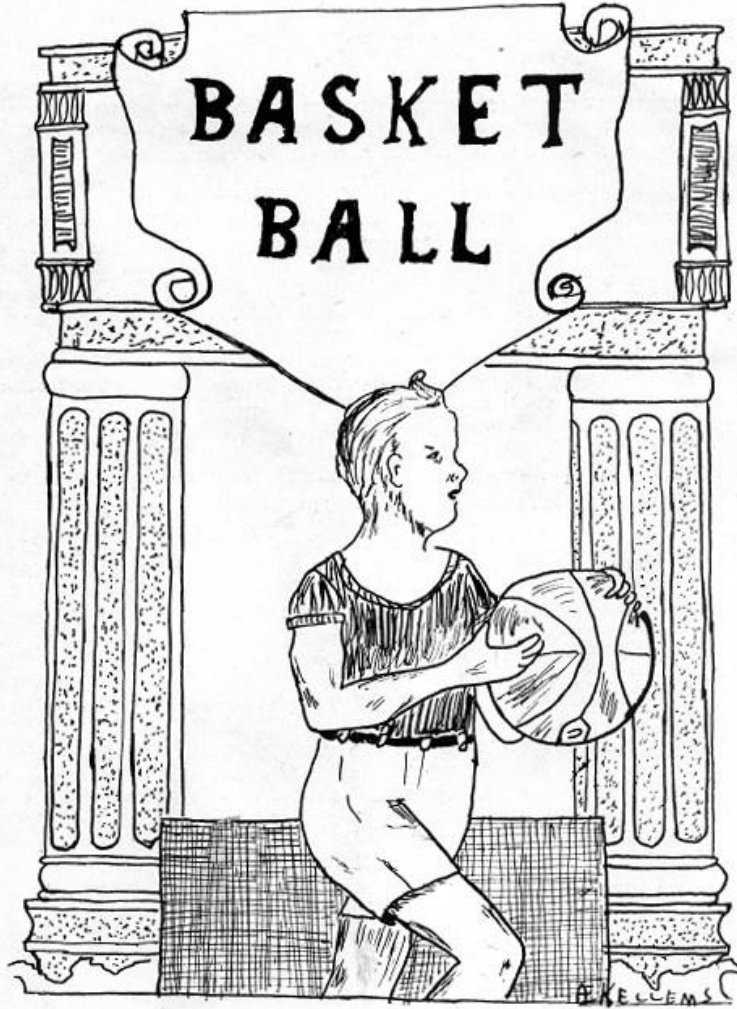
The game with Danville on the following Friday was a hard one because of the poor condition of the players, but P. H. S. continued her long winning streak after numerous substitutions had been made.

The heavy team from Richmond merely slowed up the Pineville team and they were handed the worst defeat in their history according to their coach.

The final game of the season was with Middlesboro and was very bitterly contested especially after the Yellow Jackets had made their lone touchdown. This made the Mountaineers even more determined to win and they succeeded in running up the score on their old rivals.

Summary of the season's scores:

Union College 0	P. H. S. 38
Lebanon Jct. 0	P. H. S. 33
Harlan 20	P. H. S. 0
All-Stars 0	P. H. S. 20
Stanford 0	P. H. S. 26
Clark County H. S. 26	P. H. S. 57
Danville 7	P. H. S. 19
Richmond 0	P. H. S. 54
Middlesboro 7	P. H. S. 41
Totals	288
60	288



Basketball Season 1923

The basketball season was a miserable failure in respect to the number of games won, but considering the fact that the game was entirely new to the players, P. H. S. should be proud of the team.

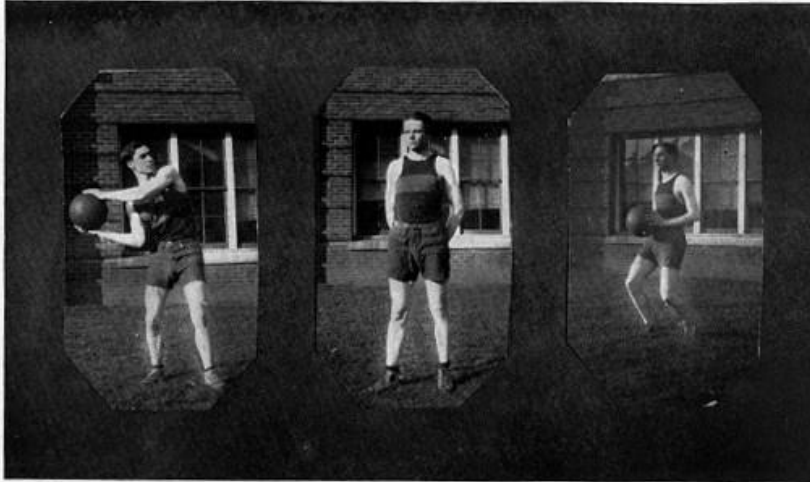
The first games of the season with Manchester and Williamsburg were easy for the opposing teams, but as the season progressed the scores became closer and the games more interesting. Experience was what most of the players needed and although the old fighting spirit was in evidence it was of no advantage in a game of skill such as basketball. The greatest fault of the team was the lack of endurance and victory was in reach several times but was lost because of this fault. The Pineville team often led their opponents in the number of points scored in the first half but were unable to come back with the necessary punch to maintain its advantage.

The playing of the team at the district tournament at Barbourville was a distinct surprise and the P. H. S. players displayed some good basketball ability. Brodhead was defeated in the afternoon, but Williamsburg administered defeat to P. H. S. after a hard fought game. Jim Carnes was the star of the team and his guarding was one of the bright spots of the season. Weller starred because of his free-throwing ability and Tom Carnes was aggressive throughout.

The season's scores were:

Manchester 22	P. H. S. 5
Williamsburg 22	P. H. S. 6
L. M. U. 22	P. H. S. 12
Middlesboro 19	P. H. S. 13
Rose Hill (Va) 14	P. H. S. 13
Middlesboro 24	P. H. S. 17
Barbourville 18	P. H. S. 16
Brodhead 17	P. H. S. 22
Williamsburg 21	P. H. S. 16

THE PINE CONE



TOM CARNES, Captain
Guard

Tom had played basketball before and was the only man on the team who had. Tom was always in the very thickest part of the fray fighting hard for victory although it seldom came. His guarding was good and his pivoting and other floor work was above the average.

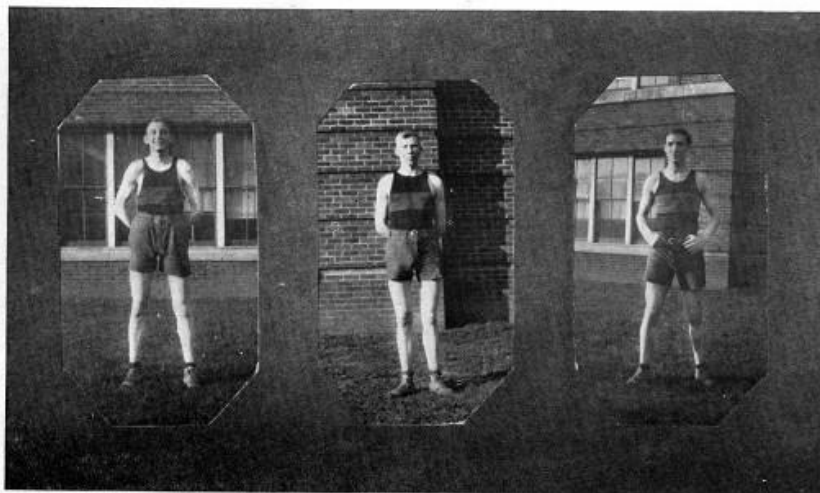
BROOKS WELLER
Center

Weller was noted for his free-throwing ability. He was the tallest man on the team and was naturally placed at center. His free-throwing and shooting of field goals often constituted the greater part of Pineville's score.

GEORGE ASHER
Forward

George played the floor well and seemed to have an eye that had had much training at locating the basket. George could use the one hand shot to better advantage than any other man on the team.

THE PINE CONE



ROY GIBSON
Forward

Roy was another member of the team who could successfully cage a shot from almost any angle on the floor. Roy kept cool, was fast at getting down the floor and played a very good brand of basketball despite his lack of experience.

HERBERT ROLLINS
Forward

Because of his size Rollins could always be depended upon to more than cover his man on defense. On offense he was always scoring on goals pitched from the center of the floor. He seldom used the side-line shot and because of this he had to use the one hand shot. His passing was rapid and accurate. We lose him this year by graduation.

JAMES CARNES
Standing Guard

Jim had never played basketball before this season, but he guarded so well that only the expert could have told that he was a novice at the game. Jim had more fight in him than any other man on the team and though he never had any chance to throw a goal because of his position, he made scoring by the other team exceptionally hard.

Girls' Basketball 1923

Early in the fall the girls became interested in basketball and began to learn the rudiments of the game on a court back of the school building. Before the football season was over Coaches Henderson and Peterson did not have much time to give to the development of this sport for the girls. During this time Miss Justice and Mr. Jones were very kind in helping the girls in the early part of their work.

Later four class teams were organized to create a keen rivalry among the girls and to furnish practice games for those who were likely to make the varsity team. These teams were the Seniors, Juniors, Freshmen and Eighth Grade teams. There was not enough girls to make the organization of a Sophomore team practical, so the Senior and Sophomore girls were placed on the Senior team.

The games played by the class teams were very exciting although the Junior team was easily the best as a look at the scores will show. The Juniors won the class championship and are still wondering what the prize for the victory consists of as they have not yet received it.

The High School team was picked from the class teams by each of the coaches making a list of the players whom he considered better than the others. The girls receiving the majority of such votes were then placed on the varsity squad which consisted of ten players.

This year was the first year that the girls had been offered an opportunity to display their skill and they are eagerly looking forward to next year's season.



THE PINE CONE



VARSITY TEAM
UNION COLLEGE 31
P.H.S. 3



FRESHMEN WON 0
LOST 3



SENIORS
WON 1
LOST 1



EIGHTH GRADE
WON 1
LOST 1

GIRLS CLASS
BASKETBALL
TEAMS



CHAMPION JUNIORS
WON 3 LOST 0

RESULTS:

JUNIORS 9 EIGHTH-7
SENIORS-20 FRESH-1
JUNIORS-5 SENIORS-4
EIGHTH-8 FRESH-5
JUNIORS-11 FRESH-4



Baseball 1922

The baseball season for 1922 might have been better, however, we have no complaint to make on that line. There were no Ty Cobbs, Babe Ruths, nor barefooted Joe Jacksons on the team, but we did have some good material which would have developed into a good team had there been more time than the short season afforded. The spirit of the team was the same one that has always manifested itself in the high school teams of this town. Win or lose, they played and played hard. With cool-headed Frank Caton as captain and others like Shipp, Brandenburg, Griggs, Strunk, Carnes, Crooks, Asher and Greene to give him the proper support the team exhibited a brand of ball that would appeal to any lover of the great national game. Though we lost in the Tournament there was no alibi offered other than it is our usual custom to say, "May the best team win."

The games played and the results were as follows:

B. B. I.	3	P. H. S. . . .	7
L. M. U.	5	P. H. S. . . .	4
Union College	12	P. H. S. . . .	2
Knoxville Central High . . .	6	P. H. S. . . .	2
Harlan	3	P. H. S. . . .	10
	(At Pineville)		
Harlan	6	P. H. S. . . .	4*
	(At Harlan)		

*—Game called in fifth inning because of rain.



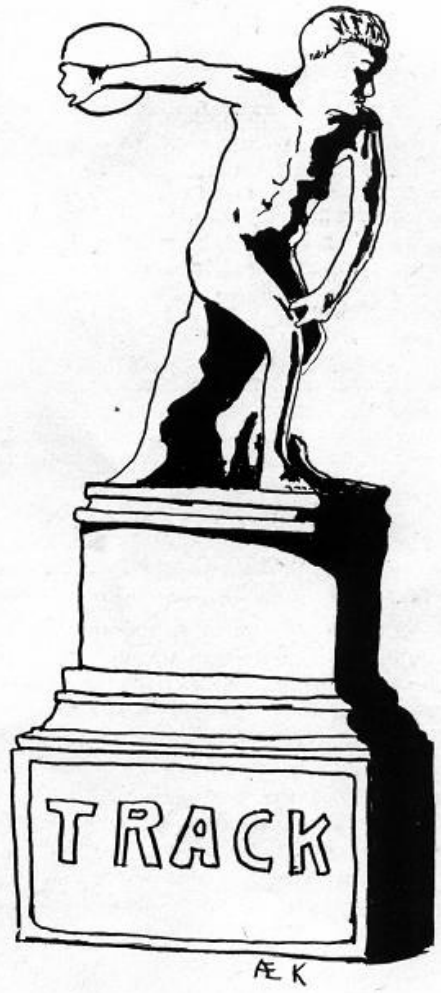
THE PINE CONE

THE PINE CONE



Three years ago when football was first started in Pineville there was a great need of money to get the necessary equipment. The business men of Pineville were not asleep to the possibilities of a successful football team in P. H. S., and immediately organized themselves into the Pineville Athletic Association with the purpose of sponsoring all forms of high school athletics. The next year when more money was needed for the season the organization decided to sell medals, like the one pictured above, for \$100 each to raise the money. This plan was used again this year in connection with others and the membership of the Association has grown from a few to many members. The Association has been behind the school ever since it was organized and there has not been a need no matter how expensive that has not been furnished by these benefactors. With such a splendid organization and the school spirit which has always been typical of P. H. S., our future athletes need worry very little as to the possibilities of success except as it lies in themselves.

THE PINE CONE



Track Season 1922

Track to Pineville High School is almost spelled with the letters d-i-s-c-u-s, for with Asher Brandenburg's enviable state record for the discus throw to our credit we feel that we have gotten about all that is coming to us. Brandenburg's record throw of 113 feet was made at the state meet in 1922. This distance was greater than his previous record throw by eight and one half feet.

Our track squad as a whole did exceptionally good work, as the results of the district tournament show. There were five schools entered in the tournament and Pineville scored more points than the rest of the schools put together. We captured every first place except in the pole vault, high jump, and relay, and in these events we took second place. The boys were willing to undergo the necessary training and worked as hard as could be expected considering their incentive.

Results of the State Interscholastic Track Meet:

Discus throw—Brandenburg 1st., record holder, 113 feet.

Broad jump—Brandenburg 2nd., 20 feet, 2 inches.

Total points, eight. Sixth place in State Meet.

Results S. E. K. P. S. T. 1922

100 yard dash—Pineville High School 1st. and 2nd.

220 yard dash—Pineville High School 1st. and 2nd.

440 yard dash—Pineville High School 1st. and 2nd.

880 yard dash—Pineville High School 1st. and 2nd.

Mile relay—Middlesboro 1st.; Pineville High School 2nd.

Broad Jump—Pineville High School 1st. and 2nd.

High Jump—Middlesboro 1st; Pineville High School 2nd. and 3rd.

Pole Vault—Harlan 1st.; Pineville High School 2nd.

Discus—Pineville High School 1st. and 3rd.

Shot Put—Pineville High School 1st. and 3rd.

Javelin—Pineville High School 1st. and 3rd.

Girls' Events


50 yard dash—Pineville High School 1st. and 3rd.

Baseball Throw—Pineville High School 1st. and 3rd.


Total points scored: Pineville 71. Opponents 45.

THE PINE CONE


AT HIGH SCHOOL TRACK MEET LEXINGTON MAY 22




OVER THE TOP




BRANDENBURG TAKES SECOND PLACE IN RUNNING BROADJUMP




OUT IN FRONT




GET SET!




CLEARING THE BAR




WE'RE GOING OVER




CROSSING THE TAPE




COMING!



BRANDENBURG SETS RECORD FOR DISCUS 20 TIME DIST 113'



?



DOWN THE HOME STRETCH

S. E. K. P. S. T. '22

S. E. K. P. S. T. might mean almost anything to the stranger in this part of the state. But, to all who are acquainted with, and interested in school affairs and activities, it means very much indeed. The Southeastern Kentucky Public School Tournament was organized in 1921 for the purpose of creating a keen, friendly rivalry among the various schools of Southeastern Ky. It included scholastics, music, declamation, home economics, and athletics. The first tournament was held in Pineville in 1921, and was successful considering the fact that the plan was in its infancy. In 1922 it became Middlesboro's turn and the Middlesboro people deserve a great deal of gratitude on the part of the representatives of the other towns, for their hospitality. They showed the visitors every possible courtesy and were absolutely unselfish in their attitude.

As far as the contests were concerned, as is always the case, the judges and the audience did not agree on several decisions, however, as a whole the breaks were about even.

P. H. S. did not win—she did not expect to win, due to the fact that we did not have any contestants in the Domestic Science Department. Exclusive of that particular course, however, she did take first place in the other events, making a very strong showing in athletics and music and her share in the honors of the scholastic work. We are looking forward to a S. E. K. P. S. T. this year that will by far excel either of the others. We are desirous of a great interest being manifested in this movement for it can and should be made to mean much to the schools of this particular section of Kentucky.



FEATURES

School Calendar 1922-23

- September 6. First call for all football candidates.
11. School re-opens with larger enrollment than in previous years.
14. Senior invitations, class rings and cards ordered.
22. First football scrimmage. High School gives All-Stars their annual drubbing.
26. Kiwanis Club entertains faculty.
29. Union College 0; Mountaineers 40.
- October 6. Lebanon Junction 0; Mountaineers 33.
13. Friday. Harlan Ineligibles 20; Mountaineers 0. Ray Wood suffers broken leg in scrimmage play.
14. Pineville Kid Mountaineers lick the Harlan Chipmunks 14 to 7.
20. Second All-Star game, High School repeats.
27. Stanford 0; Mountaineers 26.
31. Emma Hendrin gives barn dance. Football team, faculty and students attend.
32. Wayne Greene fails to prepare Algebra lesson.
- November 3. Pineville 57; Winchester 26. A free scoring game featured by aerial attack of Winchester and the line plunging of the Mountaineers.
10. Pineville 19; Danville High School 7.
17. Open date. No game because of injuries to too many regulars as result of hard fighting shown in the last three games.
24. Pineville 54; Richmond 0. Richmond gives Big Boy Wilson chance to make unsuspecting getaway with pigskin. Last seen near Fourmile.
25. Saturday. No excuse blanks issued.
29. Pineville 41; Middlesboro Yellow Jackets 7.
- December 12. Kiwanis football banquet.
20. Life members of A. A. give banquet to Mountaineers and Kid Mountaineers.
22. First issue of Volume 2, Maroon and Gold. School lets out for holidays. Several teachers unable to go home for the lack of time.

THE PINE CONE

- January**
- 2. School re-opens.
 - 5. Dr. Trigg, A. M. Thomas speaks in assembly.
 - 10. Senior class completes arrangements with Knoxville Lithographing Co. for publication of Pine Cone. Basketball practice starts.
 - 12. Dr. Thomas visits school again.
 - 17. Starvation period begins. Ladies' Aid of Methodist Church discontinues sale of lunches in basement.
 - 19. First basketball game. Independents 31; P. H. S. 6.
 - 23. "Kiwanis School Days" for annual.
 - 26. Manchester High School 22; P. H. S. 5.
 - 27. Williamsburg H. S. 22; P. H. S. 5.
- February**
- 2. Harrogate 22; P. H. S. 4.
 - 9. Middlesboro H. S. 19; P. H. S. 13.
 - 12. Lincoln's Birthday. 30 minutes holiday.
 - 16. Rose Hill 14; P. H. S. 13.
 - 21. Russell Crooks arrives at school on time.
 - 22. High School Girls 3; Union College 31.
 - 23. Dr. Vogel delivers stirring address in chapel. Middlesboro H. S. 26; P. H. S. 12.
 - 24. Barbourville H. S. 17; P. H. S. 15.
- March**
- 1-2. Term Examinations.
 - 2. Team went to district tournament at Barbourville. P. H. S. 22; Brodhead H. S. 17. Entered semi-finals with Williamsburg. Williamsburg H. S. 21; P. H. S. 16. High School Girls 7; Barbourville H. S. 8.
 - 9. Dr. George R. Stair of Boston, addresses chapel. Trick basketball game. Freshman 22; "Awkward Squad" 10. Freshman get rich quick.
 - 13. Spring Football practice begins. 8-A Class party. Stunt program by Miss Sims' pupils.
 - 16. Preliminary debates for Kentucky Debating tournament. Pineville wins both debates.
 - 20. Dr. Violette speaks in chapel.
- April**
- 6. Red Roberts makes football talk in chapel. Interesting musical program rendered.
 - 10. High School faculty picnic.
 - 12. Clean-up day observed by school. New ball park started.
 - 19. Senior class presents "Much Ado About Betty."



Publication Staffs

Maroon and Gold


Editor-in-Chief	- - - - -	- -	Lucy Gragg
Business Manager	- - - - -	- -	Herbert Rollins
Personals	- - - - -	- -	Jeanette Metcalf
Exchange	- - - - -		Florence Samuels and Elizabeth Kellems
Jokes	- - - - -	- -	Effie Arnett

PINE CONE '23 STAFF


Editor-in-Chief	- - - - -	- -	Harold Card
Business Manager	- - - - -	- -	Wayne Greene
Jokes	- - - - -	- -	Ray Wood
Art	- - - - -	- -	Elizabeth Kellems
Assistant Art Editor	- - - - -	- -	Russell Crooks
Photography	- - - - -	- -	Effie Arnett
Faculty Advisors for both publications	- -		Mr. Shipp and Mr. Jones

THE PINE CONE


A
P
A
C
K
E
T
O
N
T
H
E
R
I
V
E
R
H
E
R
E




DERBY DAY AT PINEVILLE.




THE
N
E
E
D
L
E
E
A
S
T
O
F
P
I
N
E
V
I
L
L
E




W
H
A
T
S
W
R
O
N
G
W
I
T
H
T
H
E
S
E
P
I
C
T
U
R
E
S
?




FALLS OF THE ZAMBEZI



THE LOCAL HARBOR



ST. CREEK BRIDGE



LOOKING NORTHWARD

THE PINE CONE

Jokes

Miss Metcalf: "Abe, why can't you read these Russian names like Michaelovitch, Androvitch, Jackovitch, and Stephanovitch?"

Abe Isaacs: "I can't tell vich is vitch."

David Earl: "Do you notice any change in me?"

Emma Hendren: "No, why?"

David: "I just swallowed a nickel."

Bob: "Did you receive a cordial welcome?"

Mike: "More than that; I received some welcome cordial."

Ray Wood: "How did you keep your donation a secret?"

Wayne Greene: "Easy; I sent them an anonymous check."

Jim: "You certainly have a trim little waist."

May: "Yes, there is no getting around that."

The first stock company was floated in Noah's Ark.

Effie: "My father is a self-made man. He started out in business working in a store for \$12 a month, and in eight years he owned the store."

Lucy Gragg: "That is good but I couldn't do it in the store I am working in now."

Effie: "Why not?"

Lucy: "We have cash registers."

Russell: "I'm down on Percy for life."

Sherley: "What's the reason?"

Russell: "He wrote me a letter from Florida saying that he had shot a seven foot alligator, and when he shot its twin brother he would have a pair of house slippers made for me."

"John, John, get up, the gas is leaking."

"Aw, put a pan under it and go back to bed."

Emma Wayne: "You viper."

Earl: "You snake charmer."

George Asher: "Lucy reminds me of a checker player."

Earl Caton: "How so?"

George: "She plays with twelve men at once."

Mrs. Casey: "What time was it when those two Fords went by?"

Casey: "Tin after tin."

Stranger to Edwin Patterson: "Please tell me how I could recognize Mr. Brown if I should meet him."

Edwin: "O, you will know him by his Pullman teeth."

Stranger: "Pullman teeth; what are they?"

Edwin: "One upper and one lower."

"That man is wanted in Middlesboro."

"What for?"

"He's a crook."

"What do they want with any more crooks in Middlesboro?"

THE PINE CONE

Ed.: "I haven't spoken to Jeanette for seven days."

Georgia: "What's the matter, have a fuss?"

Ed.: "No, I am too polite to interrupt her."

Doctor: "Dan, you have the measles; you can't go to school."

Dan: "But Doctor, what will you give me to go to school and spread them?"

"I wish to do something big and clean before I die."

"Why not wash an elephant then?"

She: "Before we were married you told me you were well off."

He: "Well—I was."

Leoma: "Why did it take Mr. Jones so long to become a prof.?"

Elizabeth: "Spring it."

Leoma: "Because he got there by degrees."

Herbert and Tom Carnes were having an argument.

Tom: "What do you know about music, Herb?"

Herb: "Man, I'm a born musician; my eyes are sharp and my feet are flat."

Tom: "What is your favorite piece?"

Herb: "Seven come 'leven."

Tom: "That isn't music."

Herb: "It is if you play it right."

Little boy to a man riding down the street in a Ford with one foot hanging out:

"Hey Mister, did you lose your other skate?"

"Abe Euster rushed a girl,
And Sammy rushed her, too;
Abe won; and now poor Sam
Calls Abe a 'rushin' Jew.'"

Pat: "Somehow darkies and chickens seem to have a strange affinity."

Herb.: "That is easy to explain."

Pat: "Tell me then."

Herb.: "Well, you see one is descended from Ham and the other from eggs."

Senior: "Gee; what a dumbbell you are."

Junior: "Maybe so, but I at least ring true."

"Mabel, be quiet and chew your gum like a lady."

Mother to the Maid: "Nora, what's the matter with little James that he is crying so hard?"

Maid: "Why mum, he lost his equilibrium and fell off the ladder."

Mother: "Well, tell him to hush crying and we will buy him another one soon."

THE PINE CONE



Through the kindness of our
advertisers this volume was
made possible. You can show
your appreciation by patron-
izing them.

—THE PINE CONE STAFF

WHO—Pineville Insurance Agency
HERE—Bell National Bank Bldg.
AT—Insurance of All Kinds

All the Time - Everywhere

Guarantees

SAFETY **S**ERVICE **S**ATISFACTION

3 - BOTH PHONES - 3

A. Rector

Diamonds, Watches and
Jewelry, Optical Goods,
Silver-ware, Clocks,
Musical Instruments, Etc.

PINEVILLE
KENTUCKY

**Russel-Barlow
Hardware Co.**

INCORPORATED

HARDWARE

PINEVILLE

KENTUCKY

J. I. Patterson

DRUGGIST

**Gibson-Low
Motor Car
Company**

INCORPORATED

DODGE BROTHERS
PACKARDS

Gasoline, Oils and
Accessories
Service

F. A. Heath Motor Car Agency

DISTRIBUTOR FOR

CHANDLER CARS

BELL - HARLAN - KNOX - WHITLEY COUNTIES

The New Chandler with its marvelous Pikes Peak Motor
flattens all hills

You are invited to ride in the New Chandler--Note the
quick "Get Away," the comfort in riding and the
beautiful Design in Body lines

PINEVILLE

❖

KENTUCKY

Ready-to-Wear that
pleases you

Faulkner Garment Co.

PINEVILLE - KENTUCKY

"Wooley" Garments for Ladies

"Cullee" Clothes, the Guaranteed
Line, for Men

1899

1923

Then---

Twenty-four years ago when this institution was in its infancy one man did all the work—at that time four teachers did all the work in your school.

Now---

It takes all the time of six men to do the work in this institution and twenty-three teachers are employed to take care of your school.

Every day in every way we're both growing bigger and better. Inseparably linked to the PUBLIC SCHOOLS for a bigger and better PINEVILLE is the

FIRST STATE BANK

TIME TRIED

PANIC TESTED

Pineville Steam Laundry

HODGES BROS., Props.

Better known on the campus as "Miss Prissy" because of their hankering to see everybody all the time wearing fresh laundered and newly pressed clothing.

Miss Osborne's Shop

Crepe de Chine, Organdie---All Sheer Materials
for Commencement Dresses, Hats for
all Occasions---Gifts

Chapin-Sacks Corporation

MANUFACTURERS OF

"The Velvet Kind"

CREAM OF ICE CREAMS

PINEVILLE, KY.

We can't make all of it - so we make the best of it

"LOOKS GOOD - FITS WELL - LASTS LONG"

THAT'S THE SIMPLE STORY OF

Kuppenheimer *Good Clothes*

Rowntree Clothing Co.

INCORPORATED

Our Hobby is to Please You

Exclusive
High Grade
Shoes



Exclusive
High Grade
Men's
Furnishings

Special Agency

Phillips & Patterson

PINEVILLE, KENTUCKY

City Barber Shop

First Class Work First Class Material

First Class Barbers

Your Patronage Solicited

D. E. STARBUCK
Proprietor

Authorized Ford and Fordson
Sales and Service

GENUINE FORD PARTS USED

Lee Puncture Proof Tires

Exide Batteries

Try Our Service---We Guarantee All Work

PINEVILLE MOTOR CO., Inc.

PINEVILLE, KENTUCKY

Too many people look on thrift as a system of self-discipline, self-denial and "doing without."
This is the wrong idea.

Thrift is not giving up what you want. It is one of the best methods known for getting what you want.

Thrift is knowledge; knowledge is power.

Continue your education at the receiving teller's window of this institution. Push, pluck and perseverance coupled with a well educated bank account, usually brings success.

THE BELL NATIONAL BANK

PINEVILLE, KENTUCKY

*We invite you to inspect our lines of Ladies' and
Gents' Furnishings*

FOR MEN

Florsheim Shoes - Just Wright Shoes
Wilson Bros. Furnishings

FOR LADIES

Black Cat Hosiery - Pom-Pom Dresses
The American Girl Shoe

ISAAC'S STORE

PINEVILLE, KY.

WANTED!

Your Patronage to one of the best lines of

HARDWARE

Exclusive Agents for the Famous

H & W Paints and Varnishes

Globe Stoves and Ranges

Red Star and New Perfection Oil Stoves

Coles Down Draft Ranges and Heaters

Pitkin and Brooks-English Dinnerware

J. M. GREENE & SONS

BUILDING MATERIAL

LUMBER SASH DOORS

CEMENT ROOFING

WALL BOARD
DIMENSION

Wasioto Lumber Company

INCORPORATED

“HOMES”

OUR POLICY

THE POLICY OF THIS BUSINESS, is to conduct a store on the principles of good fellowship.

A place where honesty of purpose is above temporary gain.

Where buyer and seller meet on common ground to exchange value for value.

Where service, courteously rendered is extended to all alike.

Where supplying your wants at the lowest cost to you is our constant aim.

Where economy of management, plus quantity buying at lowest prices, are constantly producing better values.

Upon this basis we solicit your patronage.

The Stanard Hulme Hadden Co.

MASONIC TEMPLE
PINEVILLE, KENTUCKY

SODAS

LUNCHES

FLOCOE SWEET SHOPPE

"Where Friends Meet"

CIGARS

CANDIES

We sell more Groceries and Meats than any other Store

This insures Fresh Goods, because we keep them moving.

Our prices are according to the quality we sell.

Fresh Vegetables always on hand.

W. T. CATON & SONS
SANITARY MARKET

DRINK CARBONATED BEVERAGES

BOTTLED BY

PINEVILLE BOTTLING WORKS

OUR SPECIALTIES

PARFAY AND CHERRY BLOSSOMS

PAIGE

JEWETT

REX MOTOR CO.

ALSO DISTRIBUTORS OF

Overland and Willys-Knight Motor Cars

PINEVILLE, KY.

The Barner Studio

PORTRAITS THAT PLEASE

First Floor Masonic Temple

PINEVILLE, KY.

N. T. Arnett & Son

DEPARTMENT STORE

Distributors of High Grade Merchandise
for Men, Women and Children

Funeral Directors and Embalmers

DAY OR NIGHT SERVICE

Both Phones



THE END