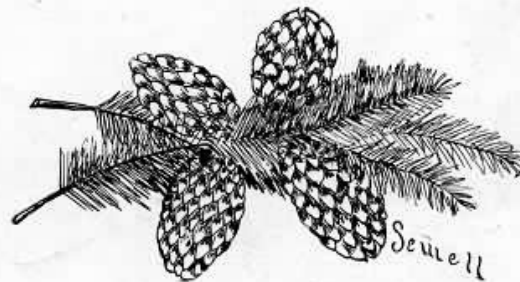


FIRST STATE BANK

THE PINE CONE
1925

VOLUME III



PUBLISHED BY
THE SENIOR CLASS
OF THE
PINEVILLE HIGH SCHOOL
PINEVILLE, KENTUCKY



FOREWORD

To call back to your mind in the days to come the memories of your High School experiences is the purpose of this Volume and the sincere wish of its editors.



CONTENTS

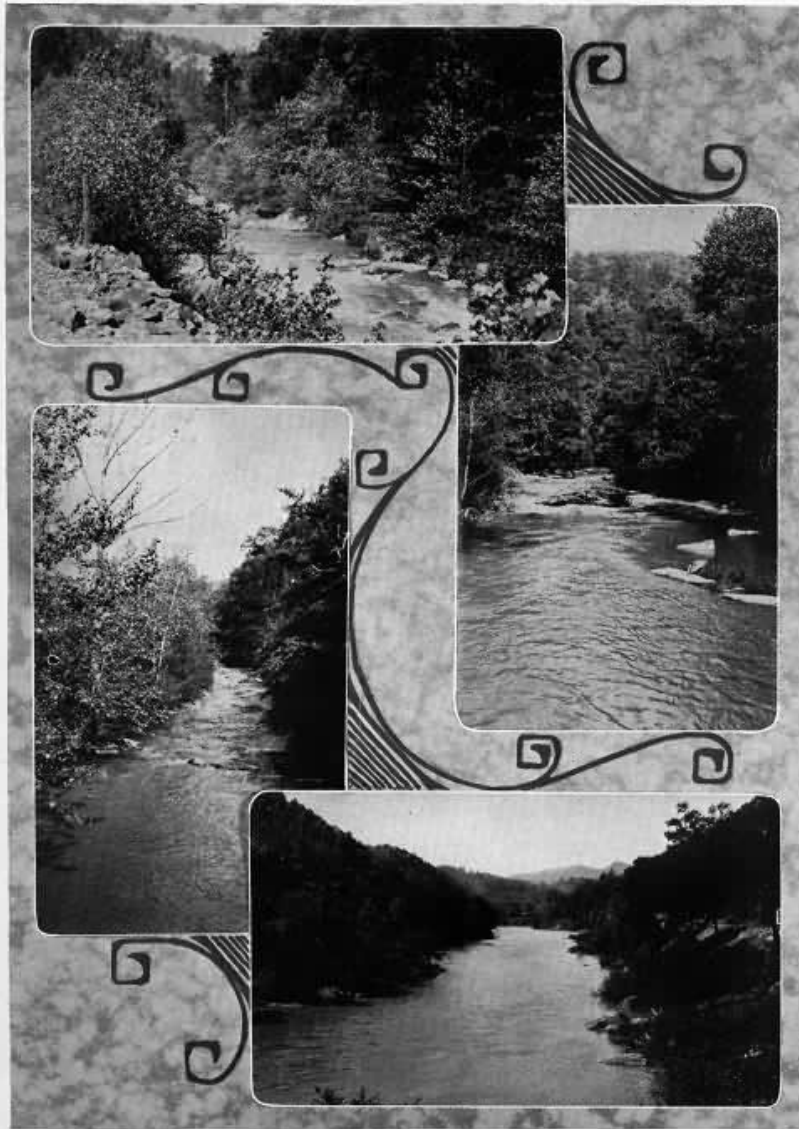
- Faculty*
- Classes*
- Organizations*
- Athletics*
- Publications*
- Ads*



SUPT. W. F. JONES

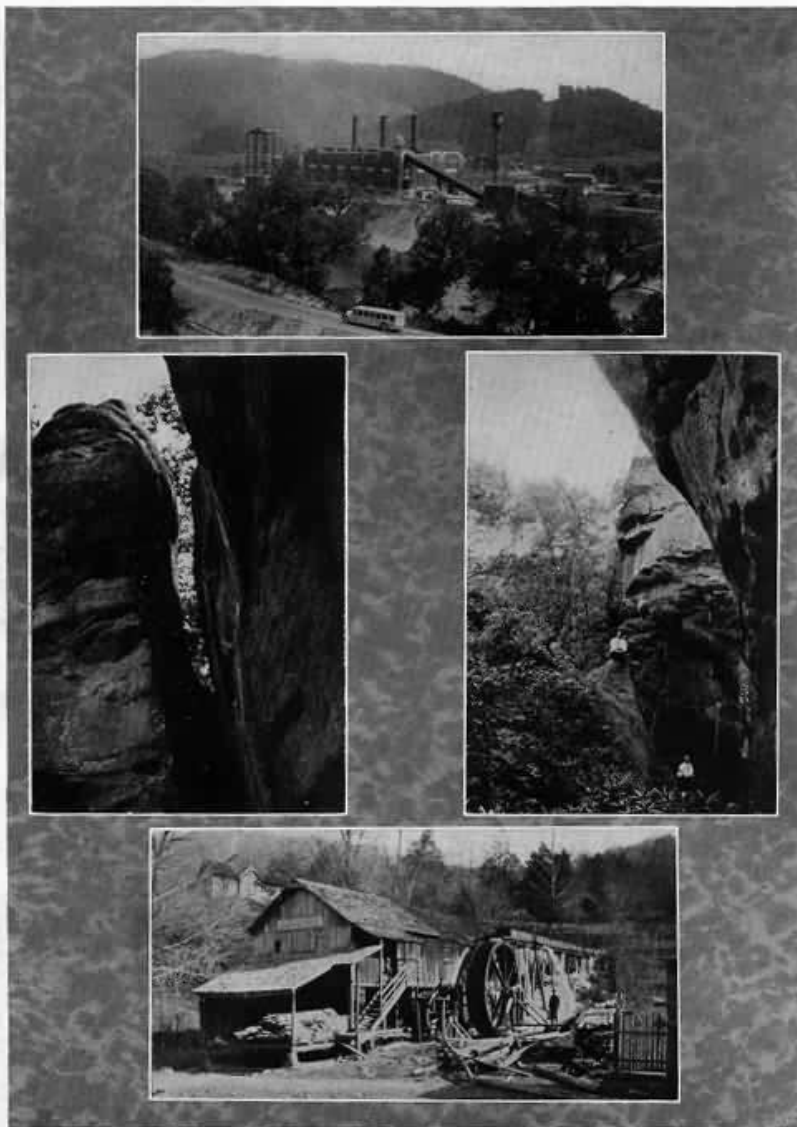
WE, the class of nineteen hundred and twenty-five having worked throughout our High School career with Mr. Jones, first as Principal of the High School and then as Superintendent of Schools realizing his untiring efforts, seeing the greatest of interest taken in each of us, and fully aware of his efficiency as a leader, do wish to show our appreciation of such leadership by dedicating this volume to his honor, bearing in mind that he has left a life long influence in the lives of Pineville students.

THE PINE CONE



SCENES IN AND ABOUT PINEVILLE

THE PINE CONE



SCENES IN AND ABOUT PINEVILLE

THE PINE CONE

FACULTY

L. C. HENDERSON

B.S. IN MEDICINE

Principal

Head of Science Department

Graduate University of Mississippi 1921; Coach Potts Camp High Basketball Team '21-'22; Instructor in Science and Assistant in Athletics Pineville High '22-'23; Elected Principal High School '23-'24; Principal '24-'25; Coach Girls' Basketball '24-'25; Graduate Work University of Kentucky Summer of '23.



FRIEDA M. HELLER

Assistant Principal and History

University of Kentucky; University of Cincinnati; Faculty of Newport, Ky. High School; Principal Enfield, N. C. High School; Assistant Dietitian North Carolina College for Women Summer '22; Instructor in Extension Work Summer '23; Pineville High School '23-'25.



W. O. SNODDY, B.A.

Teacher of Mathematics

B. A. University of Wisconsin '24; Instructor in Mathematics Pineville High School '24-'25; Assistant Physical Education the same; One Year Graduate Work University of Wisconsin '23-'24.



THE PINE CONE

FACULTY



MYRTLE McCRACKEN

Head of Latin Department and Expression

Martin College, Pulaski, Tenn.; George Peabody College, Nashville, Tenn.; University of Chicago, Chicago, Ill.; Principal of Senior High School and Expression, Wickliffe, Ky.; Head of Latin and Expression, Shepherdsville, Ky.; Head of Language and Expression Pineville High School since '23.



H. WILLARD JOHNSON, A.B.

Athletic Director and Physical Education '23-'25

A.B. Hamilton College, N. Y. '20; University of Illinois Coaching Sessions '23-'24; Athletic Director Virden, Illinois Community High School '20-'22; Athletic Director Lyons High School, LaGrange, Illinois '22-'23; Athletic Director Pineville High School '23-'25.



MRS. A. B. RAY

Head of English Department

Graduate University of Alabama '08; Graduate Work University of Alabama '09-'10-'11; Head English Department Brighton High School, Birmingham, Ala., '10-'11; Head English Department Pineville High School '23-'24 and '24-'25.

THE PINE CONE

FACULTY

ALVA E. TANDY
Mathematics and Latin

Princeton College, Princeton, Ky.; Graduate Western Kentucky State Normal, Bowling Green, Ky.; Peabody College, Nashville, Tenn.; Teacher Pineville Junior High School since '21; Peabody College Summer Term '24; Junior High Mathematics Pineville '24-'25.



EARL H. SMITH, A.B.
Assistant English and History

A.B. University of Kentucky '23; Teacher Junior High English and History Pineville High School '24-'25.



LEOLA GASKINS
Assistant in English

Andrew College, Cuthbert, Ga.; Martin College, Pulaski, Tenn.; University of Tennessee, Knoxville, Tenn.; University of Georgia Summer School; Teacher in English, Willacoochee High School; Sixth Grade, Cochran, Georgia; Pineville Sixth Grade '23-'24; Junior High English '24-'25.



THE PINE CONE

FACULTY



LOUISE BUCK

Music

Howard College, Gallatin, Tenn.; Student University of Chicago; Graduate College of Music, Cincinnati, Ohio; Teacher Clinton College One Year; Barbourville High School One Year; Pineville High School since '21.



MRS. HATTIE VANCE

Secretary to Superintendent of Schools, Pineville High '23-'24; same '24-'25.

THE PINE CONE



THE PINE CONE

SENIORS



LEE ROY WILSON
(BIG BOY)

"I may justly say with the conqueror of Rome, I came, I saw, I conquered."

President of Senior Class; Business Manager of Paper and Annual; Varsity Football '22-'23-'24; Varsity Track '24; President of Boys' Club '24-'25; Song Leader of Varsity Club '25; Boys' Club Conference '24; Member of Dramatic Club.

Lee Roy's heart is as big as he is,—in other words, he is always more than willing to do the dirty work if it will help anyone. He is a leader in all school activities. Long may he flourish.



MARY JOHNSTON COLLIER
(MARY)

*"Happy am I, from care I am free,
Why aren't they all contented like me?"*

President of Class '24; Secretary of Class '25; Treasurer of Class '23; Dixie Girls' Club; Science Club; Pineville Fun Review; Assistant Editor of Maroon and Gold; Joke Editor of Maroon and Gold; Asst. Editor of Annual; Member of Advisory Council of Girl's Club.

*"A lady very industrious who changes her mind,
She likes the men illustrious,
And in courting, she is never behind."*

Mary is a friend in need, loyal, never failing in good humor, the pride of her teachers, and a good worker, all of which make her one of the most popular students in P. H. S.



EDGAR DEAN
(PREACHER)

"A student with whom reason reigns supreme."

Joke Editor of Annual '25; Vice-President Senior Class '25; Abe Lincoln Society.

"Preacher is the soul of wit."

The Senior Class of '25 has the distinction of having a married man in its midst. Preacher Dean has a lot of gray matter and can always be depended upon.

THE PINE CONE

SENIORS

FLEM DANIEL SMITH

(SIR FLEMING)

"No one knows what he can do until he tries."

Abe Lincoln Literary Society '22; Boys' Literary Society '21; Varsity Football '22-'23-'24; Varsity Club '22-'23-'24; Boys' High School Club '25; Annual Staff '25; Class Secretary '25; Senior Jick Club '24-'25; Pineville Fun Revue.

If Flem fools the world like he has the teachers, he'll be some great man. Flem has been a good student, a hard worker and a necessary part of any undertaking. May he be as much in demand in the activities of the world as he has been during his high school career.



MARTHA JANE RAMSEY

(JANE)

*"Faithful through endless confusion,
Loyal, honest and sincere."*

Dixie Girls' Literary Society '22; Science Club '24; President Girls' Club '25; Editor of Maroon and Gold '25; Editor of Pine Cone '25; P. H. S. Orchestra '24-'25; Captain Girls' Basketball Team '25; Pineville Fun Revue; Dramatic Club '25; L. R. C. '25.

Jane is very brilliant, and when she speaks she says something. A girl very much admired and has the ability of making friends wherever she goes. A good student and always bound to lead. We hope she may make as good a record in life as she has here.



ROBERT ROSWELL HARKNESS

(ROSS)

"By their works you shall know them."

Senior Class Historian; Abe Lincoln Literary Society.

A quiet, unassuming fellow who has ideas all his own. He was not a Jack of all trades but had a knack for reading any old thing that was readable. He was rarely ever without a magazine of light fiction but was also fond of histories. A very amiable chap and liked by all who knew him. We know he has possibilities and only hope they may be realized.



THE PINE CONE

SENIORS



RALPH HOLZWORTH

(HASHIE)

"Just wait until this ship comes sailing in."

Boys' Literary Society '21; Abe Lincoln Literary Society '22; Boys' High School Club '25.

Although Hashie has been likened to a blind dog in a meat-house, he is very useful in "Lab." work. We all wish sincerely, that he will attack every undertaking in the future, with the same enthusiasm and earnestness that have predominated his character during his H. S. days.



CLYDE BOSTON

(CLYDE)

"They prize books most who are themselves wise."

Maroon and Gold Staff, Annual Staff, Science Club '24; President of Class '23; Girls' Club '25.

One of our most beloved students is Clyde. She joined us in her Sophomore year and we have reaped the benefit of her presence ever since. Clyde is the soul of honor and one of our most studious pupils. May she live long and have a successful career.



RAY GRIGGS

(DADDY)

"Perseverance is the key to success."

Varsity Football '24; Member Varsity Club '25; Abe Lincoln Literary Society '21; Senior Jock Club '24-'25.

A gentle tongued, modest, handsome fellow whose looks have made many a fair maiden sigh. Always near the top whether on the Football field, or in the class room.

THE PINE CONE

SENIORS

BERNICE ALLISON

(BERNICE)



"Smooth runs the water where the brook is deep."

Treasurer Freshman Class '22; Sydney Lanier Literary Society '22; S. E. K. P. S. T. '22; Girls' Club '25; Maroon and Gold Staff '25; Annual Staff '25.

Bernice came here in her Freshman year. Although she hasn't been here at all times, but when with us she is a student always ready and willing to co-operate with the class for the best. She is very devoted to her class activities and also her work. With a determination in view she never ceases until she has accomplished it. May she meet with much success in life.

EDWARD SMITH

(ED)



"Labor conquereth all."

Boys' Literary Society '21; Abe Lincoln Literary Society '22; Varsity Football '22; Track '23; Boys' Club '25; Senior Jock Club '24-'25.

"Give every man thine ear but few thy voice

Take each man's censure but reserve thy judgment."

Ed abides by the above very closely, but when in a rather close place, one can always be sure of some very good advice by observing Ed.

THE PINE CONE

SENIORS

GEORGE ASHER

(NUT)



"Less men suspect your tale untrue, keep possibility in view."

Varsity Club '23-'25; Football '22; Basketball '23; Boys' Club '25; Football Squad '21-'24; Pres. Class '22; Sec'y-Treas. '23; Senior Jick Club '24-'25.

George came back to our midst this year and has proved himself to be one worthy of our class. May he continue the good work.

EULA VICARS

(EULIE)



"Why all this toil and trouble?"

Sidney Lanier Society '22; Girls' Club '25; Maroon and Gold Staff '25; Annual Staff '25.

Eula's good disposition and humor will always be remembered. She is very serious at times, but more often ready to play a joke as Jane can testify. When Mr. Henderson calls for "Lab." books she is especially popular with the boys. She always accomplishes anything she undertakes.

Senior Class History

On one bright morning in September in 1921 there entered P. H. S. a large band of boys and girls; who, bewildered by the strange sight and sounds, rushed wildly here and there until shown to their rooms by Mr. W. F. Jones. The foregoing custom had been to initiate the Freshies,— but this year the Sophs were unable to carry the rule because of their small class. There was a rumor that the Seniors and the Juniors were joining together to aid the Sophs, but all this faded away when we were taken in by the Seniors and formed into the Abe Lincoln Society for the boys and the Dixie Girls' Society for the girls. Time passed on with our class becoming accustomed to the ways and means of getting along in High School life, during which we contributed a great deal to the Football team, as the line was made mostly from the boys in our class.

The ship sailed smoothly on until the next year when we became Sophomores. Before long however, there came along Caesar and other gents of ancient times, who diverted our attention from the Freshmen to this obstacle; but by the use of ponies and other burden-bearing animals we succeeded in this. Sad to relate in the Sophomore year our large number was greatly diminished by several performing the Holy Rites of Matrimony. In this year much to our joy we were represented by six on the Varsity squad.

In our Junior year we were still smaller owing to some following other channels than that of education. Since we were all striving to become Seniors the year passed without drawing us into many entanglements.

As Seniors no one would recognize us as being the same band that made its debut four years ago. The class is honored by having the presidents of both the Boys' and the Girls' club in its midst. The time is nearing when we will step out from P. H. S., and we look forward to that day with a great joy, for being able to graduate and with a great sorrow for leaving dear old P. H. S.

By F.D.S.

IN THE PINE CONE



SENIOR SNAPSHOTS

THE PINE CONE



THE PINE CONE

Junior Class

COLORS: *Red and Blue*

FLOWER: *White Carnation*

CLASS OFFICERS

ROY GIBSON - - - - - *President*
 MARY L. BRADLEY - - - - - *Vice-President*
 DEE JAMES - - - - - *Sec'y-Treas.*

GRACE STONE, DELMAS CAWTHORNE
Historians

CLASS ROLL

LOUISE ASHER	DEE JAMES
MABEL BISHOP	NANNIE MURRAY
MARY L. BRADLEY	CAROLINE NICHOLSON
MAE BROUGHTON	ERNEST PETREY
JAMES CARNES	OPAL PURSIFUL
DELMAS CAWTHORNE	GRACE STONE
KATHERINE DAVIS	CLEDITH SEWELL
CHARLIE DEAN	LANTA STRUNK
DAVID EARL	BOB VANBEVER
EVA GRAGG	LOUISE WILSON
ROY GIBSON	JOSEPHINE WILSON
SOPHIA GILBERT	HELEN WELER
EDNA GREEN	RUTH WILLIAMSON
ROBERT HELTON	



JUNIOR CLASS

Junior Class History

On entering school in 1922 our class, numbering fifty-four, was the largest the Pineville School has ever had up until that time. We found the trials were hard and that tribulations were many but we were soon lined out into a real class. The standards set for us were hard to live up to but as a class we thrived on such and when the year was finished we had furnished a goodly number of athletes, and were at the top in our standard of scholarship.

On passing into our Sophomore year we found our ranks much smaller than the preceding year. A few had thought themselves sufficiently educated in the Freshman year, others decided to join the matrimonial bureau. In our Sophomore year we found ourselves superior to the other classes both in scholarship and athletics which when mentioned, rankles deep into the hearts of many of our Seniors.

In our Junior year we were even more prominent than the two preceding years. We have the tallest girl in school; the sheikiest boy; the captain of the football team; the captain-elect for 1926; the basketball captain for this year and also next. In addition to all this a number of our class displayed such unusual ability, that they were chosen for all dramatic activities during the year.

Long live the Juniors of nineteen hundred and twenty-five.

THE PINE CONE



Sophomores

THE PINE CONE

Sophomore Class

COLORS: Red and White

FLOWER: Red Rose

MOTTO: "United we stand; divided we fall."

CLASS OFFICERS

- DONALD CAWTHORNE - - - - - President
- MARIE BYRLEY - - - - - Vice-President
- ARCHIE ROLLINS - - - - - Sec'y-Treas.

CLASS ROLL

- | | |
|------------------|-------------------|
| ALBERT BOSTON | MAE HOLLINGSWORTH |
| HERBERT BRACKETT | LENA ISAACS |
| MARIE BYERLY | DAN JOHNSON |
| HAZEL BYERLY | HELEN JOHNSON |
| GEORGE BAKER | BESSIE JOHNSON |
| EDNA COX | JESSIE JOHNSON |
| MURIEL CHAPPELL | LUCILLE KELLY |
| HESTER EUSTER | JAMES LANE |
| FRANCES EARL | ROBERTA McDONALD |
| MARIE FRANCE | HAZEL RHODES |
| HESTER GREENE | MARGARET ROACH |
| BEN HALE GOLDEN | WILLIAM RAMSEY |
| LOUISE GALLOWAY | LEONARD SLUSHER |
| TIP HAMMONS | ROSA TURNER |
| MAGGIE HAM | ETHEL WOODS |
| MARIE HOWARD | LILLIAN WILKERSON |

GYPSY WILSON



SOPHOMORE CLASS

Sophomore Class History

Father Time has taken another year from us and the green bewildered Freshmen of last year have budded into comely Sophomores. The first thing we did on entering School last fall was to create a visible sign of our new dignity of upper classmen. This resulted in sheared heads for several Freshmen.

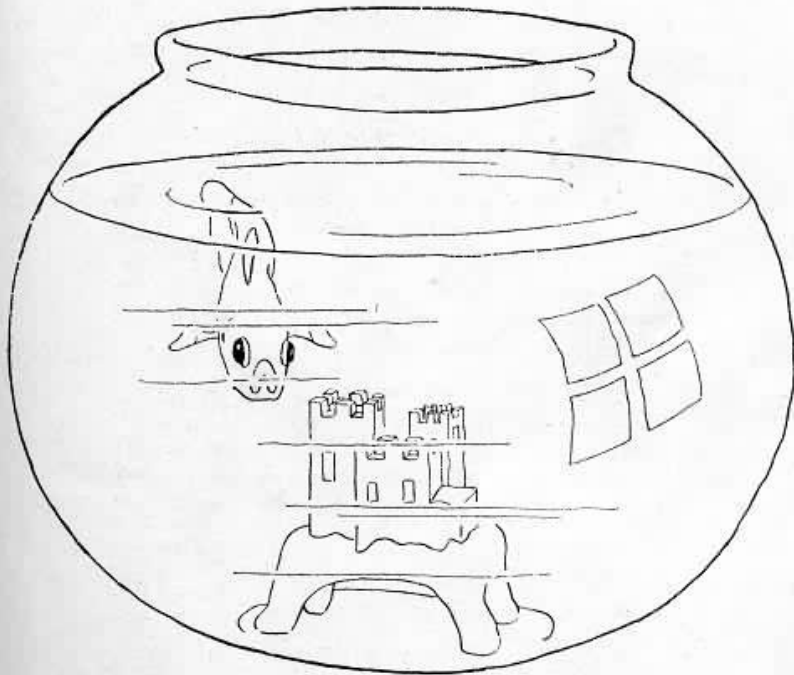
The Sophomores are justly proud of their record in athletics having contributed five members to the varsity team in basketball. Among the girls Marie Howard, Muriel Chappell, and Mae Hollingsworth. Hollingsworth making All-Southeastern Kentucky team.

In football we as Sophomores did not fall short of our basketball record and some of our boys are to be the coming stars of Pineville High School, we hope.

Practically all the girls in the Sophomore class are members of the Girls' Club and all the boys are live wires in the Boys' High School Club. The Sophomores have many things in view for the future that will improve the class and help it grow in strength and fellowship.

Ere another chapter in the book of years has closed, we have begun our career as Juniors, ever pressing forward to one goal—graduation and success.

THE PINE CONE



FRESHMEN

THE PINE CONE

Freshman Class

COLORS: *Green and White*

FLOWER: *White Carnation*

MOTTO: *"Green and Growing Fast"*

CLASS OFFICERS

EDWARD SMITH - - - - - *President*
 PAUL GREENE - - - - - *Vice-President*
 EDWARD WILSON - - - - - *Sec'y-Treas.*

CLASS ROLL

EDWARD ASHER	JAMES JEFFRIES
LOUISE BOWMAN	EARL KIRK
ELIZABETH BOWMAN	RAYMOND MORGAN
RAY BOWMAN	FRANCES MORGAN
JETT BAILEY	FOYSTER MIRACLE
FAULKNER BIRD	KATHERINE MIRACLE
VIRGIL BINGHAM	GENEVA PURSIFUL
BERNODINE CULTON	LORENA PRUITT
ALIE CARNES	JUANITA REYNOLDS
SOLOMON CARNES	ETHEL RODGER
BUTLER CARRINGTON	RUTH RUFFY
DEAN CATON	VERNON ROLLINS
SONNEY DYER	PAUL STRUNK
RUSSELL ELAM	JAMES SPURLOCK
THOMAS FOBY	JAMIMA SEWELL
DAN GABBEARD	MORRIS SCOTT
ELIZABETH GRAGG	MARY STARNES
RAYMOND GADDIE	RUBY STONE
PAUL GREENE	BUD SMITH
MAE GOINS	NATHANIEL SMITH
LEON HOSKINS	EDWIN SMITH
OCTAVIA HOSKINS	JAMES STARNES
MABEL HOSKINS	ANNA TURNER
EARL HAMMONS	EVERETT TURNER
ROBERT HYDE	MARGARET WHITAKER
ED HUGHES	EDWARD WILSON
OSCAR ISAACS	BERTHA WILSON
WILLIE INGRAM	CECIL WILSON
JOSEPHINE JOHNSTON	MARIE WADE
PEARL JOHNSTON	



FRESHMAN CLASS

Freshman Class History

On September 8, 1924, a band of seventy-five green but brave Freshmen entered the doors of our new and sacred Auditorium to matriculate in the higher department of the Pineville High School.

We soon realized what it was to be Freshmen and felt that it would have been more appropriate if the Sophomores had lived in the time of Delilah and Samson. However, we were not discouraged and pressed forward toward the goal, and ere the end of the year we had accomplished many feats.

In Athletics we proved to Pineville High that we are not backward in all things as we had two of our class to star on the best football team that Pineville has ever had. Namely, Earl Kirk and Solomon Carnes.

When the call was issued for candidates for basketball, twelve Freshmen out of thirty candidates reported for the purpose of making some fight to make the team. Which is a very good sign of the loyalty of the class to the school. Another honor was cast upon the class in that Paul Greene was appointed Manager of the Varsity Squad.

As our Freshmen year draws to a close we realize, tho' our deeds have been many, that we still continue to improve and expect to the rest of our stay in Pineville High School. So just watch us next year when school opens and we resume our work as one united body, pressing onward toward the same mark for the betterment of our class and the school which we expect to claim as our Alma Mater in a short while.

THE PINE CONE

Eighth A Class

COLORS: *Black and Orange*

FLOWER: *Black Eyed Susan*

MOTTO: *"We Rise Step By Step"*

CLASS OFFICERS

- LINDA PATTERSON - - - - - *President*
 BURICE NORROD - - - - - *Vice-President*
 WILLIE JEAN HODGES - - - - - *Sec'y-Treas.*

On September 1, 1923, we entered Junior High School. Here we organized our basketball team and gained several victories over other rooms. On field day our room came out victorious and received a banner. Our Literary Society was organized in this room and we gave several parties in which our class took part.

Now we are on the doorstep of High School. We are preparing to enter High School in earnest now. We feel highly honored at being granted a room in the new auditorium.

Our Literary Society was re-organized much to our satisfaction and pleasure. Mr. Henderson let the Junior High School give a program in chapel one Friday morning, which was voted a great success.

Many parties and basketball games were participated in during our eighth year of work in which we were winners a good number of times. We also had some of our boys out for the varsity squad, with some of them showing up well. *Just watch the Eighth A in the future.*

CLASS ROLL

- | | |
|--------------------|-------------------|
| RAE ASHER | BURICE NORROD |
| BILL ASHER | PRESLEY PRICE |
| LUCY BINGHAM | MERCEDES PURSIFUL |
| NELLE CARD | LINDA PATTERSON |
| RUBY EUSTER | EARL STEELY |
| CHAS. GRAGG | ANNIE SLUSHER |
| VERSA HUTTON | OSCAR THOMPSON |
| DENVER HOWARD | SHELBY THOMPSON |
| NOLA HOWARD | HAYS THOMPSON |
| WILLIE JEAN HODGES | HELEN VANBEVER |
| RICHARD LONG | EVELYN VANBEVER |
| KATRINE MATHIS | WALTER WOOLUM |

ALMA WILSON



EIGHTH A GRADE

Page Thirty-four

THE PING CONG

THE PINE CONE

Eighth B Class

COLORS: *Blue and Gold*

FLOWER: *Carnation*

MOTTO: *"Labor Conquers All Things"*

CLASS OFFICERS

BILLIE VANBEVER - - - - - *President*

JAMES GILBERT - - - - - *Vice-President*

LEO ADAMS - - - - - *Sec'y-Treas.*

*We are dear to one another for several years we've been,
 Friends and school-mates all together, about the village, in the glen;
 We are true, we can be trusted, we are loyal just as the rest,
 We pay respect to our dear teachers for we know we've had the best;
 We love the honor of being the first to graduate in our new school,
 We love our classes and our colors and we obey our strictest rule;
 There is hope that we may continue in our peaceful mood along,
 And in the days that are to follow, "Loyalty" will be our song.*

CLASS ROLL

LEO ADAMS	CLIFFORD KIRK
JEANETTE ADAMS	LEVY LEE
AMOS ASHER	GLADYS LOCKARD
GLADYS BRITTON	LOYD MOODY
MYRTLE BINGHAM	EDWARD PARTIN
LELA CORNN	GLOSTER REED
SYLVIA EUSTER	LESTER STUCKER
ABE EUSTER	BILLIE VANBEVER
DOROTHY GALLOWAY	ESTILL VAUGHAN
HELEN GEYER	BESSIE WILSON
JAMES GILBERT	EDITH WOOLUM
BEULAH HOWARD	WALTER ELLIOT
MOJIL KELLY	LEE TAYLOR



EIGHTH B GRADE

Page Thirty-six

THE PINE CONGREGATION



Seventh A Class

COLORS: *Crimson and White*

FLOWER: *Rose*

MOTTO: *"Honesty is the best policy"*

CLASS OFFICERS

CURTISS LAWSON - - - - - *President*
 A. B. CULTON - - - - - *Vice-President*
 BURNETTE TORBERT - - - - - *Secretary*
 RUTH GREENE - - - - - *Treasurer*

In the fall of the year 1918, the proudest people in the United States were the pupils of the class which was just entering school. We fell in love with our teacher who was Miss Daisy Posey at first sight. We started bravely to work and climbed steadily upward until now we have reached the first year of Junior High. A few have dropped out along the way but we still have many of the original class.

At the beginning of this school year our class was divided, the boys were placed in one room and the girls in another, but we were united again at the beginning of the present term to make room for the Seventh B Grade.

We organized a literary society in the Fifth under Miss Conover and have continued the meetings up to the present time with great benefit to all. We have both a boys' and a girls' basketball team and hope some of our members will make the Varsity team in later years.

CLASS ROLL

JAMES BINGHAM	ROSE PIERCE
VIRGINIA CHANDLER	CLYDE REYNOLDS
ENID CHANDLER	DOVEY RHODES
A. B. CULTON	BOYDIE RICE
BERTRAM COMBS	MARY ROLLINS
VIRGIE B. DUFF	MAICIE STONE
EVELYN EUSTER	VERNON SEWELL
ELIZABETH FRANCE	BURNETTE TOLBERT
RUTH GREENE	EMILY VANBEVER
BLANCHE HALLIFIELD	MARY B. WOOD
JACK HALE	BERNICE WELLER
JAMES HUNTER	ESTHER WILKERSON
ALMA JOHNSON	VERLIE WILLIAMS
CURTISS LAWSON	CHARLES WILKERSON
KENNETH MATHIS	CLAYTON WALDEN



SEVENTH A GRADE

THE PINE CONE

Seventh B Class

COLORS: *Black and Gold*

FLOWER: *Pansy*

MOTTO: "*We expect to make our mark. Watch us grow*"

CLASS OFFICERS

SARA MOSS PHILLIPS - - - - - *President*
 JANE SMITH - - - - - *Vice-President*
 ADA HOWARD - - - - - *Secretary*
 JULIA WOODSON - - - - - *Historian*

Entering P. H. S. in nineteen hundred and nineteen the class numbered from twenty to forty sailed along smoothly until September, 1924, when our Superintendent, thinking we were the brightest and most studious pupils in school decided to have us complete the sixth grade in a little more than four months.

Miss Byar proved her ability as a teacher by promoting almost the entire class at the end of the term but she bears the scars from the days of strenuous work, and our fathers and mothers are gray headed from teaching us through the midnight hours.

We think we know as much as any graduate who has gone from P. H. S. but Mr. Jones has something more for us to learn because he started us in the seventh grade with six different teachers.

CLASS ROLL

JOHN BAILEY	EDWARD JOHNSTON
JULIA BAILEY	JANE JOHNSTON
TILMAN BAIN	CHARLES MATTHEW
FLORENCE BINGHAM	LORINE MOORE
SANDERS BINGHAM	CHRISTINE McCARTY
VIRGINIA BOSTON	R. H. NAPIER
MAY BOWMAN	ROY PAGE
JANE BRADLEY	SARA MOSS PHILLIPS
JOSIE DUFF	MARY PITMAN
ULYS EVANS	MAE SMITH
LEWIS GOOCH	JANE SMITH
EDWARD GRAGG	FRANCES STARBUCK
HOMER GREEN	GEORGIA STUART
LAURA GREEN	KATHLEEN THOMPSON
ZELMA GREEN	MARY VANBEVER
DANNY HOSKINS	CLAYTON WILDER
ADA HOWARD	JAMES WOODSON
HELEN HUGHES	JULIA WOODSON
HERBERT JONES	MARY LEE WILSON
RACHEL JONES	ERNEST YOUNKIN

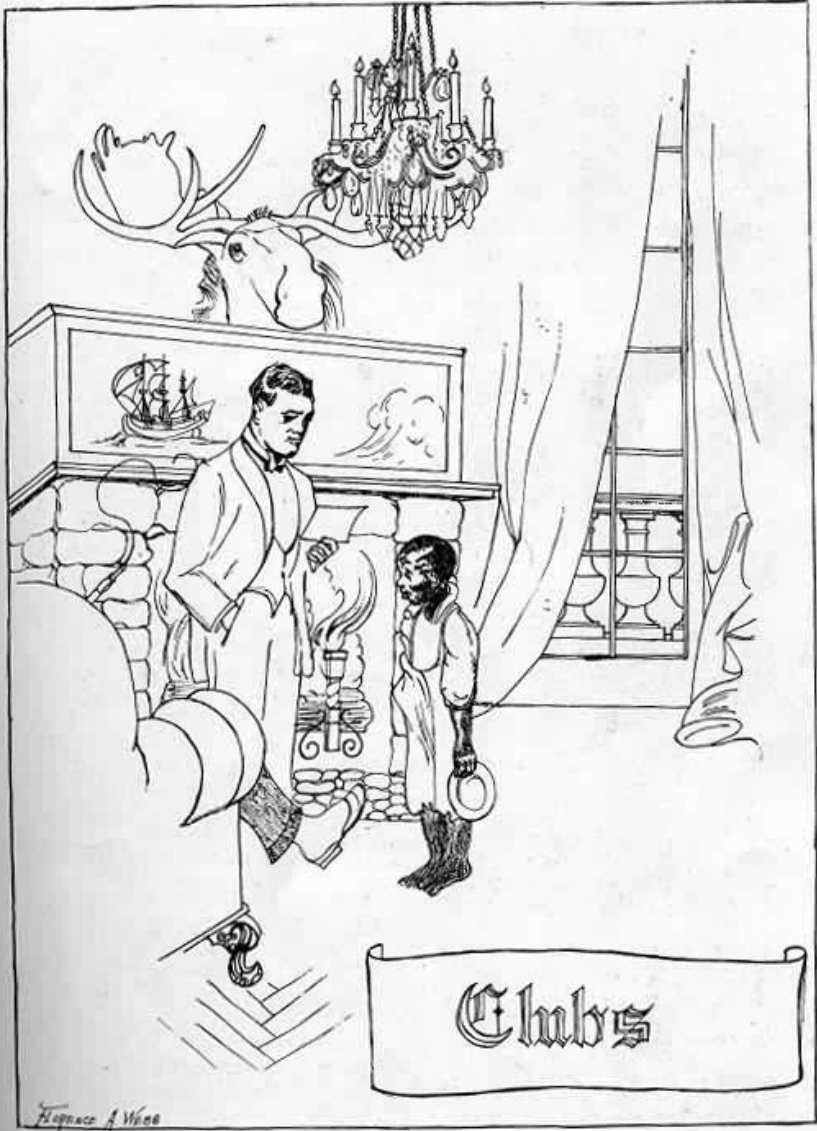


SEVENTH B GRADE

Page Forty

THE PINE CONE

THE PINE CONE



THE PINE CONE

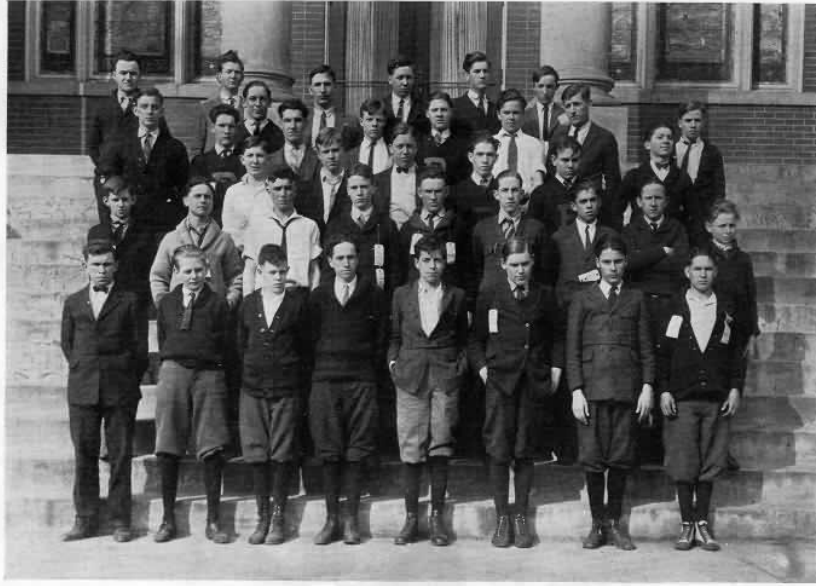
Boys' Club

OFFICERS

LEE ROY WILSON - - - - - *President*
ERNEST PETREY - - - - - *Vice-President*
LOGAN PATTERSON - - - - - *Sec'y-Treas.*

MEMBERSHIP

EDWARD ASHER	DEE JAMES
WARE BOWMAN	JAMES JEFFRIES
JETT BAILEY	JAMES LANE
GEORGE BAKER	BERNICE NOUID
VIRGIL BINGHAM	ERNEST PETREY
FAULKNER BIRD	LOGAN PATTERSON
RAY BOWMAN	WILLIAM RAMSEY
SOL CARNES	LEONARD SLUSHER
JIM CARNES	FLEM SMITH
DONALD CAWTHORNE	EARL STEELEY
DAVID EARL	EDWARD SMITH
WALTER ELLIOTT	JAMES SMITH
THOMAS FOLEY	PAUL STRUNK
ROY GIBSON	MORRIS SCOTT
BEN HALE GOLDEN	EDWIN SMITH
PAUL GREENE	BILLIE VANBEVER
JAMES GILBERT	EDWARD WILSON
ROBERT HELTON	WALTER WOOLUM
RALPH HOLZORTH	LEE ROY WILSON
OSCAR ISAACS	



BOYS' HI CLUB

THE PINE CONE

P. H. S. Boys' Club

The Boys' Club of P. H. S. was organized in the spring of 1924 in order to create a better fellowship among the boys of the High School; and, to establish a working-unit, by which more things may be accomplished.

The following officers were elected at the first meeting of the club:—Roy Gibson, president; Lee Roy Wilson, vice-president; Delmas Cawthorne, secretary; Dee James, treasurer. At the beginning of the school year of 1924-25, the club elected these officers:—Lee Roy Wilson, president; Ernest Petrey, vice-president; Logan Patterson, secretary; Roy Gibson, treasurer. These officers have filled their positions very faithfully and have done much to uphold the standard of the club.

The meetings of the club are very entertaining as well as instructive. The first part of the meetings are planned on the banquet style, followed by very beneficial talks by prominent men of the town. These talks were made by such men as:—Senator W. L. Moss, Mr. I. J. Porter, Mr. N. R. Patterson, and Mr. Herndon Evans. Each meeting is held in the social hall of some church.

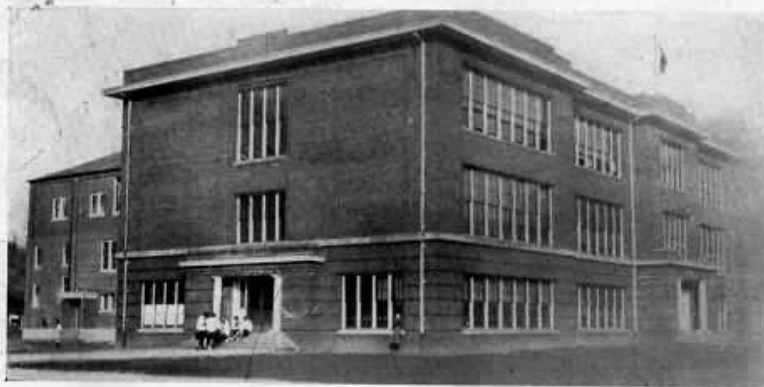
The club is progressing by leaps and bounds, and is one of the most lively organizations in the school. Great accomplishments are expected of it in the future.

—R.G.

Hi-Y Conference

This year our shining light was the fact that we entertained so successfully at the Boys' Hi-Y Conference. We gave a banquet where we heard several out of town speakers, Mr. H. E. Taylor, of Berea and Mr. Wallace, of Centre College. We also enjoyed some wonderful singing by Mr. Ramsey and Mr. Gaddie, both of our town.

There were about sixty out of town delegates at the conference and we furnished about sixty ourselves. We consider this conference the best piece of work we have done and hope to do some more as worthy some time in the near future.



PINEVILLE HIGH



SENIOR GIRLS' CLUB (FIRST MEETING)

Girls' Club

COLORS: - - - - - *Blue and Gold*

OFFICERS

JANE RAMSEY - - - - -		<i>President</i>
KATHERINE DAVIS - - - - -		<i>Vice-President</i>
GRACE STONE - - - - -		<i>Secretary</i>
HAZEL BYERLY - - - - -		<i>Treasurer</i>
JANE RAMSEY, KATHERINE DAVIS, <i>Executive Council</i>		
GRACE STONE	MARY COLLIER	MARIE BYERLY
HAZEL BYERLY	LOUISE ASHER	FRANCES EARL

HISTORY

Although one of the youngest organizations in High School, the Girls' Club has been so far one of the most successful. The last of September was truly a time to be remembered by all the girls in High School,—for it was then that a committee from the Sophomore and the Junior classes met with the superintendent of the school and drew up plans for organizing a Girls' Club among the girls of the upper three classes. Three representatives were then selected by the classes, and these nine girls met, elected officers and drew a constitution. At this meeting Miss Myrtle McCracken was chosen Advisor of the club. The following decisions were made:

To attain membership a girl need only be passing in three-fourths of her work and to be willing to submit to the initiation rites.

An Executive Council was to be chosen by the president consisting of the officers and four girls, appointed by her from the charter members.

That the new members should be asked in groups of fifteen.

That the first fifteen girls, their names being voted upon and approved by the charter member should be invited to attend opening banquet held early in October.

Thus the Girls' Club, the idea of which had been in the minds of some of the girls for the past two years—became a realized dream. The aim of this organization is to back all enterprises that are the best for the school, to promote fellowship among the girls, and to be loyal, true students of the Pineville High School, which will mean more experience for the girls, broader fields to work in, and opens the door to greater accomplishments and achievements than they have hitherto known.

By H.B.



SENIOR HIGH SCHOOL GIRLS' CLUB

THE PINE CONE



Kappa Phi Club

COLORS: *Purple and Gold*

MOTTO: *"Veritas vincit."*

FLOWER: *Rhododendron*

OFFICERS

KATHERINE MIRACLE	- - - - -	<i>President</i>
MARIE WADE	- - - - -	<i>Vice-President</i>
RAYMEL GADDIE	- - - - -	<i>Secretary</i>
FRANCES MORGAN	- - - - -	<i>Treasurer</i>
LOUISE BOWMAN	- - - - -	<i>Reporter</i>
Mrs. A. B. RAY	- - - - -	<i>Counselor</i>

MEMBERSHIP

- | | |
|------------------|-------------------|
| ELIZABETH BOWMAN | FRANCES MORGAN |
| LOUISE BOWMAN | KATHERINE MIRACLE |
| BERNADINE CULTON | GENEVA PURSIFUL |
| RAYMEL GADDIE | RUTH RUFY |
| ELIZABETH GRAGG | RUBY STONE |
| OCTAVIA HOSKINS | MARGARET WHITAKER |
| MABEL HOSKINS | MARIE WADE |

Aim:—The aim of the Kappa Phi Club is to promote scholarship, friendship, good sportsmanship among the girls of Pineville High School.

THE PINE CONE



Junior High School Girls' Club

COLORS: *Blue and White*

MOTTO: *"Push"*

FLOWER: *Bluebell*

OFFICERS

LINDA PATTERSON - - - - - *President*
 RAE ASHER - - - - - *Vice-President*
 MARY WOODS - - - - - *Secretary*
 WILLIE JEAN HODGES - - - - - *Treasurer*

MEMBERSHIP

RAE ASHER	MAJEL KELLY
NELLE CARD	KATHERINE MATTHIS
LELA CORNN	LINDA PATTERSON
SYLVIA EUSTER	ROSE PEARCE
RUBY EUSTER	BOYDIE RICE
DOROTHY GALLOWAY	MARY ROLLINS
HELEN GEYER	HELEN VANBEVER
WILLIE JEAN HODGES	MARY BUFORD WOOD

THE PINE CONE



Dramatic Club

COLORS: *Yellow and Black*

MOTTO: "*Ipse Nosce*"

FLOWER: *Jonquil*

OFFICERS

GRACE STONE - - - - - *President*
 GYPSY WILSON - - - - - *Secretary*

MEMBERSHIP

VARILLA ASHER	SOPHIA GILBERT	JANE RAMSEY
HAZEL BYERLY	OCTAVIA HOSKINS	GRACE STONE
JAMES CAWTHORNE	MABEL HOSKINS	GYPSY WILSON
ALTA DUCKETT	ADA HOWARD	ETHEL WOOD
HELEN GEYER	EARL KIRK	LEE ROY WILSON
LOUISE GALLOWAY	ROBERTA McDONALD	MARIE WADE
	MYRTLE PRATER	

Little has been achieved in past years in this department as compared with the progress made this year. Not until this year was the class formed into a society, the success of the chapel exercises has been greatly due to the co-operation of the expression students. Very little progress could be made however toward having plays until the latter part of the year because of the lack of stage equipment. Nevertheless through the persistent efforts of Mr. Jones and Miss McCracken (director of the expression department) necessary equipment was procured shortly before the staging of the "Fun Revue."

By its helpfulness to, and its co-operation with, it has proven a great attribute to the school, and we are hoping to do even greater things in the future.

THE PINE CONE



Pineville Fun Revue

The first school play to be held in the auditorium and the first play to have as an added attraction the new scenery, was the "Pineville Fun Revue"—a "Musical Grouch Cure." The play was voted to be one of great success from the time the curtains parted until they closed. Few who saw the play will ever forget the fun the kiddies had at the circus hearing Lee Roy Wilson's ballyhoo and seeing Logan Patterson perform real tricks. Nor will they forget the special numbers of Acts II, III, and IV, and the laughs of Act V. For it is again here that Lee Roy Wilson as the preacher and Logan Patterson as the villainous bootlegger, intrigue the audience. These are however just a few stars from a great constellation. The picture above is that of the Cleopatra Group—one of the most outstanding features of Act I. May we have more and more "Pineville Fun Revues!"

THE PINE CONE



Music Department

MEMBERSHIP

ROBERTA ATKINS
MARTHA ATKINS
MILDRED BAILEY
MARY GEORGE BARLOW
MRS. F. L. BYRON
NELLE CARD
SIDNEY CHAPPELL
MURIEL CHAPPELL
ELEANOR DAVIS
KATHERINE DAVIS
HESTER EUSTER
LOUISE GALLOWAY
MADELINE GOLDEN

LAURA GREENE
MAGGIE HAMM
WILLIE JEAN HODGES
HENRIAN HOWARD
LUCILLE KELLY
ROBERTA McDONALD
MARY BRUCE PITMAN
SARA MOSS PHILLIPS
MERCEDES PURSIFUL
MARY ROLLINS
LILLIAN THOMPSON
ELIZABETH VANBEVER
BERNICE WELLER

THE PINE CONE

FOOTBALL



Review Football Season of 1924

To summarize the success of the 1924 season:—A high morale resulting in an unselfish unified spirit; hard conscientious work on the practice field; the old-time consistent Pineville fight; a real and enthusiastic spirit of backing throughout the whole school,—these were the things that made the 1924 season an undefeated one of brilliant success, wherein we captured the undisputed championship of Southeastern Kentucky for the fourth consecutive time, rolling up a total score of 277 to the opponents 21. Of these points 12 were made by LaFollette, a Tennessee team, 6 by Big Stone Gap, Virginia, and 3 by the Blue Devils of Lexington, Kentucky, the only Kentucky team to score on us. Our goal line was uncrossed by a Kentucky team.

The season opened with 59 to 6 win over Big Stone Gap, in which most all of the squad of thirty got a chance to participate. The last year champions of Wise County, Va. did not have a look-in after they antagonized our boys by gaining the first touchdown of the game and season, on a fumbled ball. Williamsburg was the next meal for the Lions, succumbing to a 51 to 0 drubbing the following week. These early games gave the entire squad a chance to show their athletic ability, and resulted in an even development throughout the entire squad, that made itself felt later on in the crucial games when strong reserves were needed.

The Blue Devil (Lexington, Ky. H. S.) struggle will long be remembered. For three quarters the Lions clawed the Devils, clinging tenaciously to a 3 point lead, gained by Captain Jim Carnes' trained toe, only to see the Lexington captain save the day for his host with a similar boot.

Harlan came loaded to snare the Lion in his lair, bringing a nicely drilled outfit of clean sportsmen despite the bitterness of the struggle, 21 to 0 was the result. We are glad to have resumed relations with these natural rivals under such pleasant circumstances.

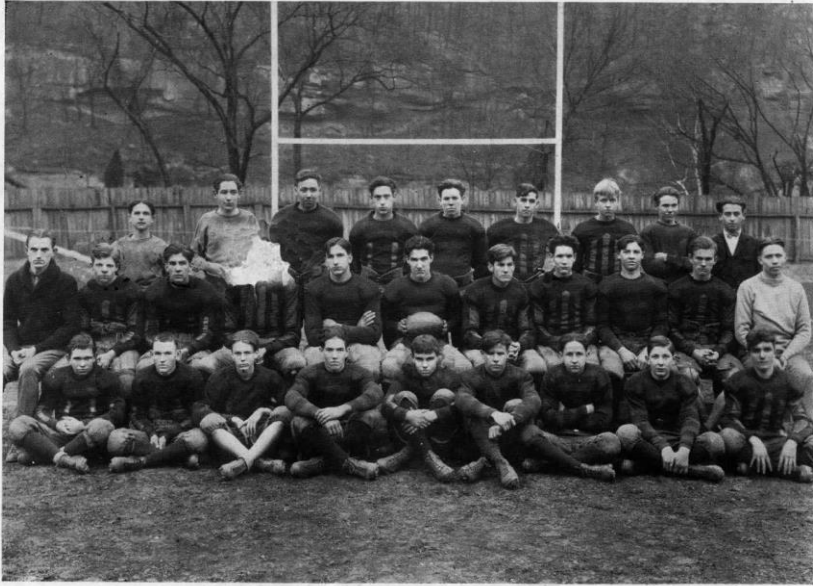
The second team's victory over followed by the beefy LaFollette outfit there, in which game the team probably showed the smoothest working of the season. LaFollette's two touchdowns were due to passes. Winchester, from the Blue Grass, proved a dud, falling 51 to 0 beneath the onslaught of the Lions.

The Cumberland classic at Middlesboro inspired football. James' dizziness, due to an early blow on the head, lost us two touchdowns in the first half; but Dee came back in the last half to reel off runs that meant touchdowns. Each man on the team performed beautifully in this last game, giving all they had.

To the scrubs must go a large share of the glory of this season. About twenty-five fellows worked consistently all fall. The grit and stick-to-it-iveness displayed by the second team was rewarded by a nice development that will see most of them filling the first team vacancies in good style in a year or two. Harkness, Holzworth and George Asher were Seniors who, tho' falling short of the first team because of injuries, ailments, carried on to the end for Pineville High, showing well in several games. Miracle, Don Cawthorne, Bud Smith, Bird, Ramsey, Isaacs, and Baker all are counted on for future seasons.

SEASON'S SUMMARY

Big Stone Gap, Va. 6	Pineville 59
Williamsburg 0	Pineville 51
Lexington 3	Pineville 3
Harlan 0	Pineville 21
Barbourville 0	Pineville 33
LaFollette 12	Pineville 45
Winchester 0	Pineville 51
Middlesboro 0	Pineville 14
Total 21	Total 277



FOOTBALL GROUP

THE PINE CONE



H. W. JOHNSON, ATHLETIC DIRECTOR

Two years ago the Pineville High School was found to be without a Coach, and the country had seemingly been combed for a man that could fill the bill. Finally Mr. Johnson was located and signed to appear on the scene in September, and since that time Pineville has had one of the best Athletic Directors in the state. He has instilled fighting spirit into the boys during this time that will always go down in the memory of Pineville students and supporters. The team was undefeated during the nineteen twenty-four season, largely through the untiring efforts of his leadership. Too much credit can't be given Coach Johnson for the much improved standard of athletics since his taking it over in P. H. S.

JAMES CARNES, CAPTAIN

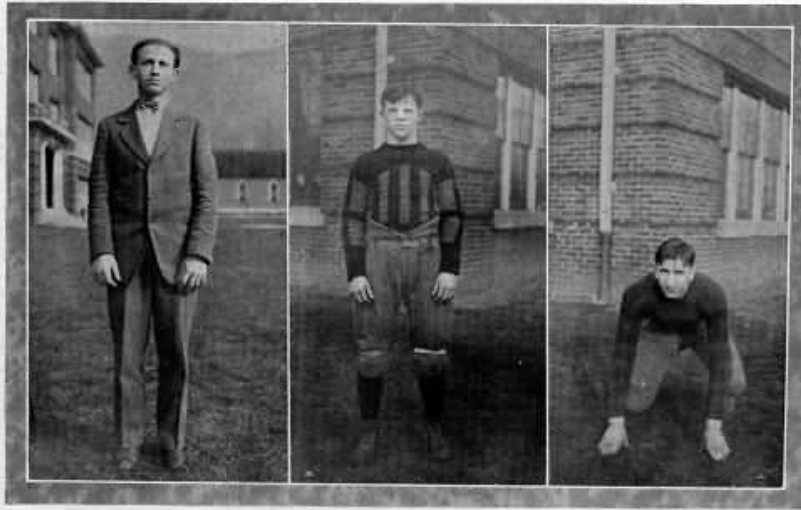
(JIM)

Captain Jim Carnes, our example of determined steady play, consistent work and good fellowship did much to inspire the splendid morale that resulted in an undefeated season. Besides rating the best tackle in these parts, he this year blossomed into an exceptionally good kicker, his field goal in the Lexington game resulting in the deadlock that will long be remembered. Another year should rate him the best tackle in the state.

L. C. HENDERSON, ASST. COACH

Loyal, hard-working, energetic, and thoroughly unselfish in his efforts, Mr. Henderson volunteered his services to drill the "scrubs" and if necessary to don the uniform himself and scrimmage the first-stringers in order to make a better team of them. Much credit is due him for the successful season of the Mountain Lions.

THE PINE CONE



CHARLEY DEAN, MANAGER

Charley is the first real manager the Pineville football team has ever had, and we believe he has set a mark for future managers to shoot at. When some work was to be done the Coach and the team always felt perfectly free to call upon their manager 'cause they knew it would be well taken care of. May the future teams of Pineville High School be as fortunate as our last one and have just such a manager.

DAVID EARL

(DAVE, DUCK, BUNNY)

Early setbacks did not keep Dave from enjoying the best season of a sparkling career. His slippery, speedy, scintillating runs and double threat ability were a constant terror to all opponents, and resulted in a goodly share of his team's points. As all-state selection this year, he should be the outstanding back in the state another year.

LEE ROY WILSON

(BIG BOY)

For three seasons Big Boy's bulk has repulsed the attack on the middle of our line. His supreme conquest came when he taught those wayward feet of his to sail the ball over the goal line on the kick-off. Another sterling example of the old unselfish "give all for Pineville spirit" that it will be hard to replace.

THE PINE CONE



FLEM SMITH
(FLEMING)

Everybody will miss "gallopin'" Flem when the next season rolls around, and the premier end of Pineville football leaves a big gap in the ranks. Quite determined dogged, he will be a spirited example of the old Pineville Hi fightin' spirit for generations to come. The few plays that circled his end did so over his prostrate body.

RAY GRIGGS
(DADDY)

"Young Buck's quiet and determined gameness plugged the big gap at center that ineligibility opened up. For all his great handicap in weight, Ray came through in his Senior year after several years on the seconds, to carry on the family tradition to the great delight of fans and coaches.

DELMAS CAWTHORNE
(DEB)

Deb started and finished his second season with a spirit of unselfish determination, that earned him a regular and secure position in the backfield. His squirming, twisting smashes into the line were pretty to behold, and won him much favorable comment. Next year we look for big things from this mainstay.

THE PINE CONE



ROY GIBSON

(GIBBY)

The embodiment of the self discipline, unselfishness, modesty, and earnestness that makes great athletes out of the mediocre material that coming few and far between are a joy to any coach. Angling into the air to receive a pass on his finger tips, or driving the opponents back with his long spirals, Roy was an indispensable part of our team. Another brilliant season awaits this personification of true Pineville Hi spirit.

DEE JAMES

(DEE)

Absolutely a green man at the game in 1923, Dee became one of the finds of the year, by settling the quarterback problem in an unhoped for fashion. His cool, snappy judgment invigorated his teammates. His throwing and interception of passes will be oft remembered, as will his bursts of speed in the Middlesboro game, which qualify him as one of Pineville's "Four Horsemen" in the coming season.

ERNEST PETREY

(PETE)

Another product of consistent effort was Pete. Already formed as a scrub for his 1923 world's record for drop-kicks after touch-down. Pete set his determined mind on developing a triple threat man, which resulted in this remark from the Middlesboro coach, after the Thanksgiving battle: "We got Earl, but you had one just as good to take his place."

THE PINE CONE



JAMES LANE

(JIM)

A late find of the 1923 campaign, Jim backed up the defensive line ably, getting more tackles than any other man. His speed always carried him into every opening to spill the attack before it gained impetus; it also enabled him to run nice interference on the offensive. His two more seasons are full of rich promise.

EARL KIRK

(CUTIE)

Absolutely green at the game, but possessed of a brawny physique and great willingness, Earl budded into a battering ram that was a terror to all opponents. After gaining the rudiments of the defensive tackle position, he made an able partner for Captain Jim. Another season should see him develop into a player that Pineville will long remember.

SOL CARNES

(RED)

The third member of this illustrious family carried through as was naturally expected of such stock. Rattle of signals, snap of ball, a crash into the center of the line, a pile of limbs and bodies, and untangling and there at the bottom of the heap always lay Solomon in all the glory of his brilliant shock of hair. We predict that in the next three years his brilliance will ever increase.



Review of Basketball Season

Basketball, unlike football, is a game that requires some years to acquire the technique, and cannot be mastered in a season or two. Winning teams come from communities where the youngsters have grown up with basketballs in their arms, where barrel hoops sprout on every barn. So in the first real basketball season in several years, it is not to be wondered that the Maroon and Gold did not win the district meet, either boys' or girls'. With our new gym—the best in this section of the state, however, with the interest the school is taking in the sport, and with a great development of the green material this past season, we do expect that very thing another season. Furthermore, we look for basketball to reach a place equal to football in Pineville.

The boys' team does not lose a man. Lee Roy Wilson being the only man from the squad thru graduation. The girls' team losing one thru graduation, Jane Ramsey. All of which speaks well for next season's success for both teams. In the first season both teams might have sought easier opposition, but realizing that the greater experience comes from the best, we met the best teams of Southeastern Kentucky and Tennessee. Considering such teams as LaFollette, McCallie of Chattanooga, London, and Williamsburg for the boys' and London, Manchester, Williamsburg, and Barbourville Baptist for the girls', the showing of the Maroon and Gold teams in their initial year is quite creditable.

The high spots in the boys' season were as follows: a 22 to 20 victory over LaFollette; a 31 to 22 defeat at the hands of McCallie, and 23 to 32 defeat by London, the district champions. The girls in going to the finals at the tournament, defeating Brodhead 20 to 5, and Manchester 6 to 2, only to lose to Williamsburg in the finals 8 to 5.

SUMMARY

Boys'	Girls'
B. B. I. 10—Pineville.... 21	B. B. I. 11—Pineville.... 5
Union High 15—Pineville.... 22	Union College..... 20—Pineville.... 3
Williamsburg 18—Pineville.... 22	Barbourville Hi.... 12—Pineville.... 6
Corbin 20—Pineville.... 47	London 14—Pineville.... 5
London 48—Pineville.... 8	Corbin 9—Pineville.... 16
B. B. L. 29—Pineville.... 21	B. B. L. 25—Pineville.... 4
La Follette 20—Pineville.... 22	Union College..... 17—Pineville.... 8
McCallie 31—Pineville.... 22	Barbourville Hi.... 16—Pineville.... 13
Union High 23—Pineville.... 15	London 10—Pineville.... 5
London 33—Pineville.... 23	
TOURNAMENT	TOURNAMENT
Manchester 12—Pineville.... 28	Brodhead 5—Pineville.... 20
London 33—Pineville.... 10	Manchester 2—Pineville.... 6
	Williamsburg 8—Pineville.... 5
Total 292	Total 147
261	96

THE PINE CONE

Basketball Groups



BOYS' SQUAD



GIRLS' SQUAD

THE PINE CONE



ROY GIBSON

With an extremely limited experience, Roy bloomed out to become an excellent pivot man for the offense. No opponent has conquered him in the tip off. His shooting was the most consistent of the squad, and pretty to watch. As next season's leader, he will be ideal because of his exemplary spirit, consistent play and high popularity.

DEE JAMES, CAPTAIN

Dee was about the only man of any experience who answered the basketball call in the new gym. He clearly showed that he had learned the rudiments of the game at Berea College and was chosen captain. He demonstrated the choice well founded, bearing a large share of the offensive brunt. Having the great natural asset of speed, he should enjoy a great season next year.

PAUL GREENE, MANAGER

In Paul the Coach had one of the best Managers he could possibly have found in the entire school. His Motto is: "Do a thing well or not at all." And he is always busy.

THE PINE CONE



JIM CARNES

Jim held down the back guard position like a veteran although with very little previous experience in the sport. His ever present arms covering a wide territory, intercepted passes to stop many a sally single-handed. Next year should see Jim the best back guard in this section.

DAVID EARL

The injury sustained in the Middlesboro football game delayed Dave's debut in basketball; but the middle of the season saw him step in there as a regular, and his everlasting scrap added much to the team. Already a nice dribbler, he should next year become the outstanding running guard in this section.

TIP HAMMONS

Tip was the greenest man on the squad, never having a ball in his hands before the season opened, a natural quickness and coordination of muscles however enabled him to take his place at guard from the first game. The result should be a mighty valuable player in the next two seasons.

THE PINE CONE



BEN GOLDEN

Curly got the habit of tossing in the loopers quite regularly in the latter part of the season. The McCallie game assured him a regular berth. Ben has a natural eye for the basket and should develop into a leading player in the two seasons he has to go.

JAMES SMITH

Bud, the freshman of the team, earned his letter by a natural cleverness and eye for the basket, though handicapped in size. Very new to the game, also his rapid progress of the past season should turn him into a master in the three seasons that remain.

THE PINE CONE



GRACE STONE

As back guard Grace outplayed all others in the district tournament held at Barbourville and by rights should have been given a place on the All-Southeastern Kentucky Team. She is to captain the team next year—which assures every one that our team will be properly led, and many victories are expected. She is always in the game giving her best from the first whistle until the last,—after all the thing that counts most.

JANE RAMSEY, CAPTAIN

Jane, as captain of the team has made a good one. She is always in the thick of the fight, and doing her part to bring about the downfall of the approaching enemy. We regret very much to lose Jane through graduation this year as she is one of our most reliable students in every respect. Her position will be hard to fill not only on the team but in every school activity. She leaves us with the sincere wish of everyone, both faculty and student body.

MAE HOLLINGSWORTH

Mae was late in getting out for basketball this year but once she did get out every one had to sit up and take notice. When she had gotten into the system she more than once proved a terror for the opposing guards. She was high point member for the team, and her playing will long be remembered by the students of P. H. S. She made the All-Southeastern Kentucky Team as forward after the district tournament and rightly deserved it. We are glad Mae will be with us another year, and we predict a real season for her. She is a "scraper" to the finish.

THE PINE CONE



MARIE HOWARD

As a forward Marie is hard to beat. She is one of our most reliable players, and could always be counted upon to do her part, and that was a big one. Small in stature is Marie, but she overcomes all this with her fight and endurance. We are expecting big things from her another year, and feel sure she will blossom forth with one more season of experience.

LOUISE ASHER

Louise was the only member of the squad to play every game during the season which speaks for itself. She played a good game at center and was one of the main cogs in the offense as well as the defense. With another year's experience we believe she will rate with the best in this section. She improved as the season progressed which is a good indication that in the next year's work she will bear watching by the opposing teams. We expect lots from her in the future.

MURIEL CHAPPELL

Muriel was the handy andy girl of the team as she played every position on the team, and played it creditably. We had in Muriel a girl that could fill in wherever needed and not weaken the team which is a lot more than a number of teams can say. We expect her to star for us another year, because one with her determination is bound to be heard from.

Review Track Season

Track in Pineville High School had suffered a lay off since the very successful season of 1921, when Brandenburg & Co. smashed records in this section. The fact that the competition in this section had been scarce in this sport heretofore, accounted for the lay off it suffered. The spring of 1924 arrived with no ball in or near Pineville. The Athletic Association suggested that track would go much better financially and give much more publicity to a school this size, put in a one-fifth mile track around the football gridiron, with a 120 yard straightway. It is the plan to cinder this track this spring, making it without doubt one of the best high school meets in the state.

Middlesboro with an experienced team led by Chesney, who captured the high jump at the state meet, was our main competition in this section. In a triangular meet on April 26th, between Middlesboro, Baptist Institute and Pineville, Middlesboro won 67 points against our 50 again in the Southeastern Kentucky meet, which the Pineville A. A. sponsored May 17th, they turned out victors, earning 67 points to Pineville's 52, Barbourville garnered 1 point.

The annual field day displayed much talent which portends great things for this sport in the coming seasons, when all the sports in the Pineville High School will win their way to the same high place.

FIELD DAY AND INTER-CLASS ACTIVITIES

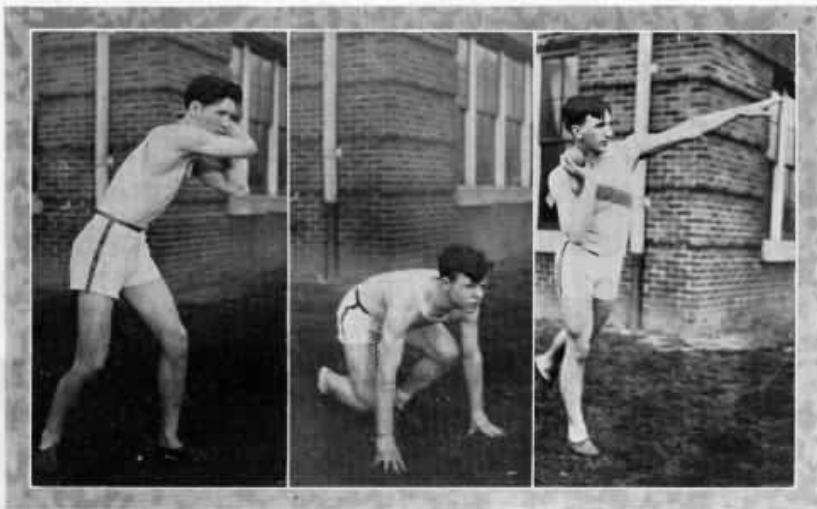
To create an interest in athletics, to aid athletic development, and to uncover "dark horse" material has been the aim of the athletic department in sponsoring inter-class events.

A field day was held late in May. It is intended to make this affair an annual event, the last big athletic event of the school year, with all the school boys and girls participating. Banners were awarded to the class winners and ribbons to the first three place winners in each event. The 9b grade won the banner, but 7b was only one-half point behind, while 5a won the class banner. There was no competition in class A (grades 12, 11, 10). Golden and Hollingsworth were the high scorers among the boys and girls respectively.

Inter-class basketball created great interest in the new sport and has uncovered much new material. At the present writing a champion has not been ascertained.

Intra-mural athletics give everyone an equal chance. Most every student is interested now in some branch of sport.

THE PINE CONE



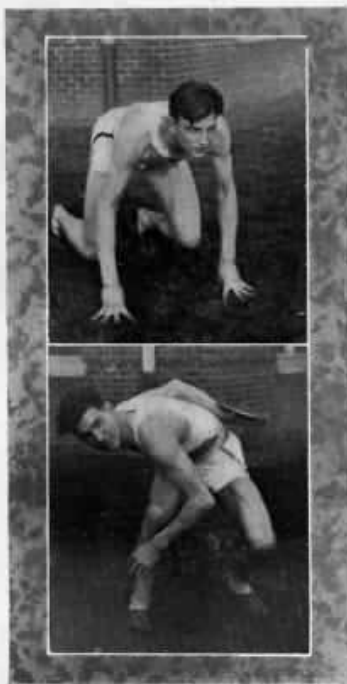
Dee is not to be called a one sided athlete, as he has proven to every follower. He is one of our best track men.

Dave is much faster on the track than anyone had dreamed of him being. Always in good physical Dave Earl condition and fighting to the last degree.

Big Boy has an arm like a giant and can put the shot up with the best of them in the state. He took third place in the state meet held in Lexington last year.

Roy is one of our steadiest athletes and is right out there doing his part in track. He will be a whizz in the future. Just watch him.

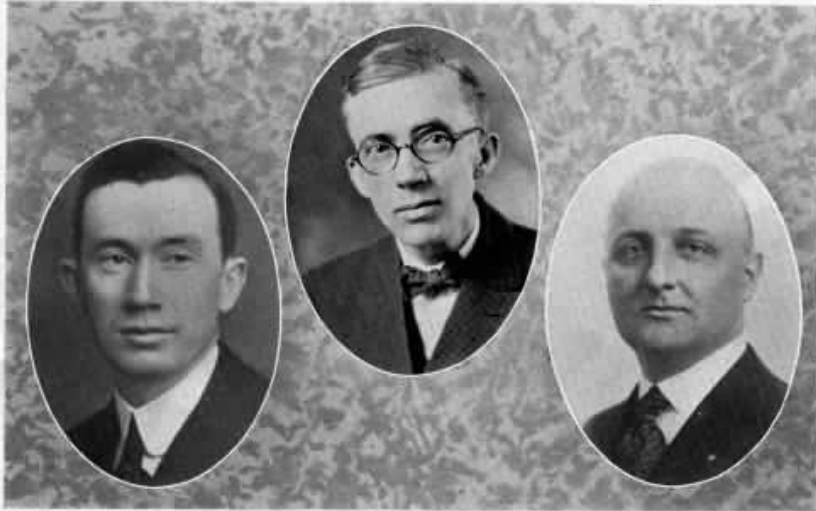
Jim can throw the discus almost like it was a baseball. He is a coming track man in Kentucky track events. Already in other lines of sport.





WEARERS OF THE "P"

THE PINE CONE



Pineville Athletic Association

Since its founding in 1920, this association has had more to do with Pineville High athletics than any other organization. Without the aid of this group of altruistic business men, our present success and wide scope of athletic endeavor would have been impossible. The enthusiastic attitude of the towns people toward athletics, the splendid athletic field, the nice array of equipment, entire financial care of our athletics; these are some of the accomplishments and burdens assumed by this association.

We doubt if many other schools in the country can show a financial system in their athletics, that works out so in harmony all around. This year's officers, Mr. R. W. Watt, president, and Mr. J. T. Bradley, secretary-treasurer, have worked unceasingly to place our athletics upon a sound and paying basis giving unreservedly of their time for the benefit of the youth of Pineville.

Mr. George H. Marting gave much of his time and knowledge during the fall months, acting as an advisory football Coach. Himself a former successful player and coach, and a deep student of the game, his influence on Pineville football since its beginning has been great. A goodly share of the football success of Pineville High is due to the influence of this modest gentleman, our "silent partner."

LIFE MEMBERSHIP OF ASSOCIATION

R. M. WATT, *President* - - - - - J. T. BRADLEY, *Sec'y-Treas.*

- | | | | |
|-------------------|-------------------|--------------------|-----------------|
| RICE JOHNSON | G. H. MARTING | R. R. ATKINS | FRANK GIBSON |
| ED SAMUELS | N. T. ARNETT | PRESLEY ATKINS | CHAS. GRAGG |
| R. I. CAWTHORNE | WHITE MOSS | HARRY ISAACS | A. B. CULTON |
| M. D. BELL | RAY MOSS | T. J. ASHER | PAT CATON |
| DR. MASON COMBS | M. J. MOSS, JR. | DR. M. BRANDENBURG | J. M. GREENE |
| GEORGE REESE, SR. | DR. TILMAN RAMSEY | FRED EVANS | ED SETTLE |
| IRA J. PORTER | R. W. DAVIS | N. R. PATTERSON | W. R. MORRISON |
| JOE THOMAS | FRED GRAHAM | BEN LOGAN | JUDGE WM. AYRES |
| B. W. SHERRILL | HEADLEY CARD, SR. | B. F. JOHNSTON | W. T. DAVIS |
| BOB LOWE | HEADLEY CARD, JR. | RICHARD BARKER | R. W. LIDDLE |
| HENRY GIBSON | GEORGE TINLEY | J. S. CHAPPELL | W. F. JONES |
| JIM PHILLIPS | DR. J. G. FOLEY | | |

THE PINE CONE

Publication Staff

Maroon and Gold

- JANE RAMSEY - - - - - *Editor*
- MARY COLLIER - - - - - *Asst. Editor*
- LEE ROY WILSON - - - - - *Manager*
- FLEM SMITH - - - - - *Asst. Mgr.*
- LEE ROY WILSON - - - - - *Athletic Editor*
- BERNICE ALLISON - - - - - *Social Editor*

Editorial Staff

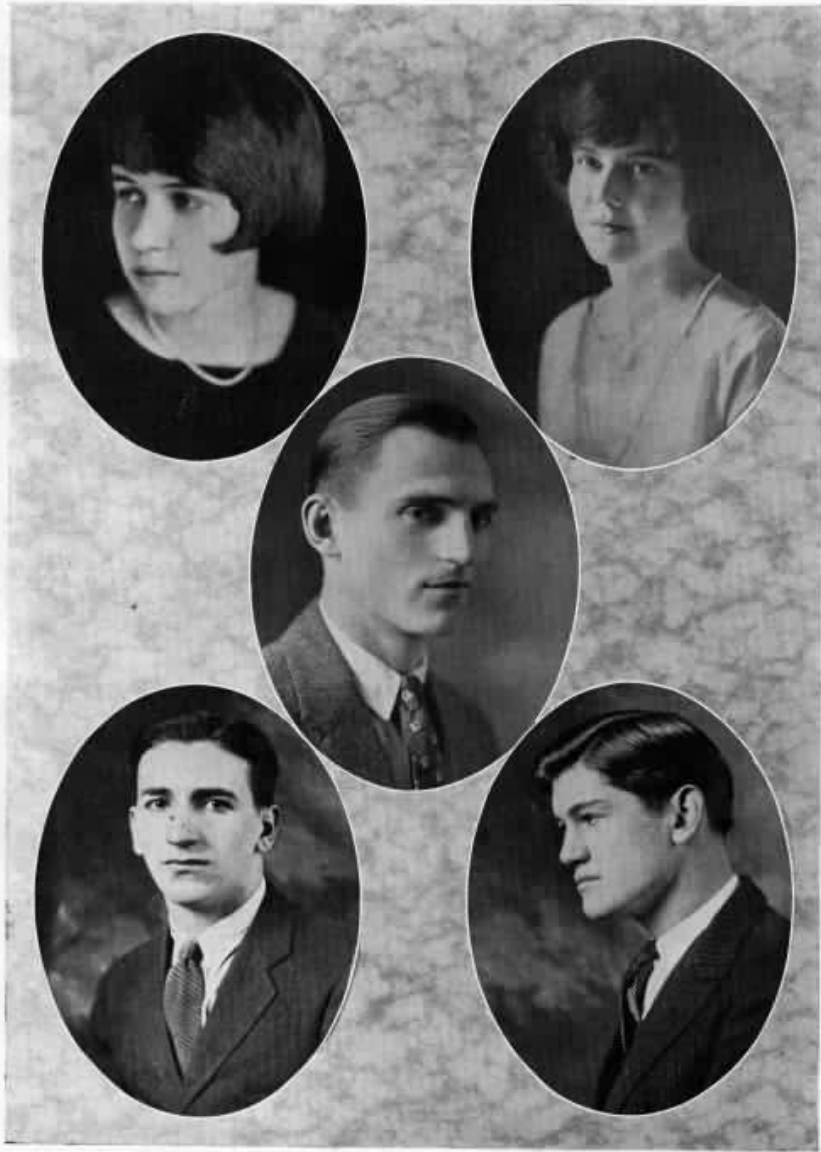
- JANE RAMSEY - - - - - *Editor*
- MARY COLLIER - - - - - *Asst. Editor*
- LEE ROY WILSON - - - - - *Business Mgr.*
- FLEM SMITH - - - - - *Asst. Bus. Mgr.*
- L. C. HENDERSON - - - - - *Faculty Advisor*

Pineville High School Varsity Club

The Varsity Club of Pineville High School is the oldest organization in the High School. The Varsity Club is composed of the Letter Men of the High School. Of late the club has been more exclusive and many important by-laws have been placed on the statute books. The club is one of the most active in the High School and does not contain one "dead head." Much of this year's athletic success may be attributed to the Varsity Club's co-operation with the coach.

—L.R.W.

THE PINE CONE



THE PINE CONE EDITORIAL STAFF

THE PINE CONE

Last Will and Testament of the Class of '25

We, the Senior Class of Pineville High School, in the County of Bell, in the State of Kentucky, United States of America, being of sound mind do publish and declare this to be our last will and testament.

We give and bequeath to the persons herein names, the following degrees of embarrassment, disappointment and thrills:—

- To Sophia Gilbert, Clyde Boston's ability to be silent.
- To Mary Lindsay Bradley, Lee Roy's chewing gum.
- To Roy Gibson, George's ability to study.
- To David Earl, Eula's good humor.
- To Katherine Davis, Bernice Allison's mathematical ability.
- To Grace Stone, Edward Smith's knowledge of Shakespeare.
- To Louise Asher, Ralph's scalps (as Miss McCracken sees them).
- To Jim Carnes, Mary Collier's teasing eyes.
- To Delmas Cawthorne, Ross Harkness' "chestnut brown hair."
- To Edna Greene, Jane's curiosity.
- To John Ware Bowman, Edgar Dean's ambition.
- To Charlie Dean, Ray Griggs' ability to throw paper wads.
- To Mae Broughton, Flem's bray.

In witness hereof, we have hereunto set our hand and seal at Pineville High School, Pineville, Kentucky, this the fifteenth day of May, A.D., 1925.

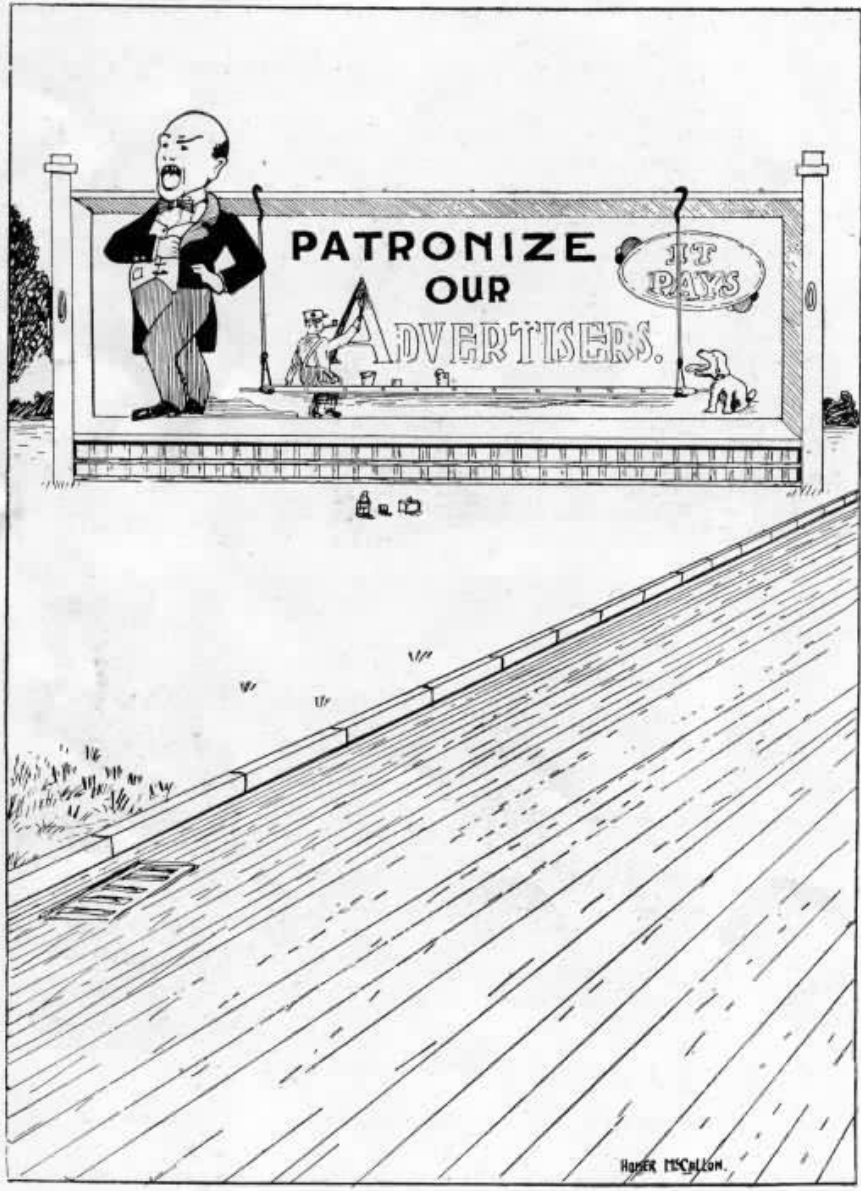
(Signed) SENIOR CLASS OF '25.

Class Prophecy

Looking into the future twenty years from now we see the class of twenty-five engaged in several occupations:

- | | | |
|-----------------|-----------|--------------------------------------|
| LEE ROY WILSON | - - - - - | - A world famous lawyer |
| EDGAR DEAN | - - - - - | - A teacher of mathematics |
| MARY COLLIER | - - - - - | - Happy though married |
| RALPH HOLZWORTH | - - - - - | - A chemistry professor |
| JANE RAMSEY | - - - - - | - In Congress |
| ROSS HARKNESS | - - - - - | - A famous historian |
| FLEM SMITH | - - - - - | - Athletic director at Centre |
| GEORGE ASHER | - - - - - | - A traveling salesman |
| EULA VICARS | - - - - - | - Athletic instructor at Y. W. C. A. |
| EDWARD SMITH | - - - - - | - A noted scientist |
| CLYDE BOSTON | - - - - - | - A noted writer |
| RAY GRIGGS | - - - - - | - Mgr. of Straight Creek Coal Co. |
| BERNICE ALLISON | - - - - - | - A newspaper editor in N. Y. |

THE PINE CONE



THE PINE CONE

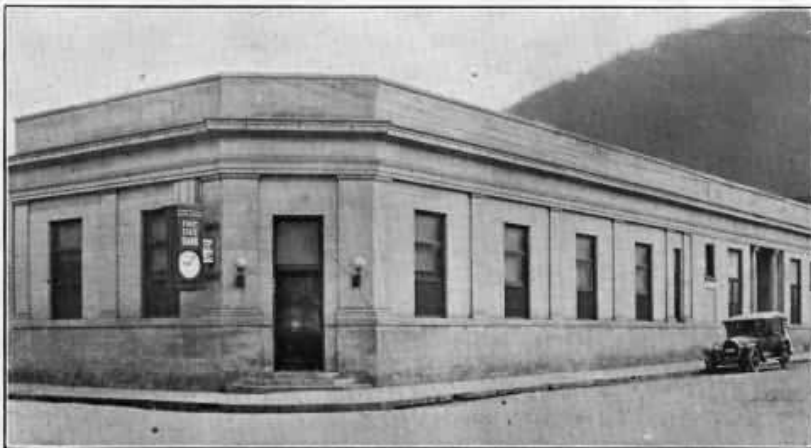


**Boone Trail
SERVICE
STATION**

Tourist Information,
Up-to-Date Advice
on all Roads and
Points of Interest.

HEADQUARTERS FOR
SIBERLING TIRES

"At Your Service"



FIRST STATE BANK

Commercial Banking — Savings Accounts — Time Deposits
TRUST DEPARTMENT — SAFETY DEPOSIT BOXES — SCHOOL SAVINGS

THE PINE CONE

Pineville Steam Laundry

BOTH PHONES 25

*They do Cleaning and Pressing
the Benzol Way*

PAIGE

JEWETT

Rex Motor Co.

ALSO DISTRIBUTORS OF

OVERLAND
AND
WILLYS KNIGHT
MOTOR CARS



PINEVILLE -- KENTUCKY

LET NINETEEN AND
TWENTY-FIVE BE—

*“Nineteen and Plenty
Five” for you,*

By buying your Hats,
Graduation Gifts, Dress
Materials and Hose at—

**Miss Osborne's
Shop**

Everything bought in
New York and Personally
Selected.

THE PINE CONE

Edison Saved to Succeed

"I had to save before I could begin my life's work" says Edison. "Without money in the bank I could not have succeeded".

Lay the foundation for YOUR future with a bank account.

4% PAID ON SAVINGS DEPOSITS

The Bell National Bank

PINEVILLE, KENTUCKY

*Insure in Sure Insurance
with the*

**PINEVILLE
INSURANCE
AGENCY**

GENERAL INSURANCE

Robert D. Asher
MANAGER

CHAS. GRAGG

AT THE

REXALL STORE



Has served your School
Needs—Let him continue
to serve your needs in
Drug Store Lines

THE PINE CONE

COMPLIMENTS OF THE
FLOCOE SWEET SHOPPE

**N. T. Arnett
& Son**

Funeral Directors
and Embalmers
Agency

—
Fresh Cut Flowers



WITH THE COMPLIMENTS
OF

**Phillips & Patterson
Shoe Store**

PINEVILLE KENTUCKY

THE PINE CONE

You get the best
Wear in Hardware

— FROM —

**J. M. GREENE
& SONS**

When looking for Furniture,
Look for the Largest Furniture
Store in Pineville. Complete
line of Rugs, Stoves, Victrolas,
Trunks, Etc.

**Pineville Furniture
Co., Inc.**

THE BARNER STUDIO

FIRST FLOOR MASONIC
TEMPLE

BOTH PHONES 176

Portraits that Please

COMPLIMENTS OF

Pineville Hotel



THE PINE CONE

We can't make all of it—
So we make the best of it.

CHAPIN-SACKS CORPORATION

MANUFACTURERS OF

"The Velvet Kind"

Cream of Ice Creams

Star Store

Complete Outfitters for
the Whole Family

COMPLIMENTS OF

**Virginia Harlan
Coal Corp.**

COMPLIMENTS OF

**POWDER PUFF
BEAUTY PARLOR**

COMPLIMENTS OF

The Gaines Theatre
The Home of Good Photo
Plays

THE SUN PUBLISHING CO.

INCORPORATED

COMMERCIAL PRINTERS

Publishers of THE PINEVILLE SUN

An Independent Newspaper

THE PINE CONE

**Brandenburg
& Gibson**

HARDWARE & HOUSE
FURNISHINGS



COMPLIMENTS OF
**Brock Dry Cleaning
Company**

COMPLIMENTS OF
**Pineville Bottling
Works**

COMPLIMENTS OF
MAMMOTH GARAGE
KIRK PLUMBING COMPANY
BAIRD GROCERY COMPANY
PINEVILLE TAILORING CO.
W. H. COLE
HANLEY GADDIE

COMPLIMENTS OF

Smith-Wilson Drug Co.

THE PINE CONE

Midland Stores Company, Inc.

MASONIC TEMPLE BUILDING
PINEVILLE, KY.

One of Thirty-Three Department Stores

Come where you find what you want
and want what you find

CUMBERLAND PHONE 111

O. L. STANDARD, Pres.

COMPLIMENTS OF

**Russell Barlow Hardware
Company**

INCORPORATED

THE PINE CONE

**Faulkner Garment
Company**

"WOOLTEX" AND "PEGGY
PARIS" COATS
FOR LADIES

"CURLEE" AND "PERSON-
ALITY" CLOTHES
FOR MEN

*"The Store with a
Conscience"*

A RECTOR

DIAMONDS - WATCHES
AND JEWELRY

OPTICAL GOODS
SILVERWARE AND
CLOCKS

MUSICAL
INSTRUMENTS
ETC.

Pineville ❖ Kentucky

UTOTEM GROCERY

THE HOME OF

Chase and Sanborn's Teas and Coffees
Richelied Products
Agents for Holland Butter

Fresh and Cured Meats, Fruits and Vegetables
Pastries and Candies

CALL EARLY FOR PROMPT DELIVERY

Cumberland 63 — PHONES — Tri-State 14

PINEVILLE, KENTUCKY

THE PINE CONE

Gibson-Law Motor Car Co.

INCORPORATED

Agents for Dodge Brothers
Motor Vehicles

Full Line of Parts and Accessories

"Service Our Motto"

PINEVILLE

KENTUCKY

If it is anything in the Drug Line
We Have it.

MAIL ORDERS GIVEN PROMPT ATTENTION

Bingham Drug Company

Efficient, Courteous and Appreciative Drug Store
Service

Tri-State 141

— PHONES —

Home 379

THE PINE CONE

“Strictly a Quality Store”

SOME OF THE MANY MANUFACTURERS
WE REPRESENT

RALSTON PURINA COMPANY
LEHIGH PORTLAND CEMENT CO.
SHERWIN-WILLIAMS CO.
CERTAIN-TEED PRODUCTS CORP.
E. I. DUPONT DE NEMOURS & CO.
KING POWDER COMPANY
ATLAS POWDER COMPANY

BYRLEY SUPPLY COMPANY

OFFICE & MAIN BUILDING
REAR BELL NATIONAL BANK BUILDING

**The Commonwealth
Life Insurance
Company**

Not the Biggest, but the
Best for Pineville People

ED SAMUELS
AGENT

**FORD—FORDSON
and LINCOLN**

AUTHORIZED DEALERS

Only Genuine Ford Parts
Sold Here—Try Our Service
—It is Guaranteed.

Pineville Motor Co.
INCORPORATED