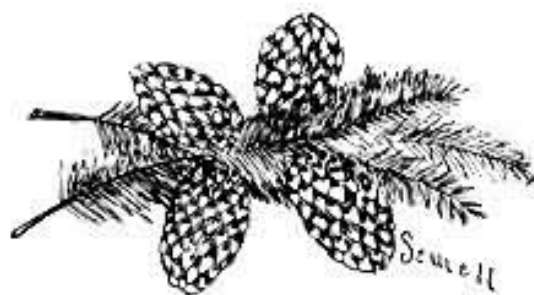


THE PINE CONE
1926

VOLUME IV



PUBLISHED BY
THE SENIOR CLASS
OF THE
PINEVILLE HIGH SCHOOL
PINEVILLE, KENTUCKY



FOREWORD

AS this has been a remarkable and memorable year in our school careers and in our lives, we feel that in future years we will look back upon the past one with many happy thoughts. Therefore we publish this book to portray our school activities and to refresh our memories of our days in P. H. S.

CONTENTS

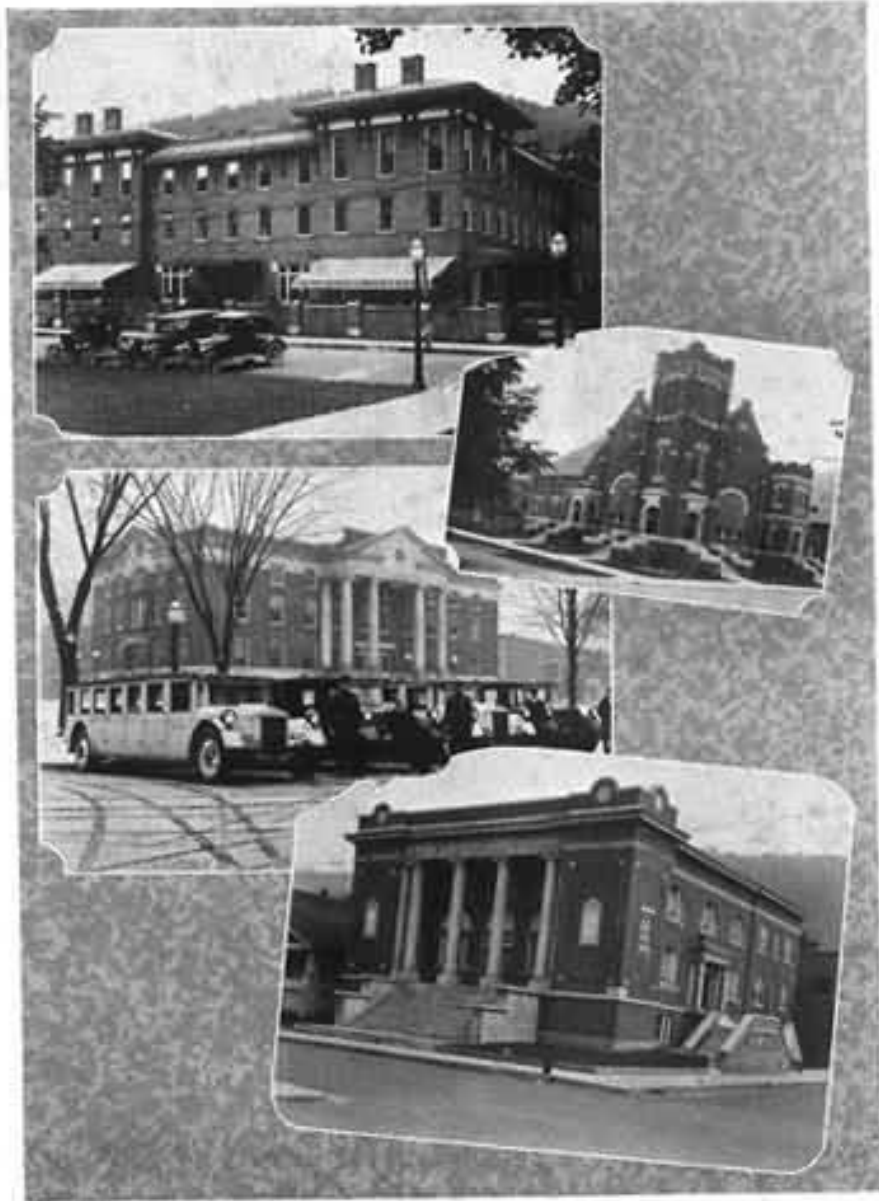
Faculty
Classes
Clubs
Athletics
Features
Publications
Ads





L. C. HENDERSON, *Principal*

In appreciation of our Principal, instructor, and leader; one whose influence among the pupils and teachers has been as broad as his sense of duty has been exalted; whose fervid desire has been for the promotion of the highest ideals of high school life, and whose loyalty, honesty, and fairness have been a source of endless inspiration, this volume of the "Pine Cone" is affectionately dedicated.



BUILDINGS IN PINEVILLE

IN THE PINE CONE



SCENES NEAR PINEVILLE

THE PINE CONE



SCENES OF PINEVILLE



BOARD OF EDUCATION



SUPERINTENDENT W. F. JONES

Superintendent Jones is a graduate of Georgetown College, getting an A.B. degree there in 1921. He has spent the past five years in Pineville; the first two as Principal of the high school and then receiving an earned and deserved promotion to the superintendency of the schools.

Mr. Jones is a very earnest, sympathetic, efficient, and just an all-round man. He is respected by all; is a thorough Christian gentleman, and the children's friend. We are glad to have had the opportunity of going through high school under his leadership.

FACULTY

MYRTLE McCRACKEN

*Head of Latin Department and
Expression*

Martin College, Pulaski, Tenn.;
George Peabody College, Nashville,
Tenn.; University of Chicago, Chicago,
Ill.; Principal of the Senior High
School and Expression, Wickliffe, Ky.;
Head of Latin and Expression, Shep-
herdsville, Ky.; Head of Language and
Expression, Pineville High School since
1923; Peabody College Summer Course
'25.

MARY FOX CLARDY

Head of History Department

A.B. Georgetown College, George-
town, Ky., '20; Instructor Howell High
School '20-'22; Hopkinsville High School
'22-'24; Pineville High School '25-'26.

JANICE HARNED

Head of Mathematics Department

A.B. Kentucky Wesleyan '25; In-
structor, Pineville High School '25-'26.



THE PINE CONE

FACULTY

MARY JEANETTE SOLOMON

Head of English Department

A. B. Randolph-Macon Women's College, Lynchburg, Va., '25; Instructor Pineville High School '25-'26.

H. WILLARD JOHNSON

Athletic Director and Physical Education

A.B. Hamilton College, N. Y. '20; University of Illinois Coaching Sessions '23-'24; Athletic Director, Virden, Illinois Community High School '20-'22; Athletic Director Lyons High School, La Grange, Illinois '22-'23; Athletic Director Pineville High School '23-'26.

MRS. W. F. JONES

Instructor in Language and English

A.B. Georgetown College, Georgetown, Ky., '21; Instructor in Language, Frankfort High School '21-'24; Morehead Normal School '24-'25; Pineville High School '25-'26.



THE PINE CONE



FACULTY

LEOLA GASKINS
Assistant in English

Andrew College, Cuthbert, Ga.;
Martin College, Pulaski, Tenn.;
University of Tennessee, Knoxville, Tenn.;
University of Georgia Summer School;
Teacher in English, Willacoochee High
School; Sixth Grade, Cochran, Ga.;
Pineville Sixth Grade '23-'24; Junior
High English '24-'26.

ALVA E. TANDY
Mathematics and History

Princeton College, Princeton, Ky.;
Graduate Western Kentucky State Nor-
mal, Bowling Green, Ky.; Peabody Col-
lege, Nashville, Tenn.; Teacher Pine-
ville Junior High School since '22; Pea-
body College Summer Term '24; Junior
High Mathematics Pineville '24-'26.

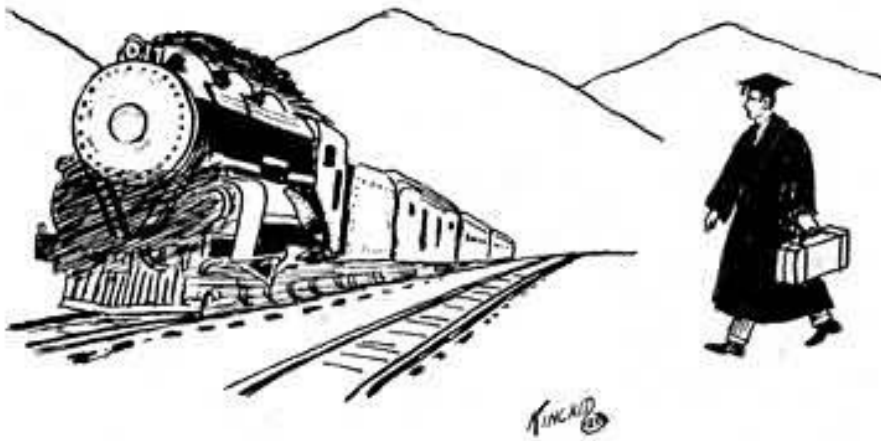
LOUISE BUCK
Music

Howard College, Gallatin, Tenn.;
Student University of Chicago; Grad-
uate College of Music, Cincinnati, Ohio;
Teacher Clinton College One Year; Bar-
bourville High School One Year; Pine-
ville High School since '21.

MRS. RICHARD McCOY

Secretary to Superintendent of
Schools, Pineville High School '25-'26.

SENIOR



THE PINE CONE

SENIORS

DEE JAMES

"Dee"

"He is a true friend, upright, straight-forward, and honorable, what more can be said!"

Secretary-Treasurer "P" Club; President of the Senior Class; Football '23-'24-'25; Track '24; Secretary Boys' Club '24-'25; Senior Pet Club; Basketball '25-'26; Cast "O Joy San;" "The End of the Rainbow;" "Always in Trouble;" "Oh, Susan."

Dee is a good student, and a good worker. His good fellowship has endeared him to many and he is held in high esteem by those with whom he has been associated.

MARY LINDSAY BRADLEY

"Suz"

"For learning hath she in abundance."

Girls' Club '25, Secretary '26; Treasurer Dramatic Club '26; Science Club '26; L. R. C. '25-'26; Senior Pet Club; Pep Club; Scholarship Cup '25; Cast "Pineville Fun Revue;" "Oh, Susan;" "The Doctor in Spite of Himself;" Vice-President Class '23-'24-'25; Basketball '26.

Mary Lindsay is the editor of the 1926 annual, which proves that she is capable, dependable, and sincere. She has made an excellent scholastic record, few students having had better standing in studies than she.

DELMAS CAWTHORNE

"Del"

"Better smoke now than hereafter."

Football '23-'24-'25; Track '25; Athletic Editor "Maroon and Gold"; Vice-President of Senior Class; Senior Pet Club; Boys' Club '23-'25; Varsity Club '24, Secretary '25-'26; Older Boys' Conference '24-'25; Class Historian '25.

Delmas possesses the rare combination of a good student, good disposition, and good sport, which accounts for his popularity with both faculty and fellow students.



SENIORS

HELEN WELLER

"HELEN"

*"Of all the lovely places
That I have ever seen,
I like to live in Pineville,
Where everything is 'Greene.'"*

Pep Club '26; Girls' Club '25-'26; Science Club; Treasurer of the Senior Class.

Helen follows true to the name she bears in keeping the record high. Popularity is another name for Helen and her friends are all those who know her.

ROY GIBSON

"GIBBY"

"He lives to build, not to boast."

Class President '23-'24-'25; Football '23-'24-'25; Track '24-'25-'26; Basketball '23-'25; Captain '26; Older Boys' Conference '24-'25; S. P. C.; Boys' Club Treasurer '25; President '24; Varsity Club '23-'24-'25-'26; Winner of the Varsity Club Athletic Scholarship Cup '25; Cast "Always in Trouble;" "The Teeth of the Gift Horse;" "The Doctor in Spite of Himself;" "Pineville Fun Revue;" "Oh, Susan."

Chosen as the Apollo of the high school, we feel sure that more than one heart will beat sadly when he is gone. In Pineville High School Roy won his laurels and in the same big way he should win them elsewhere.

GRACE STONE

"REN"

*"Her eyes are brown, her hair is red,
Her brains are large for one small head."*

Scholarship Cup '24; L. R. C. '25-'26; Literary Society '23; Class Basketball '23; Science Club '24-'26; Girls' Club Secretary '25; President '26; Pep Club '26; Expression '24; Dramatic Club '26; President '25; Senior Pet Club '26; Varsity Basketball '25; Captain '26; Class Historian '25-'26; Cast "Pineville Fun Revue;" "The End of the Rainbow;" "Oh, Susan;" "O Joy San."

Grace is an "A" student, a pride of the teachers, and a favorite with schoolmates. Her genial disposition, her sunny smile, and sunny red hair will be missed around the classrooms next year.



ON THE PINE CONE

SENIORS



CHARLES DEAN

"CHARLEY"

"A big heart always wishing to do right and be friends with everybody."

Older Boys' Conference '23; Literary Society '23; Manager of the Football Team '24; Science Club '26; Secretary of the Senior Class; Business Manager "Maroon and Gold."

An efficient student and one upon whom his teachers and classmates can depend. Charley is labeled as "small and smart and cute" but we know he will do big things.

LOUISE ASHER

"Herry"

"A rare compound of oddity, frolic, and fun, To relish a joke and rejoice at a pun."

Literary Society '23; Expression '23; Advisory Council of the Girls' Club '25-'26; Dramatic Club '26; Pep Club '26; Basketball '25-'26; L. R. C. '25-'26; Historian of the Class '26; Cast "Anne What's Her Name;" "Just Plain Mary;" "The Doctor in Spite of Himself;" "Pineville Fun Revue."

Always willing to be of help, and always dependable after the task is given her, Louise, with her cheerful disposition has won a warm place in the hearts of her classmates and the life of the High School.

L. G. MINTON

"L. G."

"It is not good for man to live alone, therefore I am married."

Science Club '26; Pep Club '26.

L. G. has proven the exception of the rule among students, by entering as an undergraduate, though married. Thoroughness and earnestness has been characteristic of everything he has done while in our midst.

THE PINE CONE

SENIORS

KATHERINE DAVIS

"KATY"

*"Not very tall is Katy or sedate,
But her music is divine;
And in the parlor when she has a date,
At talking she doth shine."*

High School Pianist '23-'24-'25-'26; Class Historian '23; Expression '23; President Dramatic Club '25-'26; Vice-President Girls' Club '25-'26; Senior Pet Club; Pep Club; Cast "Pineville Fun Revue;" "Anne What's Her Name;" "Much Ado About Betty;" "Always in Trouble;" "Oh, Susan."

Katy is probably one of the most accomplished girls in school and has taken a prominent part in all activities. We will miss singing and marching to Katy's music—and she can play.

ERNEST PETREY

"PETE"

*"Everything comes to him who waits,
Therefore why should I hurry?"*

Literary Society '23; Older Boys' Conference '23-'24-'25, President '26; Vice-President Boys' Club '24-'25, President '26; Basketball '26; Football '24-'25; Track '25-'26; Varsity Club '25-'26; Science Club '26; S.P.C.; Cast "O Joy San;" "The Pineville Fun Revue;" "The Doctor in Spite of Himself;" "Oh, Susan."

When Pete studies he is a fine student—when he doesn't he is mischievous, but Pete makes friends easily and keeps them.

HAZEL BYRLIN

"HAZEL"

*"Whate'er I do, whate'er I say,
You may rest assured I'll have my way."*

Girls' Club '26; Treasurer, Historian and Reporter '25; Science Club '24-'25-'26; Pep Club '26; Sophomore Class Historian; Expression '24; Dramatic Club '25; Reporter '26; S.P.C.; Cast "Always in Trouble;" "Pineville Fun Revue;" "Oh, Susan."

Hazel has been a shining light in high school dramatics; a promising student in music and expression. She is a valuable asset to any class.



THE PINE CONE

SENIORS

SOPHIA GILBERT

"SOPHIA"

*"Many she loved, many she served,
Such popularity must be deserved."*

Literary Society '23; Class Basketball '23; Science Club '23-'26; Advisory Council Girls' Club '25-'26; Dramatic Club '25, Secretary '26; May Queen '25; Pep Club '26; Joke Editor "Maroon and Gold," also "Pine Cone;" Senior Pet Club; Cast "O Joy San;" "Pineville Fun Revue;" "Oh, Susan;" "The Doctor in Spite of Himself."

There has never been a more popular girl in high school than Sophia. Her cheery nature and ready smile have endeared her to many and she has a host of friends.

CARL HOSKINS

"CARL"

"Master of himself at all times."

Pep Club.

Carl came to us at the beginning of the second semester. Since that time he has proven himself a valuable student, and one that is interested in school activities. We sincerely regret that he could not join us sooner.

LANTA STRUNK

"LANTA"

*"With a simple unaffected manner
And a face all hid in smiles,
She holds under true friendship's banner
All those around her for miles and miles."*

Literary Club '23; Girls' Club '25-'26; Expression '23-'24-'26; Dramatic Club '26; Editor-in-Chief "Maroon and Gold;" Cast "Anne What's Her Name;" "Just Plain Mary."

Editor of the "Maroon and Gold." She is a capable student, an energetic worker, and a loyal friend. She has successfully completed each task and when she is gone her place will be difficult to fill.



THE PINE CONE

SENIORS

EVA GRAGG

"EVA"

"Choicest things of life come in small packages."

Class Basketball '23; Literary Society '23; Violin '24-'25; Girls' Club '24-'25; Social Editor "Maroon and Gold" '25.

Good natured, sympathetic, studious, and reliable, Eva has made her presence felt while in P. H. S. She has won many friends.

ROBERT HELTON

"BOB"

"If worry was the only cause of death he would live forever."

Boys' Club '23-'24; Class Basketball '24; Pep Club '26; Perfect Attendance '20-'25.

Bob, in his quiet, courteous way has been a faithful student, prompt, and on hand at all times. Bob's curly hair has been envied by many of us.

LOUISE WILSON

"LOUISE"

*"A gentle maiden, neat and fair,
In no garden grows a flower so rare."*

Literary Society '23; Girls' Club; Dramatic Club '26; Senior Class Prophet.

An intensive student—a considerate friend. To know Louise well is to appreciate her, for a kind and gracious heart lies beneath the exterior of soberness she sometimes wears.



SENIORS



EDNA GREENE
"MARY EONA"

*"You think she is shy,
Oh me! Oh my!
You just don't know her,
That's why!"*

Music '23-'24; Voice '23-'24-'25; Science Club '24-'26; Secretary Science Club '26; Girls' Club; Dramatic Club '26; Pep Club.

Edna possesses one of those rare natures that you cannot dislike, once you know her. With her natural wit and humor she has many times kept the Senior Class from becoming dull.

LEONARD SLUSHER
"LEONARD"

"He who perseveres will succeed in the end."

Literary Society '23; Class Basketball '25; Boys' Club '25; Pep Club; Assistant Editor "Maroon and Gold."

Leonard has made little noise, but has worked along in a substantial way, getting what he wanted. May he have the same success in life.

MABEL BISHOP
"MABEL"

"Where duty calleth, she is always found."

Literary Society '23; Science Club '23-'26; Girls' Club; Pep Club.

Mabel has devoted her time to study, but is never too busy to turn aside and lend aid to a fellow classmate. In doing so she has cultivated a wide circle of friends.

THE PINE CONE

SENIORS

JOSEPHINE WILSON

"JOSEPHINE"

"Marks, not men, have been my aim."

Literary Society '23; Science Club '24-'26; Vice-President '26; Girls' Club; Pep Club.

Only a few know her real worth. She has worked silently and calmly, regardless of any immediate reward. She deserves much credit.

MAE BROUGHTON

"MAE"

*"If e'er she knew an evil thought,
She spoke no evil word."*

Basketball '23; Literary Society '23; Girls' Club; Pep Club; Perfect Attendance '23-'25.

Mae goes her quiet way, never giving up until she accomplishes the thing she sets out to do. We predict success for Mae in anything she undertakes.

ELVIA VAN BEVER

"ELVIA"

*"I envy those who know more than I,
And envy those who know less."*

Literary Society '23; Basketball '23; Girls' Club; Pep Club.

A quiet, earnest, hard working little student, Elvia has pushed her way forward. She has filled her place without seeking the limelight. We shall always remember and appreciate her.



SENIORS



OPAL PURSIFULL
"SUSAN"

"By their works ye shall know them"

Pep Club.

Opal is known as a good student, and one who can read French like a Frenchman. Her pleasing manner is very attractive, and a host of friends is the result.

NANNIE MURRAY
"NANNIE"

*"A quiet and gentle manner,
A student just the same;
She's bound to win a banner,
And on it is written fame."*

Literary Club '23; Science Club '23-'25;
Girls' Club; Pep Club.

A conscientious student and one who works hard. Nannie, in her quiet unassuming way has made herself a very worthwhile place in the life of the high school.



Senior Class History

This is station PHS at Pineville, Kentucky, broadcasting its annual historical program. We have a representative of the Class of '26 who will tell us of the accomplishments of this class.

"We have often been called the noisiest class in the school but we want to take this opportunity to inform all concerned that this is simply an exhibition of our pep.

"Are we talented? There isn't a single member of our class who hasn't shown some display of talent. Never has such an array of originality been shown by one group. We have musicians, artists, poets, scientists and athletes.

"Are we good sports? The answer to this question may be found by looking at our football and athletic records, since we have been able to participate in athletics. In our Senior year alone, we have had six letter men on the football team, to say nothing of the year that one of our boys was named on the All-State Team. We also have in our midst, the President of the Girls' Club, the President of the Dramatic Club, the Captain of the Football Team, Captains of both boys' and girls' Basketball Teams, and the Captain of the Track Team. Everyone has learned that to make any effort at success, first they must have help from our class.

"'All things come to those who wait.' After three years of study we believed this to be true. We approached our last year in high school with all the zeal and enthusiasm that we portrayed in our first year.

"In our Senior Year we took upon ourselves the responsibility of the publication of the 'Maroon and Gold.' The editorial staff, assisted by Mr. Henderson, published a paper that any school would be proud of.

"We entered our high school as green and gaudy Freshmen, but none who saw us now would recognize us to be the same class. In speaking of our talents and achievements, I could talk for several hours, but time forbids. Summing up our high school life, I would say: We have tried to uphold the standards of our school, to retain the respect as well as the admiration of our underclassmen, and we have learned the true meaning of Loyalty. May the fame of the Class of '26 ever be remembered and its spirit prevail through future years."

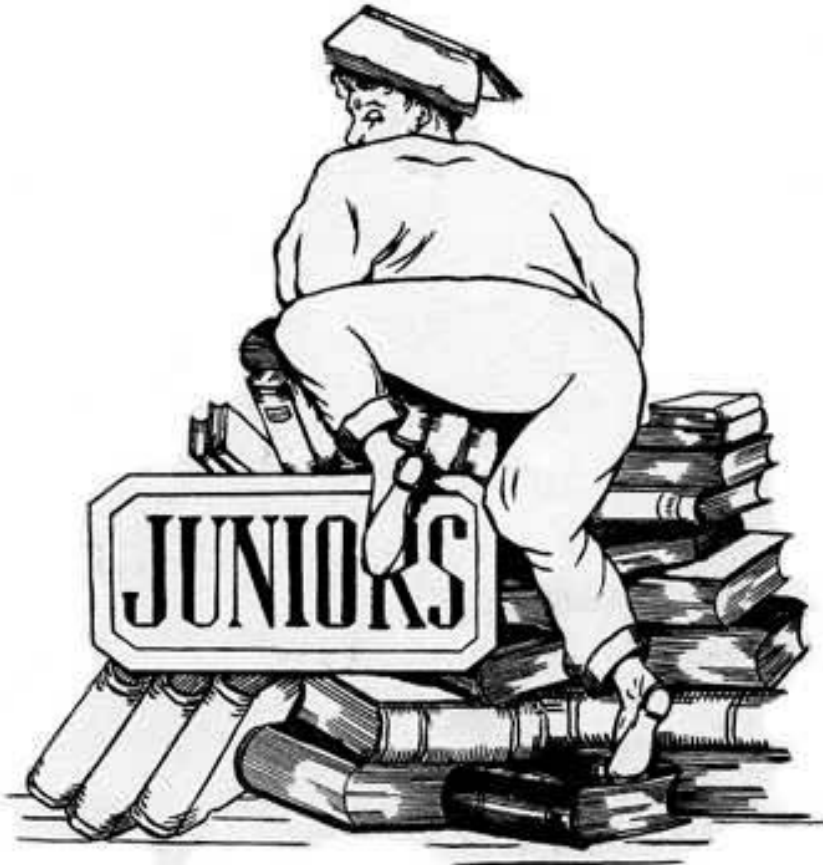
You have just been listening to a member of the famous Class of '26. This is station PHS at Pineville, Kentucky. We are signing off until May 28, 1927.

By G. S. and L. A.



SENIOR SNAP SHOTS

THE PINE CONE



How I like being a Junior

Junior Class

Colors: Red and White

Flower: Red Rose

Motto: "United We Stand, Divided We Fall"

CLASS OFFICERS

TIP HAMMONS - - - - - President
 ALBERT BOSTON - - - - - Vice-President
 ARCHIE ROLLINS - - - - - Secretary-Treasurer
 GYPSY WILSON, LUCILE KELLEY - - - - - Historians

CLASS ROLL

BOSTON, ALBERT	HOLLINGSWORTH, MAE
BRACKETT, HERBERT	ISAACS, LENA
BYRLEY, MARIE	JOHNSON, BESSIE
BAKER, GEORGE	JOHNSON, JESSIE
CAWTHORNE, DON	JOHNSON, HELEN
CHAPPELL, MURIEL	KELLY, LUCILE
EARL, FRANCES	LANE, JAMES
ELLISON, VAUDIE	MCDONALD, ROBERTA
EUSTER, HESTER	RAMSEY, WILLIAM
FRANCE, MARIE	ROLLINS, ARCHIE
GALLOWAY, LOUISE	ROACH, MARGARET
GOLDEN, BEN HALE	TURNER, ROSA
GREENE, HESTER	WILSON, GYPSY
HAM, MAGGIE	WOOD, ETHEL
HAMMONS, TIP	CUNNINGHAM, SARAH
HOWARD, MARIE	BOWMAN, WARE
HILL, MILBRED	WILKERSON, LILLIAN



JUNIOR CLASS

THE PINE CONE

History of the Junior Class

Shakespeare has said: "Some are born great, some achieve greatness, and some have greatness thrust upon 'em." It is with humility, but with the greatest pride that the Class of '27 can say that neither by inheritance nor by gifts, but by real achievements we have attained the standard that we now hold.

We entered the high school with an enrollment exceeding that of any preceding class. Although we have decreased in number each year, we have increased in wisdom and knowledge.

We have been well represented in all school activities during our career in high school.

In the Junior Class you find some outstanding scholars, our scholarship being of the highest type.

The Juniors have the honor of having some girls and boys as two year members of the basketball squads. Among the girls are Marie Howard, Gypsy Wilson, and Mae Hollingsworth. The boys are Tip Hammonds and Donald Cawthorne. Others made a fine showing this year and attributed much to the teams.

We have the distinction of having in our midst the captain-elect of next years' football team, Archie Rollins. James Lane, Archie Rollins, Herbert Bracket, Donald Cawthorne, and Tip Hammonds are all letter men in football.

A great per cent of the Girls' Club is made up of Junior girls, and the boys are great supporters of the Boys' Club.

In the Science Club James Lane is President, and William Ramsey has proven to be a very competent secretary. A large part of this club is made up of Juniors.

In dramatics we are outstanding. Many of the students have acted their parts exceedingly well in the different plays that have been presented. The Dramatic Club has more Junior representatives than any other one class. The Music Club is also splendidly represented by the Juniors.

Because of our modesty we will not mention the many other honors that are ours.

If fate has not predestined any misfortune to the members of our class, when our commencement day comes, we hope to say with honor and dignity, "We came, we saw, we conquered."

By L. K.

SOPHOMORE



THE FINE ONE

Sophomore Class

Colors: *Blue and Gold*

Flower: *Pansy*

Motto: *"We are on Our Way."*

CLASS OFFICERS

LEON HOSKINS - - - - - *President*
 EDWARD WILSON - - - - - *Vice-President*
 RUTH RUFFY - - - - - *Secretary-Treasurer*

CLASS ROLL

ASHER, JACK	ROBERTS, LARRY
BIRD, FAULKNER	INGRAM, WILLIA
BOWMAN, RAY	ISAACS, OSCAR
BOWMAN, LOUISE	JAMISON, GENEVA
BOWMAN, ELLIZABETH	JEFFRIES, JAMES
BINGHAM, VIRGIL	JOHNSON, JOSEPHINE
BAILEY, JETT	JOHNSON, PEARL
CARNES, AXIE	MIRACLE, FOYSTER
CATON, DEAN	MIRACLE, KATHERINE
CHANDLER, ARTHUR	PARKER, JAMES
CREECH, RAY	PRUITT, LORENA
CULTON, BERNADINE	PURSHULL, GENEVA
ELAM, RUSSELL	ROGERS, ETHEL
ELLISON, VERNIE	RUFFY, RUTH
FOLEY, THOMAS	SMITH, JAMES
GADDIE, RAYMAL	SCOTT, MORRIS
GOINS, MAE	SMITH, EDWIN
GRAGG, ELIZABETH	SPURLOCK, JAMES
GREENE, PAUL	STARNES, JAMES
GARRARD, DAN	STARNES, MARY
HAMMONS, EARL	STONE, RUBY
HOSKINS, RALPH	STRUNK, PAUL
HOSKINS, LEON	TURNER, ANNA
HOSKINS, MABEL	TURNER, EVERETT
HOSKINS, OCTAVIA	WHITAKER, MARGARET
WILSON, EDWARD	



SOPHOMORE GROUP

THE PINE CONE

History of the Sophomore Class

Last year's class of unsophisticated Freshmen, shorn and man-handled by upper classmen, returned in September in solid phalanx, determined to wreak vengeance for their wrongs and to prove their prowess in every activity in Pineville High.

As Freshmen, the Class of '28 furnished several stars in scholarship, the high-grade medals in Latin and English were won by Paul Greene. Leon Hoskins received second honors in Latin, with many other students ranking very high.

The Freshman girls showed their enthusiasm by organizing a club in which loyalty to the school and support of all worthwhile activities abounded. Great talent was shown in the presentation of the play, "A Bunch of Roses," given by the members of the club. Several other members of the class took part in "The Pineville Fun Revue."

This group of "Green but Growing" Freshmen again responded to the call of loyalty in helping to develop the excellent football team which represented P.H.S. In September, '24, when the summons for football candidates was given, a response was made by Earl Kirk and Solomon Carnes, who by hard work, gained the much coveted Pineville High letter.

In basketball the efficiency of the Freshman Class was again proven by the fact that James Smith became a member of the Maroon and Gold five, and Paul Greene was appointed manager. In track Edward Wilson proved to be one of the best in school, and James Jeffries was a competent manager. This year '28 holds its scholarship record, has three varsity football men, namely Solomon Carnes, Earl Kirk, and Edwin Smith, the latter having the honor of being manager of the varsity team, and ten active members of the basketball team.

The majority of the Sophomore girls became live wires in the Senior Girls' Club, and have done their part in sustaining the high standards of that club.

The Class of '28 will uphold Pineville High's standards of scholarship, sportsmanship, and good fellowship.

By R. G. and P. G.

THE FINE LONE



FRESHMEN

Page Thirty-four

Freshman Class

Colors: *Red and White*

Flower: *Lily of the Valley*

CLASS OFFICERS

WILLIE JEAN HOGGES	- - - - -	President
HELEN VANBEVER	- - - - -	Vice-President
RAE ASHER	- - - - -	Secretary-Treasurer

CLASS ROLL

ADAMS, LEO
 ADAMS, JEANETTE
 ASHER, RAE
 ASHER, AMIS
 BINGHAM, MYRTLE
 BINGHAM, LUCY
 BRITTAIN, GLADES
 BROUGHTON, DAISY
 BROCK, OTTO
 CORNN, LELA
 CREECH, NELL
 CREECH, BILL
 DYER, SONNEY
 EUSTER, RUBY
 EUSTER, SYLVIA
 EUSTER, ABE
 ESPERSON, EUPHEMIA
 ELLIOTT, KITTY
 FAULKNER, MARIE
 GALLOWAY, DOROTHY
 GILBERT, JAMES
 GEYER, HELEN
 HOWARD, BEULAH
 HOGGES, WILLIE
 HARKNESS, ANNA
 LOCKARD, GLADYS
 LONG, RICHARD
 MULLINS, RUTH
 CARD, NELL
 SMITH, NATHANIEL
 JONES, NEWTON
 MURRAY, ELMER

MILLS, CARNES
 NORROD, BURICE
 ONKST, NONETTA
 PRICE, PRESLEY
 PURSIFUL, MERCEDES
 ROBERT, HERSCHEL
 SUTTON, DELLA
 SELSEY, ALICE
 SPURLOCK, MARY
 SLUSHER, ANNIE
 STEELY, EARL
 STUCKER, LESLIE
 THOMPSON, SHELBY
 VANBEVER, BILLY
 VANBEVER, HELEN
 VANBEVER, EVELYN
 WOOLUM, WALTER
 WILSON, CECIL
 WILSON, ADA
 WILSON, DANIEL
 WILSON, BESSIE
 PATTERSON, LINDA
 KELLY, MAJEL
 LOVELL, BESSIE
 BURGIN, LILLIAN
 FRANCE, ETHEL
 HIBBARD, EUNA
 GRAGG, CHARLES
 FORMER, RUTH
 WALTON, CLOD
 ROBBINS, BEATRICE
 BOSTON, MARION



FRESHMAN GROUP

ON THE PINE CONE JAC

History of the Freshman Class

Well, here we are at last! After many hardships the Eighth Grade of '25, "hyenas," have become green and courageous Freshmen.

Mr. Henderson divided the class because of its large number, but the loyalty and spirit of the "Freshies" remained unbroken.

Our class soon realized what it meant to be in high school and settled down to work. It did not take us long to become accustomed to the work, and we soon proved to "Old Pineville High" that we had brains, pep, and athletic ability in our class.

The Sophomores oiled their shears and proceeded to shear our boys' heads, this caused sorrow for many, and delight for several. In fact, all the class received the usual amount of razzing and hazing, but it lasted only a short time.

A few boys of our class reported for football practice and showed their loyalty to our school. All who reported made a good showing on the field. When basketball season rolled around we responded to the call for material. Several of our girls and boys reported and showed their ability in the sport.

A group of girls and boys organized class teams and competed with other class teams. Our class season proved to be successful, much to our satisfaction.

In mentioning our activities, we must not forget to mention the S. A. P. Club, which was organized by a "peppy" group of girls. This club was organized to help the school in every way possible, and to show the school that the Freshmen were behind them in all activities. The members gave a program in Chapel which made the whole school, Faculty included, "Sit up and take notice!"

All that we have achieved we owe to our teachers, who struggled to pour a little knowledge into our heads. We have to give them credit for explaining the essentials of Latin, and equations of Algebra. We realize that we were taught many things useful in later years.

In addition to our other achievements, we had the honor of having the managers of the girls' and boys' basketball teams, and the cheer leader in our class.

The class as a whole has stood by the school, and as we look back over the days spent in the Freshman class, we realize that the year has been a happy and prosperous one.

By N. C.

Eighth A Grade History

On January 23, 1925, a class of happy boys and girls entered Junior High. We were very proud, for we were entering the new building. Some of the boys and girls went out for basketball, and at the end of the season we had a very fine team. When field day came we were very much excited. After a hard struggle we won a banner which we had wanted for a long time.

Most of our class have "stuck" together, and we hope to graduate from P.H.S. some day. In the past we have done the best we could, but in the future we intend to do better and try to make P.H.S. proud of us. We also determine to make P.H.S. miss us more than any other class that has ever graduated from P.H.S. Watch us, and see if we really do what we want to.

COLORS: *Crimson and White*

FLOWERS: *Red and White Roses*

MOTTO: *"The Sky is the Limit."*

CLASS OFFICERS

VIRGINIA CHANDLER	- - - - -	<i>President</i>
MARY D. ROLLINS	- - - - -	<i>Vice-President</i>
A. B. CULTON	- - - - -	<i>Secretary</i>
CHARLES WILKERSON	- - - - -	<i>Treasurer</i>

CLASS ROLL

RUSSELL BLACK	MARY D. ROLLINS
A. B. CULTON	BOYDIE RICE
VIRGINIA CHANDLER	MASIE STONE
ENID CHANDLER	BURNETT TORRY
VIRGINIA DUFF	EMILY VANBEVER
EVELYN EUSTON	CHARLES WILKERSON
ELIZABETH FRANCE	EASTER WILKERSON
JAMES HUNTER	MARY B. WOOD
JACK HALE	BERNICE WELER
ALMA JOHNSON	NOAH DUFF
JOE NAPIER	RUTH GREENE
DAVID RHODES	LEE TAYLOR



EIGHTH A GRADE



Eighth B Grade History

On the 8th of January, 1926, the proudest bunch P.H.S. has ever had, entered the Eighth Grade.

We were a little confused at first, due to the arrangement of our schedule, but we let nothing interfere with our studies, and strove bravely on, intending to graduate with the highest honors any class ever received from Junior High School.

After Christmas we completed History, and began Civics. Our grades in the former subject were worthy of much praise.

We have only two teachers this year, Miss Tandy and Miss Gaskins. We sincerely regret to loose them at the end of the term.

We will have the honor of entering High School next Jan. if we pass our final examinations, which no doubt we will do with great ease.

We have organized a boys' and girls' basketball team and we hope to lead a successful season.

This year's Senior Class boasts of its pep and ability, but you just watch the Seniors of 1930.

Colors: *Blue and Gold*

Flower: *Violet*

Motto: *"Ever Ready."*

CLASS OFFICERS

DANNY HOSKINS	President
ERNEST YOUNKIN	Vice-President
JANE BRADLEY	Secretary
MARY BRUCE PITMAN	Treasurer

CLASS ROLL

BAILEY, JOHN HILL BRADLEY, JANE BOWMAN, MAE BOSTON, VIRGINIA DUFF, JOSIE ELLIOTT, WALTER EVANS, ULYS GREENE, LAURA GREENE, ZELMA GREENE, HOMER HOSKINS, DANNY HUGHES, HELEN HOWARD, ADA MCCARTY, CHRISTINE	MATTHEWS, CHARLES NAPIER, R. H. PITMAN, MARY BRUCE PHILLIPS, SARA MOSS SMITH, JANE THOMPSON, KATHLEEN VANBEVER, MARY E. WOODSON, JAMES WOODSON, JULIA YOUNKIN, ERNEST PAGE, ROY HUMPLEET, CLAUDE WILSON, MARY LEE YEAGER, ALICE
---	--

WARREN, RHUC AMY



EIGHTH B GRADE

THE PINE CONE

Seventh A Grade History

On September the fourth, 1925, we entered Junior High School. In past years we had been changed and separated from time to time, but now we have formed a real class.

We are beginning to feel our importance as members of Junior High. We feel highly honored at being granted a room in the new building, and we are earnestly preparing for High School.

When the call was made for candidates for basketball, we proved to Pineville High School that we were not backward in anything. Both boys and girls did their best, and we expect to do as well in our books as in basketball in the future.

We know Mr. Jones expects much of us in the future. He has promoted us to the Seventh Grade, and we have four different teachers. We expect to do our best for all of them.

COLORS: *Blue and White*

FLOWER: *Violet*

MOTTO: *"To Try is to succeed."*

CLASS OFFICERS

ROBERT HOLLINGSWORTH	President
GOLDIE SCOTT	Vice-President
ORA MIRACLE	Secretary-Treasurer

CLASS ROLL

ASHER, VANILLA BIRD, MARGARET BINGHAM, FLORENCE BAIN, TILMAN BLACK, JOHN COMBS, BERTRAM ELLISON, GRACE FULK, TAYLOR GRAGG, EDWARD GILLISPIE, WALTER S. HOLLINGSWORTH, ROBT. HARRISON, GEORGIA HOSKINS, RUTH HENSCHEN, DORO INGRAM, LUCILE	LOCKARD, MAGGIE MONTGOMERY, MARY MIRACLE, ORA PURSIFUL, W. B. PRICE, WALLACE RUFFY, VIRGINIA ROLLINS, LENA MAE ROBERTS, MARION SHERWIN, MILBRED SATTERFIELD, JAMES SCOTT, GOLDIE SEWELL, SMITH TURNER, LESS VANBEYER, SAMMIE WILSON, ANNA WILSON, TYREE
---	--



SEVENTH A GRADE

Seventh B Grade History

The most eventful day in the history of our class, was one day last fall, when Mr. Jones came into our room and announced to us that if we worked real hard he would send us into Junior High at the beginning of the second term.

So we went to work in earnest, and as a reward we were promoted to Junior High School in January, '26. Our class was very large, as every member passed, so we were divided into two classes with Miss Alice Byar, and Miss Jerry Solomon for home teachers. We were all glad when we knew that Miss Byar was to be promoted with us.

After we had worked hard, and Miss Byar said we had passed, we thought we knew about all there was to know, but when we got into Junior High, we began to realize how very little we knew.

We felt very big going into High School Chapel for the first time. As we were marching in, a crowd over in the corner yelled, "Fifteen for nursery." We may be in a nursery now, but watch us in the future.

By M. A.

Colors: *Blue and Gold*

Motto: *"Keep Climbing."*

CLASS OFFICERS

MARGARET KELLY	President
KATHERINE EVERSOLE	Vice-President
CARL EARL	Secretary
VIRGINIA BROWN	Treasurer
MARTHA ATKINS, MARIE WHITAKER	Historians

CLASS ROLL

ASHER, WARDEN ATKINS, MARTHA BIRD, ROBERT BROUGHTON, JOE BRACKETT, BEULAH BROWN, VIRGINIA CAIRNS, EMMA PRICE CAWTHORNE, JAMES EARL, CARL EVERETT, BLANCHE EVERSOLE, KATHERINE ELAM, DOBOTHY MAX ELLIOTT, DELBERT GREENE, MAVO GOLDEN, LYNN GRAGG, SUSAN HORN, RUBY HENDRICKSON, SHIRLEY HALL, BEULAH	HARR, RUSSELL INGRAM, BILL INGRAM, GENE JEFFRIES, JANE JACKSON, MARION KELLY, MARGARET LEE, OPAL MOODY, ADA MIRACLE, BUSTER MILLS, MYRTLE PEARCE, KATHERINE REYNOLDS, GEORGE SMILES, RUBY SAYLOR, ROY THOMPSON, HAZEL TORBERT, RALPH VANBENDER, HAZEL WHITKER, MARIE WOOLUM, CHARLES
--	--

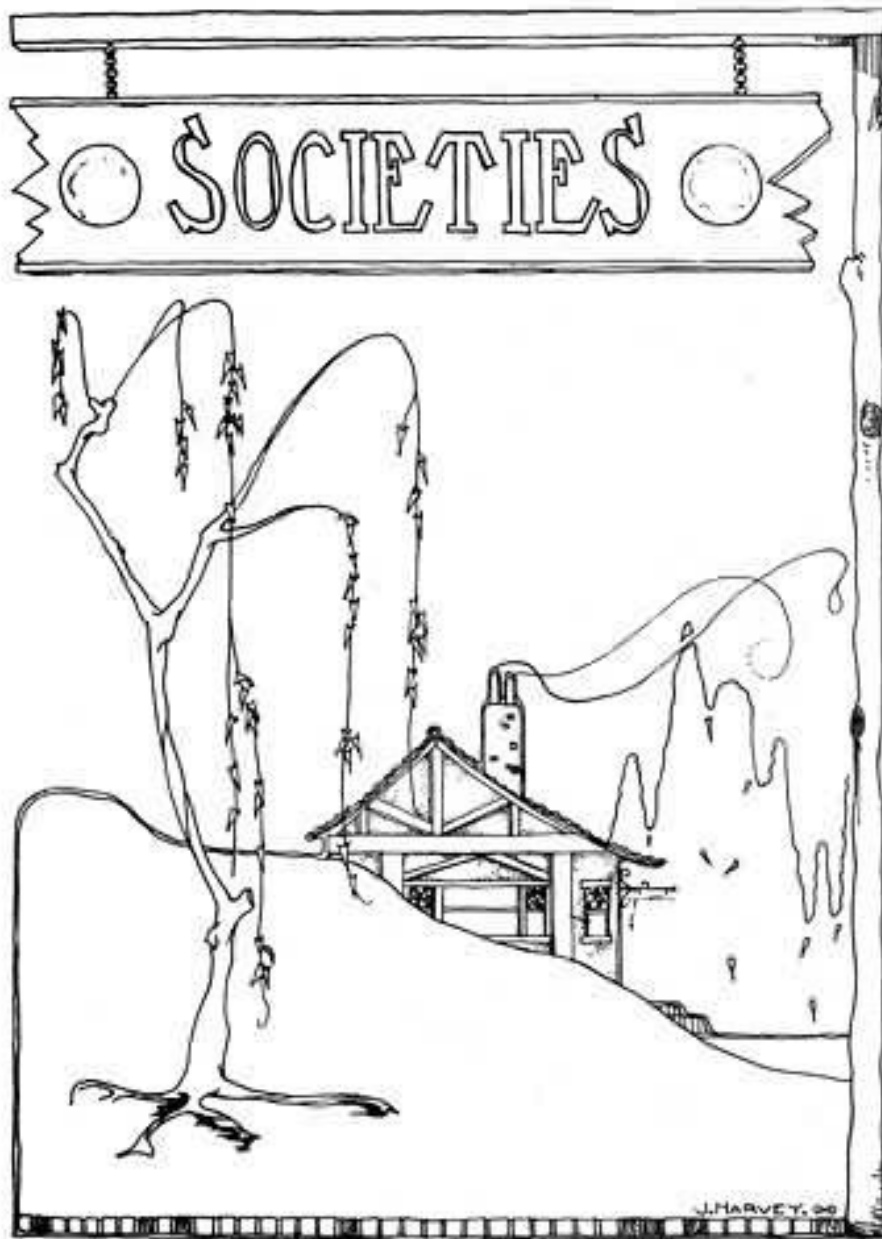
YOUNG, MARY PAT



SEVENTH B GRADE

THE PINE CONE

WINTER PINE CONE



Girls' Club History

Now in its second year, the Girls' Club has proved itself to be one of the most valuable student organizations in Pineville High School.

Never has the Girls' Club failed to do its duty, and never has this organization undertaken anything but what that thing proved successful.

The Club has co-operated with every plan that meant progress to the school. It has looked for ways in which to render service, and finding them has performed any task required, and has done it well.

In the closing of the second chapter in the history of the club, one pauses, astounded at the progress this organization has made. Belonging to this club has made every girl realize what activity, work, and fellowship really mean.

Several new customs have been started by this club, one of the most important being the starting of a May Festival, which is to be an annual affair in P.H.S.

In the spring of 1925, the first May Festival was held under the auspices of the Girls' Club. This proved to be one of the most successful of the clubs' undertakings. Two votes had to be taken to decide who would have the honor of being first May Queen. The first vote showed a tie between Lucile Kelly and Sophia Gilbert. In the second vote, Miss Gilbert was chosen to be queen. Other members took part in a May pole dance. The ribbons of the pole were blue and gold, these being the club colors. The girls were dressed in rainbow colors.

May the Girls' Club continue to be the leading organization in school, and may the future members enjoy the hearty good times that the founders and the first members were privileged to enjoy in P.H.S.

CLASS OFFICERS

GRACE STONE	<i>President</i>
KATHERINE DAVIS	<i>Vice-President</i>
MARY L. BRADLEY	<i>Secretary</i>
LUCILE KELLY	<i>Treasurer</i>

CLASS ROLL

ASHER, LOUISE	GILBERT, SOPHIA	MURRAY, NANNIE
BOWMAN, ELIZABETH	GREENE, HESTER	MCDONALD, ROBERTA
BOWMAN, LOUISE	GALLOWAY, LOUISE	ROACH, MARGARET
BRADLEY, MARY	GADDIE, RAYMEL	RUFFY, RUTH
BYRLEY, HAZEL	HAM, MAGGIE	STONE, RUBY
BYRLEY, MARIE	HOWARD, MARIE	STONE, GRACE
BISHOP, MABEL	HILL, MILDRED	STRUNK, LANTA
CARNES, AXIE	HOLLINGSWORTH, MAE	TURNER, ROSA
CHAPPELL, MURIEL	HOSKINS, OCTAVIA	TURNER, ANNA
CUNNINGHAM, SARAH	HOSKINS, MABEL	WILSON, GYPSY
CULTON, BERNARDINE	ISAACS, LENA	WILSON, JOSEPHINE
DAVIS, KATHERINE	INGRAM, WILLIE	WILSON, LOUISE
EARL, FRANCIS	JAMISON, GENEVA	WILKERSON, LILLIAN
EUSTER, HESTER	JOHNSON, HELEN	WELLS, HELEN
ELLISON, VAUDIE	JOHNSON, BESSIE	WOODS, ETHEL
ELLISON, VESSIE	KELLY, LUCILE	WHITAKER, MARGARET
GREENE, EDNA	MIRACLE, KATHERINE	PURSIFULL, GENEVA



GIRLS' CLUB



S. A. P. Club

FLOWERS: *Two Lips (Tulips)*

COLOURS: *Blue and White*

MOTTO: *"A Good Rep. and Lots of Pep"*

OFFICERS

WILLIE JEAN HODGES	- - - - -		<i>President</i>
HELEN VANBEYER	- - - - -		<i>Vice-President</i>
NELL CARD	- - - - -		<i>Secretary-Treasurer</i>
MRS. JONES	- - - - -		<i>Adviser</i>

ROLL OF S. A. P. (Snappy and Peppy)

ASHER, RAE	GALLOWAY, DOROTHY
ADAMS, LEO	GREY, HELEN
ADAMS, JEANNETTE	HOWARD, BECLAR
CORN, LILA	HOGGES, WILLIE JEAN
CARD, NELL	PURISFUL, MERCEDES
EUSTER, RUBY	VANBEYER, HELEN
EUSTER, SVELTA	VANBEYER, EVELYN

WOOCUM, EDITH



Junior Girls' Club

COLORS, *Green, Black, and Yellow*

FLOWER: *Yellow Chrysanthemum*

OFFICERS

VARILLA ASHER	- - - - -	President
JANE SMITH	- - - - -	Vice-President
VIRGINIA BOSTON	- - - - -	Secretary-Treasurer
MISS SOLOMON	- - - - -	Sponsor

ROLL OF JUNIOR GIRLS' CLUB (Sigma Pi Omega)

ASHER, VARILLA	ROLLINS, MARY D.
BOSTON, VIRGINIA	ROLLINS, LENA MAE
EUSTER, HESTER	SMITH, JANE
GREENE, RUTH	STONE, MAISIE
HOWARD, ADA	SCOTT, GOLDIE
MIRACLE, ORA	VANBEVER, ELIZABETH
PHILLIPS, SARAH MOSE	WOOD, MARY B.
RICE, BOYDIE	WELLER, BERNICE

Science Club

HISTORY

The Science Club was organized two year ago in Pineville High School under the efficient direction of Prof. L. C. Henderson. During the first year meetings were held regularly and interesting programs were rendered. One of the most outstanding features of its work during the year was a contest to determine the pupils who had derived the most benefit from the club's work. Miss Mabel Bishop was declared the winner, and was presented with a medal in recognition of her achievements.

Because of the continuous demands upon the members for their time and work in the many other activities of our school, the work of the club was discontinued last year. It was taken up again this year with renewed zeal, and has made rapid strides in every phrase of its work. The club plans even greater things for the coming year.

CLUB OFFICERS

JAMES LANE - - - - - *President*
JOSEPHINE WILSON - - - - - *Vice-President*
WILLIAM RAMSEY - - - - - *Secretary-Treasurer*

CLUB ROLL

BISHOP, MABEL	HOSKINS, RALPH
BRADLEY, MARY L.	KELLY, LUCILE
BRITTAIN, GLADYS	LANE, JAMES
BYRLEY, HAZEL	MINTON, L. G.
CAWTHORNE, DONALD	MURRAY, NANNIE
DEAN, CHARLES	PETERY, ERNEST
DYER, SONNEY	RAMSEY, WILLIAM
EUSTER, HESTER	STONE, GRACE
EUSTER, RUBY	VAN BEVER, BILLY
GILBERT, SOPHIA	WELER, HELEN
GREENE, EDNA	WILSON, JOSEPHINE
HAM, MAGGIE	WILSON, GYPSY



SCIENCE CLUB



Dramatic Club

OFFICERS

KATHERINE DAVIS	President
GYPSY WILSON	Vice-President
SOPHIA GILBERT	Secretary
MARY L. BRADLEY	Treasurer
HAZEL BYRLEY	Reporter

MEMBERSHIP

ASHER, LOUISE
 BRADLEY, MARY L.
 BYRLEY, HAZEL
 CHAPPELL, MURIEL
 EUSTER, HESTER
 GADDIE, RAYMEL
 GALLOWAY, LOUISE
 GEYER, HELEN
 GILBERT, SOPHIA
 GRAGG, ELIZABETH
 GREENE, EDNA
 HOSKINS, MABEL

HOWARD, MARIE
 KELLY, LUCILE
 KELLY, MAJEL
 MANN, MARTHA
 McDONALD, ROBERTA
 PHILLIPS, SARAH MOSS
 STONE, GRACE
 STRUNK, LANTA
 WOOD, ETHEL
 WOODSON, ELSIE
 WILSON, LOUISE
 WILSON, GYPSY



Music Department

MEMBERSHIP

ATKINS, ROWENA
ATKINS, MARTHA
ATKINS, LIDA LEE
CHAFFELL, SIDNEY
CHAFFELL, MURIEL
DAVIS, ELEANOR
DAVIS, KATHERINE
EUSTER, HESTER
EUSTER, EVELYN

EUSTER, SYLVIA
GALLOWAY, LOUISE
GREENE, LAURA
HAM, MAGGIE
HOWARD, HERIAN
KELLY, LUCILE
MCCOY, HORTENSE
FITMAN, MARY BRUCE
PHILLIPS, SARAH MOSS

ROLLINS, MARY

Popularity Contest



Best Student
PAUL GREENE

Most Valuable to P.H.S.
DEE JAMES

Most Handsome Boy
ROY GIBSON

Best Looking Girl
LEO ADAMS

Most Conceited
FRANCES EARL

Most Versatile
KATHERINE DAVIS

Best Natured
MARIE HOWARD

Peppiest
MAE HOLLINGSWORTH

Teacher's Pet
LINDA PATTERSON

Biggest Bonthead
DEAN CATON

Best Sport
DEE JAMES

Most Popular Girl
SOPHIA GILBERT

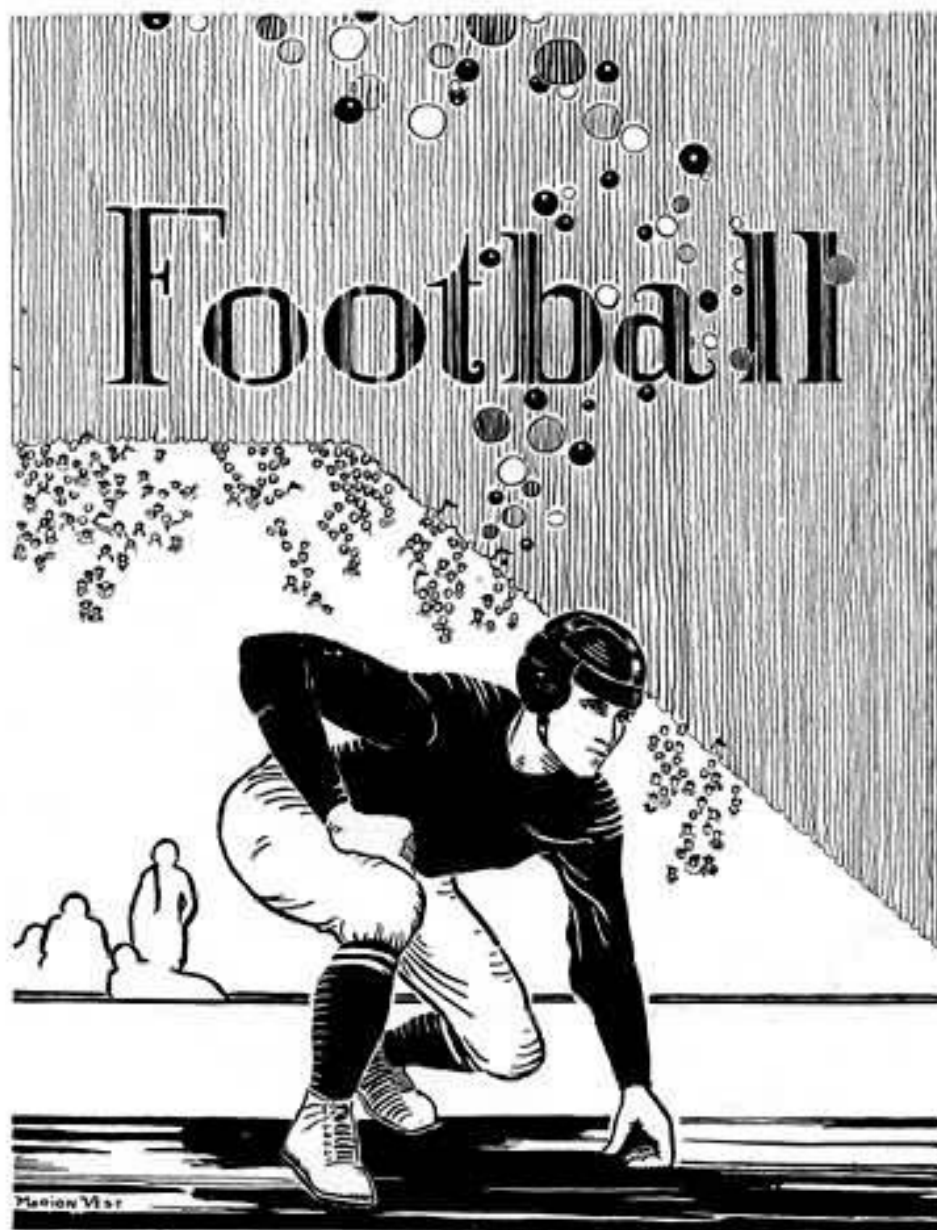
Best Musician
KATHERINE DAVIS

Best Reader
GYPSY WILSON

Biggest Grunch
LEON HOSKINS

Most Popular Teacher
MISS SOLOMON

Best Teacher
MR. HENDERSON



THE PINE CONE

Review of the Season

Despite the fact that the veteran team that wore the Maroon and Gold this season met two reverses to break the ever victorious record of the 1924 team, still the season of 1925 will long be remembered as the most successful that Pineville High has completed. The schedule that faced the experienced band that returned last fall was the most pretentious ever attempted by a southeastern Kentucky team. Of the thirteen letter men of the previous year, ten formed the nucleus of this season's squad, while several reliable second team men were on hand. The expectations that were rightfully placed on these men were amply rewarded when the Pineville colors were carried not only to the top in southeastern Kentucky (for the fifth consecutive time), but also in Central Kentucky. The claims of the "fightin' Lions" can quite honestly be extended throughout the state (outside of Louisville, whose teams fought it out for the national title). Their fame has spread throughout two states, and many friends have been won by the clean sportsmanship and everlasting fight they have displayed. To these revered warriors of old Pineville High, many of whom have made football history for three or four years, and will go out to seek further honors on new fields next June.

The season reached an early climax when the team met Lancaster, last year's Central Kentucky Champs, Knoxville Central, and Lexington, in the second, third, and fourth games. The first was easily handled. Although the offense had not yet acquired power, passes, and Roy's punting, which in this game averaged almost 55 yards, backed by the stubborn defense which has always characterized the Lion's play, caused the downfall of the aspiring down-state team. Playing in a sea of mud at Knoxville, the gang fought inside Central territory for three quarters of the game, and admittedly outfought the home team, except for one lax moment when a flash of red lightning in the person of Pinkey Walden all-southern half, gave victory to the last year's champs of Tennessee. Had not hard luck hit the team in practice for this tilt in the form of our center, or had Lady Luck not been so fickle, the best team might have won. The feature of the game was the charge of the light Lion forwards, who outsmarted the heavy Central highly touted line to nab Walden and Company time after time behind their line.

The Lexington Blue Devils caught us in the slump the following Saturday, Gibson was injured, and a blocked punt behind our goal gave them the game. Again the Goddess of Chance played favorites with the lesser team.

When the team met Harlan three weeks later the offense was functioning with something of the old-time precision, and the steam roller smeared the sod with Green Harlanites, to the tune of 40 to 14.

The two other Tennessee entries that came next on the menu of the Lions had the misfortune to appear when the enraged Lions had reached the peak of machine-like perfection, and were mercilessly smothered.

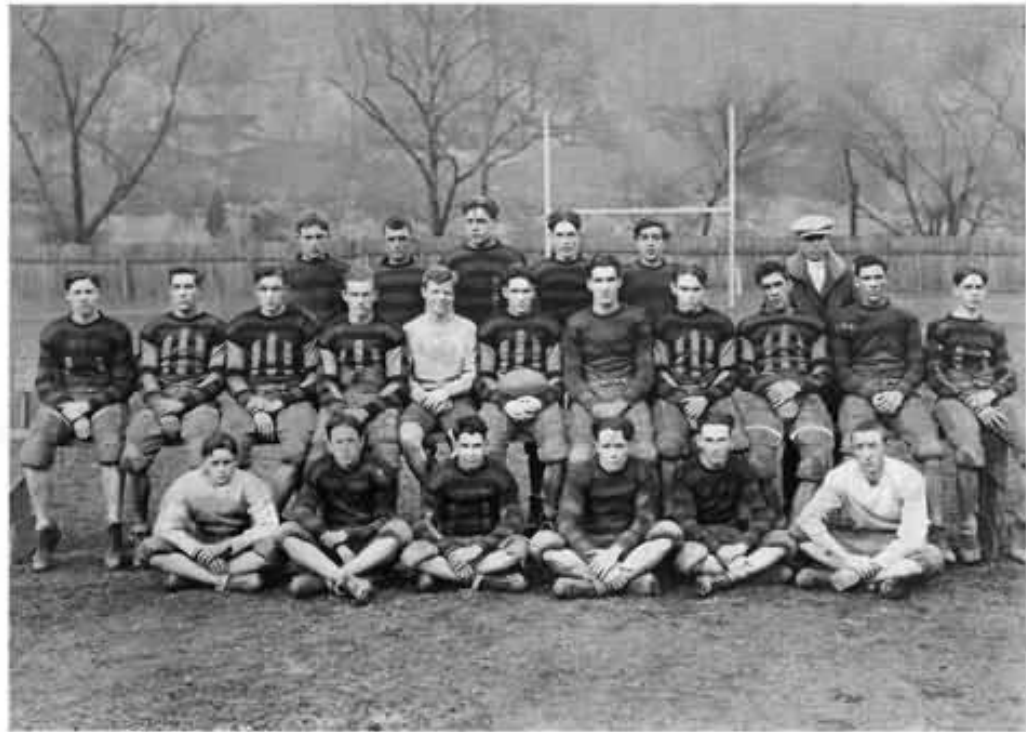
When the challenge of the Mountaineers was accepted by the Royal Purples of Madison County High, Richmond, Central Kentucky Champs, the Lions took advantage of the chance to advertise their wares. In a thrilling game, the mighty and versatile attack of our team won over the aerial attack of the visitors. Thus the brilliant Seniors, Dave, Roy, Jim, Dee, Del, and Pete, ended their scholastic careers in a struggle that will long be remembered as thoroughly testing their high caliber.

SEASON'S SUMMARY

P. H. S. - 26;	Jellico - 0
P. H. S. - 26;	Lancaster - 0
P. H. S. - 0;	Central - 6
P. H. S. - 0;	Lexington - 7
P. H. S. - 50;	LaFollette - 0
P. H. S. - 40;	Harlan - 14
P. H. S. - 62;	Maryville - 0
P. H. S. - 63;	Morristown - 0
P. H. S. - 9;	Richmond - 6
Total P. H. S. 276	Total Opponents 33

SECOND TEAM

P. H. S. - 6;	B. B. L. - 0
P. H. S. - 27;	Barbourville - 0
P. H. S. - 33;	Williamsburg - 0
Total P. H. S. 66	Total Opponents 0



FOOTBALL SQUAD '25

ON THE PINE CONE JAR

THE PINE CONE



PINEVILLE'S FIRST FOOTBALL TEAM, 1920



TEAM OF '21

ON THE PINE CONE



TEAM OF '22



TEAM OF '23

THE PINE CONE



TEAM OF '24



SENIOR VARSITY MEN



H. W. JOHNSON, ATHLETIC DIRECTOR

Three years ago Pineville High was found to be without a coach, and after quite a search Mr. Johnson was located, and signed to take charge of the Mountain Lions. He has proved to be everything and more than he proposed to be when in touch with the position. Coach has given to Pineville three Southeastern Kentucky Championship teams in football, and this year we extended into the Blue Grass and won the championship of both sections. He is rated all over the state, and in the south, as one of the best coaches in the business. He stands for everything that goes to make athletics clean and uplifting, after all, the main thing to be considered in the work.

CAPT. DEE JAMES, QUARTERBACK

For three seasons Dee has quietly, coolly, and cleverly directed the team strategies. His level head, brilliant speed, steady defensive work, and give-all spirit were outstanding. All S. E. Ky. Q. B. for three years, he will leave a great gap in our ranks. His memory will linger for his proficiency in all branches of sport, but most of all for his staunch adherence and devotion to Pineville High ideals. We expect much of him in higher realms.

ABE ISAACS, ASSISTANT COACH

Our worries about help on the field were calmed when Abe Isaacs, the fightin' captain of three seasons ago, was engaged. Abe was a popular mentor because of his high reputation for embodying the real old Pineville spirit, his unbounded interest in the school and team, and his knowledge of the fundamentals that he instilled energetically into the men. His thorough drillings were ever-apparent in the successes of the season. To him is due a great share of the credit of the year. We hope to have him with us another season.



ED SMITH, MANAGER

Ed performed successfully in two capacities, both as manager, and as a star of the second team. In either capacity he gave to his tasks an unbounded energy and earnest devotion. His managerial duties are ended, but he has yet before him two years of promise on the gridiron. He is somewhat handicapped in size, but little difference does that make to a lad of his zeal and sincerity. As a manager, he was faithful and capable; but as a player we have even far greater expectations for him.

ARCHIE ROLLINS, CENTER, END

Three years of service was here rewarded by the captaincy of the 1926 team. Archie's versatility made him an extremely valuable man. From an end position he was shifted on two day's notice to center before the Knoxville game, and passed through the rest of the season in well-nigh faultless fashion. His work at defensive end was impressive in many games. Great possibilities are inherent in Arch.

ROY GIBSON, END

Roy's value was clearly recognized in the loss of the Lexington game, when a severe injury drove him to the side-lines. His punting has for three years been a large item in the famous defense developed, and has won him fame as the best punter in two states. His success in the aerial game also counted heavily. Here is a famous product of strict adherence to patient practice and training, and a devoted spirit. Two years All-S. E. Ky. end.



DELMAS CAWTHORNE, GUARD

Here is an athlete of versatility, that kind that enables an exceptional team to emerge from scarce material. Del's unselfish spirit contributed more than many know, to the upbuilding of a new line that had had two big gaps left in it. During his three seasons he has played at half, full, tackle, end, and guard, all with the exceptional success. But his greatest success was the example he has set for those coming on. "And greater success hath no man than this."

DAVID EARL, HALF

Dave's prowess had already won him an all-state berth in 1924. Although it is not easy to keep up a reputation once made, Dave responded to the expectations of all his admirers in ample fashion. His scintillating runs and inspiring leadership were large factors in the team's success. His work in the Knoxville, Harlan, and Richmond games was outstanding. He made the All-S. E. Ky. team for three years.

JAMES CARNES, TACKLE

Jim's work was an outstanding feature of all of our games, despite the fact that he played with a head-geared, well-rounded eleven. His ability received due commendation after the Richmond game, when Referee Duffy said that there was but one man in the state that could "touch him," Dawson of the National Champs. Manual. His place kicking was as reliable as his defensive work. Lucky is the college that acquires our Jim. Four years All-S. E. Ky. tackle.



ERNEST PETREY, HALF

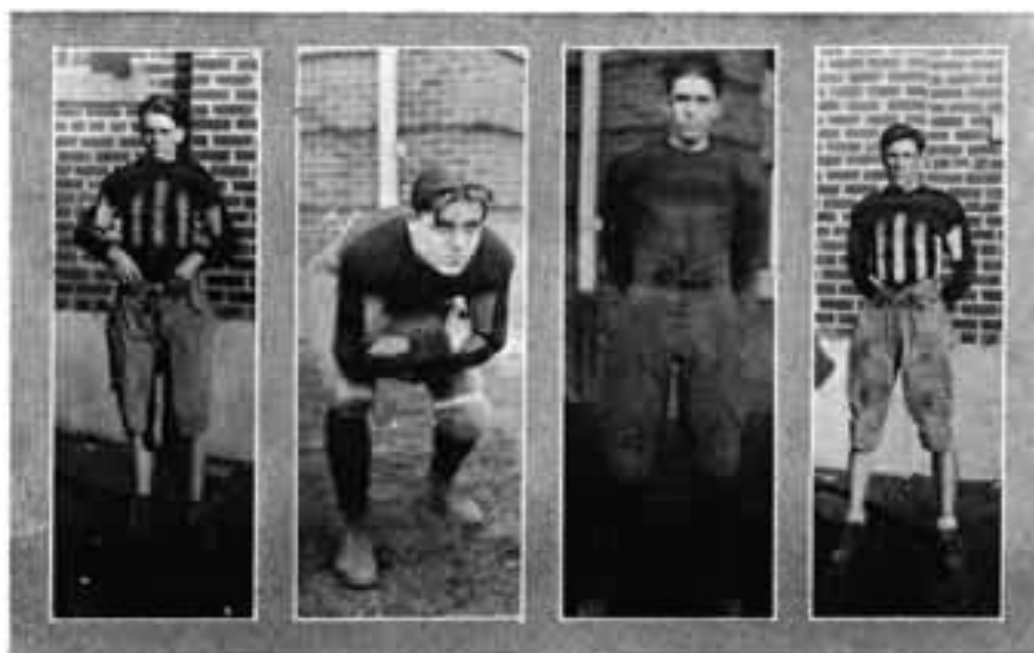
Pete's superb work in the Middleboro game of 1924, will linger in our memories, as will his muntue-man spurts in many other games. The knowledge that Pete was always ready to be called on brought a decidedly calm spirit to all adherents. Though his kicking talent was not often called upon, his drop-kicking brought a world record in the Corbin game of 1923. Pete was another who put all he had into it for P.H.S.

JAMES LANE, GUARD

Jim's encouraging shouts and more encouraging actions were the welding influence in an impregnable defense. Quite slight for a man who backs up the line, Jim nevertheless performed this task equal to any man we met. Jim ran interference in a deadly way, and on the defense hogged a great percentage of the tackles, as he met the enemy at the gap in the line. His indomitable, never dying fight are major assets for the coming season.

TIP HAMMONS, HALF, GUARD

Tip started right off with the first team in his first season of football, and did not miss a game. His remarkable development included the mastery of two positions, and like Del, he gave unselfishly and without stint wherever he was put. With natural assets of speed, grit, and mental keenness, he should go far next year. Take this tip from Tip: "A tireless trainer can make of himself anything he will."



DONALD CAWTHORNE, BACK

"The lad with the slippery heels" has only occasionally had a chance to show in big company, due to the comfortable quantity of backfield stuff this season, but he has captained the second team to an undefeated and unscored on season. Our predictions are being withheld, but our admonition is—watch this boy the next season, for which he has faithfully been grooming for two years.

EARL KIRK, TACKLE, FULL

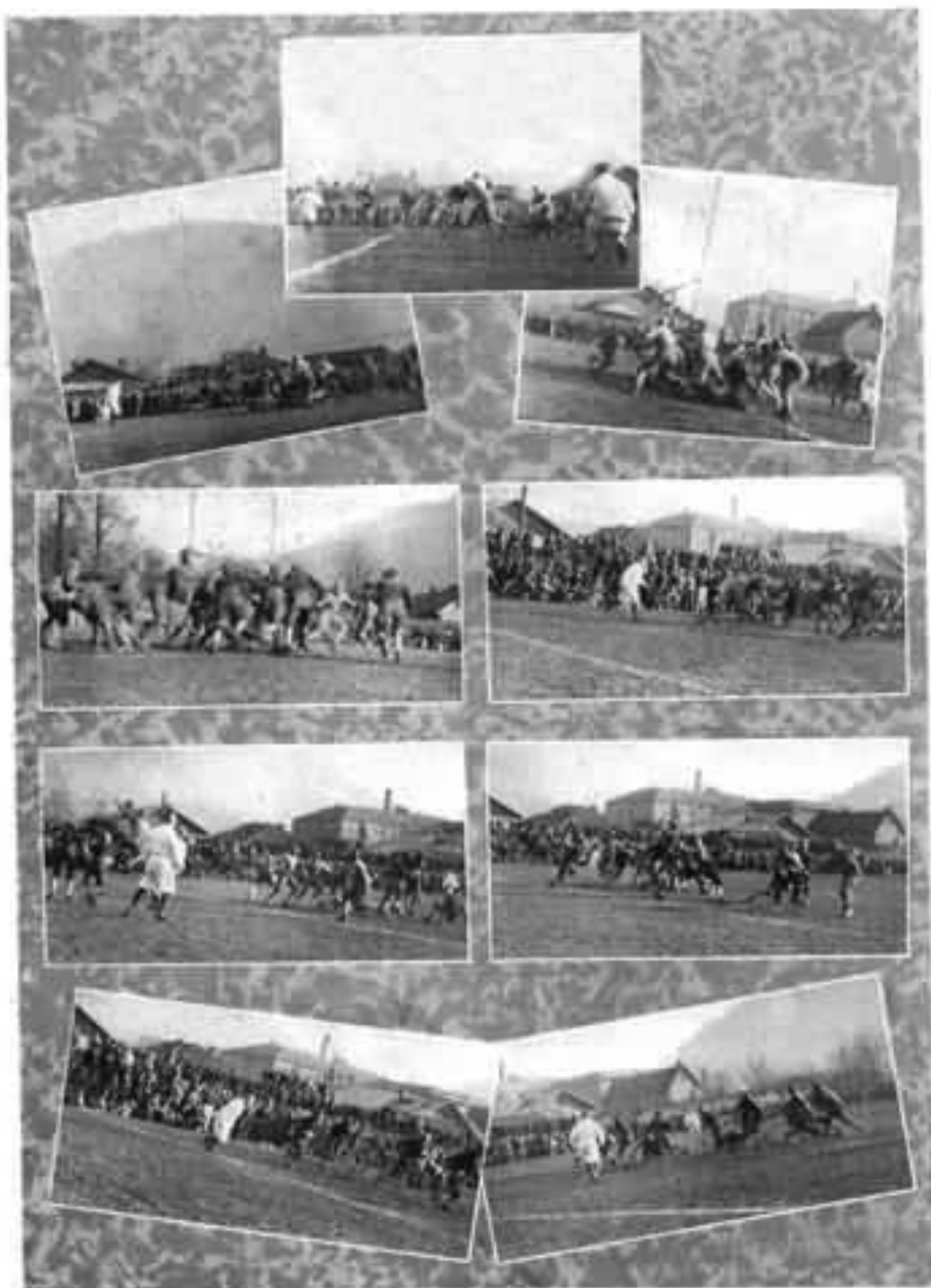
"The wild bull of the Pineville campus" snuck out his square jaw and cowed everything that came his way into submission. Our sterling tackles were our keystones in a stone wall defense. Possessed by nature with a brawny physique, and natural speed, Earl butted opposing lines into submission with his powerful smashes. The All-S. E. Ky. tackle berth fell to him two years with little dispute.

SOL CARNES, GUARD

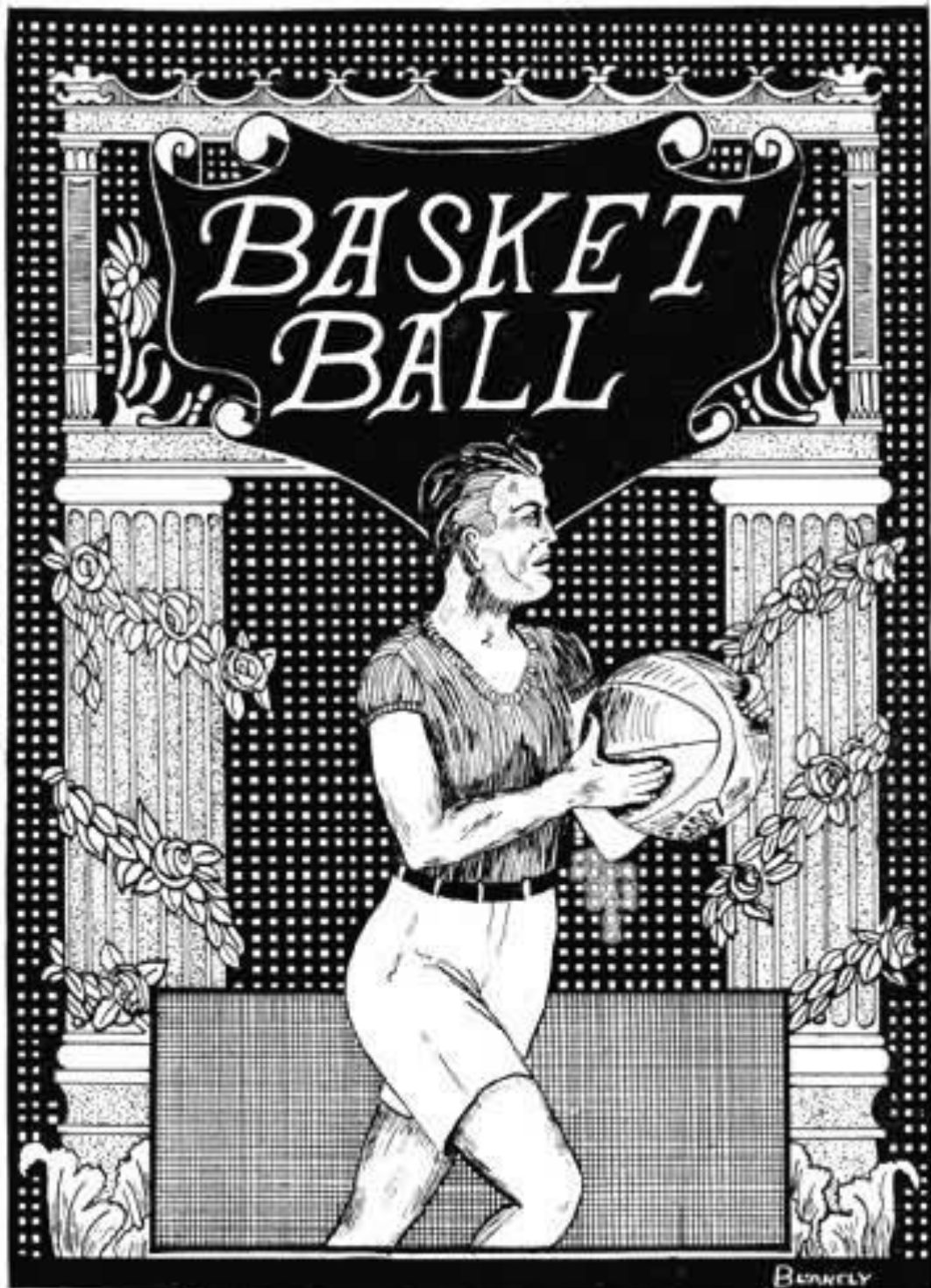
"Ol Sol" blazed forth in all his glory in the Knoxville game, and thence afterward in several games, excepting when his light was dimmed temporarily by some scholastic difficulties. He is a true Carnes—muff sed. And particularly in the Knoxville game, when Red met Red—Pinkey went down for the count with a resounding crash. When he asked what it was all about, reply—"Oh, that was just one of those Carnes boys, that's all."

HERBERT BRACKETT, TACKLE, GUARD

Foyster Miracle's illness and Dan Johnson's injury brought dismay and almost despair to the coaches, who had worried over the filling of the great gaps in the forward wall, left by the graduation of Big Boy and Flem—until Herb stepped into the breach on two day's notice, and was "made" in the Knoxville game. Initiated in the mad and bitterness of that battle, he came out with the true Pineville fight, and vows he will spend the rest of his days, like Flem Smith and Tip, imbibing it in Weenie and other Wallsend stars. Next season will see him at his best.



CHAMPIONSHIP GAME



Review of the Season

GIRLS

The season of 1925 closed with stars in the crowns of those who had taken part in the annual district tournament, as we, much to the surprise of every one, had gone to the finals, only to beaced out by Williamsburg by three points. This being the first year of basketball for Pineville, everyone was very proud of the accomplishments of the team.

Then at the opening of the 1926 season everyone was in good spirits, as we had lost only one member of the regular team. We could just see Pineville going through the season with a number of victories and then coping the tournament, and on to take part in state honors. But something is always taking the joy out of life, and this was no exception, as it turned out that some of the lettered girls of last year could not come out, due to various reasons. Some others that were willing on the floor were not so ambitious in the classroom, therefore, tardiness kept one or two off the team. To make a long story short, we had three letter girls around which to build our 1926 team, and very little material to select from.

Captain Grace Stone, Marie Howard, and Louise Ashe formed the nucleus around which our team was to be constructed. In addition to these, there were one or two members of the squad from the season's left overs, that formed the team, along with several Sophomores. The girls were all soon down to real work once the call sounded to practice, and when the first game of the season was played we found that the B. B. I. team had swamped us by the top-heavy score of 22 to 4. We were not downhearted in the least, but merely worked that much harder. Soon the strong team from Barbourville High came to town and again we were beaten, but only by a score of 14 to 9. Some improvement over the first game.

The first trip of the season was taken then and in these games two entirely unknown players were given their chance to make good, namely Margaret Whitaker, and Elizabeth Bowman. They, along with the other members of the team put Pineville in the winner's column against Benham, only to lose the next night to Lynch, since one or two of the players were on the sick list.

Until this time we had been without the services of Mae Hollingsworth, an All Eastern Kentucky forward the year before. Then further trouble encountered our squad as our fast improving center, Mary Lindsay Bradley was taken sick and had to be out of the next two or three games. But not to be outdone, the team stepped right out and won from Marysville, then on to London, only to lose a hard game after a hard fight. Several games were then played with steady improvement on the part of the "Lionesses," the team just about breaking even in terms of games won and lost.

Then mid-year examinations came and some of the already crippled team failed on their work, which took in Whitaker, Hollingsworth, (who had finally become eligible) Detavia Hoskins, and others off the squad, leaving exactly seven players with which to enter the tournament to be held at London. The other girls on the squad, with a grim determination and fighting spirit that comes to Pineville teams only, decided that the thing to do would be put over anyway, and went in with more work than ever. The team was looking good for the district meet, only to be floored again, the day before the first game, by losing our center and backguard, Mary Bradley, through sickness again (that throat of hers). With a patched up team we won and lost one in the meet, thus ending the second season of basketball for Pineville High, with a record not so bad after all.

For next year's outlook it seems, at this writing that the prospects are fine, if the ineligible will only get busy and get up their work so they can be of some service to the team. Yet, we realize that the places left vacant by Grace Stone, Mary Bradley, and Louise Asher will be hard to fill. So our plea at this time is Work, Work, and get a greater number of prospective players out for practice now, that they may pick up points that will be of help for another year. We should have at least twenty out for the team.

THE SEASON'S SUMMARY

P. H. S.	=	=	=	=	=	=	=	=	=	4;	B. B. I.	=	=	=	=	=	=	=	=	=	22	
P. H. S.	=	=	=	=	=	=	=	=	=	9;	B'ville High	=	=	=	=	=	=	=	=	=	=	14
P. H. S.	=	=	=	=	=	=	=	=	=	15;	Benham	=	=	=	=	=	=	=	=	=	=	3
P. H. S.	=	=	=	=	=	=	=	=	=	9;	Lynch	=	=	=	=	=	=	=	=	=	=	14
P. H. S.	=	=	=	=	=	=	=	=	=	10;	Maryville	=	=	=	=	=	=	=	=	=	=	7
P. H. S.	=	=	=	=	=	=	=	=	=	14;	B'ville High	=	=	=	=	=	=	=	=	=	=	20

Total P.H.S. 61 Total Opponents 80

P. H. S.	=	=	=	=	=	=	=	=	=	19;	Harlan	=	=	=	=	=	=	=	=	=	4	
P. H. S.	=	=	=	=	=	=	=	=	=	12;	London	=	=	=	=	=	=	=	=	=	=	22
P. H. S.	=	=	=	=	=	=	=	=	=	16;	Corbin	=	=	=	=	=	=	=	=	=	=	9
P. H. S.	=	=	=	=	=	=	=	=	=	5;	B. B. I.	=	=	=	=	=	=	=	=	=	=	15
P. H. S.	=	=	=	=	=	=	=	=	=	8;	London	=	=	=	=	=	=	=	=	=	=	12
P. H. S.	=	=	=	=	=	=	=	=	=	16;	Harlan	=	=	=	=	=	=	=	=	=	=	6

Total P.H.S. 76 Total Opponents 68

DISTRICT TOURNAMENT

P. H. S.	=	=	=	=	=	=	=	=	=	26;	Brodhead	=	=	=	=	=	=	=	=	=	4	
P. H. S.	=	=	=	=	=	=	=	=	=	7;	Manchester	=	=	=	=	=	=	=	=	=	=	15

Total P.H.S. 33 Total Opponents 19

GRAND TOTALS

P.H.S.	170	Opponents	167
--------	-----	-----------	-----



GIRLS' BASKETBALL SQUAD

ON THE NINE LONGER



L. C. HENDERSON, COACH

"Louis," formerly a star on the Mississippi State team, has proven a very efficient coach of the girl's team. He has coached us with unending patience, and has given us a good example of good sportsmanship. And he has shared with us our defeats as well as our victories. Taking over the girls' team at the middle of the '25 season, he led them to the finals of the district tournament. We hope that Pineville's future girls' teams will have the opportunity of having such a capable and patient coach.

GRACE STONE, GUARD

For two seasons Grace has been one of the out players of the team. This year as Captain, she earnestly and conscientiously went about her task to give Pineville the best team she ever had. Her work throughout the season has been one of the high points of the team. Always fighting for all she is worth, for the team and school, wholly unselfish in her deeds is this girl. Grace is a natural leader and one of the best guards in southeastern Kentucky. In selecting an All-Southeastern Kentucky team she would be about our first choice.

LOUISE ASHER, GUARD

When the whistle blew for the beginning of each game you could always count on Louise to be there, ready to do her part, and that was a big one. This is her second and last year on the team as she graduates this year. We hate to see her leave us, but we hope for better things for her. Louise is a hard and earnest worker, and liked by everyone that knows her. She improved as the season progressed, and really reached the peak of her career in the district tournament. She has the distinction of being the only girl to take part in every game for the past two seasons, which is a record within itself.



MARIE HOWARD, FORWARD

The midget forward of eastern Kentucky is Marie, yet she is one of the outstanding players in the district. She is high point girl for the team, and was one of the best offensive players to show at the tournament. We are glad that Marie has another year with us, and predict a wonderfully successful season for her. She can easily win the admiration of everyone with her pleasant smile, and she just keeps going right on even though things may be going against her in the game. This shows her good sportsmanship which characterizes all of Pineville's teams and players.

MARY L. BRADLEY, CENTER

This is Mary Lindsay's first year on the team as a regular, yet she has been a very important cog in both the offensive and defensive team work. Due to illness she was unable to take part in all games, her absence being greatly felt, too, especially during the tournament, as we had counted a great deal upon her defensive work. Mary had the ability of pulling the ball out of the other team's basket, which saved many goals by opponents and kept us on the offensive much of the time. We regret to lose her through graduation, and realize what a task we will have in filling her position next year.

GYPSY WILSON, FORWARD

Gypsy has more natural ability than any member of the squad, and although this is her first year on the squad, she has been a very important part of the workers that make up a team. She plays a good and hard game, and with another season's work, we predict that she will make one of the best players Pineville has ever had. Just watch her shine for the school and team next year. Of one forward we can be assured, and we feel that it will be rightly taken care of.



MARGARET WHITAKER, CENTER

This is Margaret's first year at basketball, but to watch her play the latter part of the season you would think she had played many seasons. She showed more improvement as the season passed than any other member of the squad, all of which speaks well for her future. She is one of a good number of Sophomores, and we are expecting to put Pineville on the map in the way of a girls' team in the near future. She, with plenty of hard work, will make a real center in another year, both offensively and defensively.

ELIZABETH BOWMAN, FORWARD

Elizabeth is another that was taken in the early season as being more or less an "in and out," yet, as time passed, she developed into one of the mainstays of the team. She too, is only in her Sophomore year, which means that before she has graduated we can expect great things from her.

Review of the Season

BOYS

The Lions approached their second year of basketball with rather high expectations, for the entire 1925 team was back in school, besides one or two newcomers of promise. Also, the previous season, which was Pineville's first in several years, had developed little material so that we were led to anticipate the competition by which champions are made. The end of the schedule, however, finds us lamenting over a series of scholastic difficulties and misfortunes that nearly annihilated the squad, and lost for us what we intended without doubt, to have been a free trip to Lexington, to represent this section at the state tourney. But now, though our hopes and ambitions for this season have been blasted, with the traditional Pineville spirit of ever pressing forward, no matter what may temporarily hinder, we already turn our faces "toward the east," and are building hopes for next year, with our faith in the material that has been rapidly developing for two years, and is due next winter to "strut its stuff."

Ineligibility fairly brushed aside Golden and Rufus Wilson before the season began. The former had proved valuable the winter before, and the latter had performed creditably for Frankfort. Two more letter men were lost before the team had played four games. But despite these losses of two first team guards and a forward, the team struggled through seven consecutive wins before being halted by London.

Noteworthy among the early games was the trip to the interesting Becham-Lynch section, and a 30 to 17 win over Harlan. The London game played at London, saw our boys even at the half, 14 to 14. But the lack of reserve material of strength saw this lead sagged in the final session. The mid-year exams had taken their toll by this time, both in men and morale; and LaFollette trounced a demoralized team there by an overwhelming score. The best game of the season, from the spectator's standpoint, was the game with the Barbourville Baptists, that required two overtime periods. This game, played in the Barbourville Armory, was a hectic session in which Lady Luck finally picked the Baptists as winners, 25 to 24.

During this period the combination was undergoing a remodeling process, due to the fact that both forwards were now mowed down by ineligibility, leaving no experienced men for those positions. Consequently, we lost two games to teams that we had already beaten, Barbourville Baptists and Harlan. However, Ed Smith and Don Cawthorne proved amply competent to handle the positions assigned them, while Ernest Petrey, who had come out late, picked up the game so fast that he stepped into the breach and protected the opponents goals in a very able manner. It is only regretted that the season was late when this combination began to develop, as it showed great promise. The fact that the schedule this year was designed for a veteran team also had its drawbacks. The rapid progress made by this combination in the two weeks it was together, and its play in the tournament bids well for next season. It was rounded out by Tip Hammons, all-tournament guard, and Roy Gibson, high point man of the tourney and all-tournament center. Roy is the only man to graduate from this team, yet his loss will be a great one. Through a mighty hectic and in some ways discouraging season, he has guided the team to what, from standpoint of victories and losses, can be acclaimed a successful season.

The greatest success, however, came when the team was awarded the Sportsmanship trophy at the district meet. After all, that is the aim of Pineville High athletics—to develop sportsmanship—and this award brought a most successful ending to the winter sport.

A faithful squad was developed with a nice development throughout the season. Hoskins, Green, Roberts, Isaacs, Bird, Strunk, and Baker will furnish ready material for next season, along with others. Old man Ineligibility, the bog-tail of Pineville teams, another year will have the hardest battle he ever waged, if we may believe the votes of the eight or nine squad members whom he tested this year.

THE SEASON'S SUMMARY

P. H. S.	-	-	-	-	-	-	-	-	-	35;	Barbourville Baptists	-	-	-	-	-	-	-	-	-	15
P. H. S.	-	-	-	-	-	-	-	-	-	26;	Barbourville H. S.	-	-	-	-	-	-	-	-	-	22
P. H. S.	-	-	-	-	-	-	-	-	-	30;	Benham	-	-	-	-	-	-	-	-	-	15
P. H. S.	-	-	-	-	-	-	-	-	-	20;	Lynch	-	-	-	-	-	-	-	-	-	16
P. H. S.	-	-	-	-	-	-	-	-	-	25;	Maryville	-	-	-	-	-	-	-	-	-	21
P. H. S.	-	-	-	-	-	-	-	-	-	18;	Barbourville H. S.	-	-	-	-	-	-	-	-	-	7
P. H. S.	-	-	-	-	-	-	-	-	-	30;	Harlan	-	-	-	-	-	-	-	-	-	17
P. H. S.	-	-	-	-	-	-	-	-	-	19;	London	-	-	-	-	-	-	-	-	-	33
P. H. S.	-	-	-	-	-	-	-	-	-	33;	Corbin	-	-	-	-	-	-	-	-	-	18
P. H. S.	-	-	-	-	-	-	-	-	-	35;	LaFollette	-	-	-	-	-	-	-	-	-	35
P. H. S.	-	-	-	-	-	-	-	-	-	24;	Barbourville Baptists	-	-	-	-	-	-	-	-	-	25
P. H. S.	-	-	-	-	-	-	-	-	-	7;	London	-	-	-	-	-	-	-	-	-	27
P. H. S.	-	-	-	-	-	-	-	-	-	14;	Harlan	-	-	-	-	-	-	-	-	-	30

TOURNAMENT

P. H. S.	-	-	-	-	-	-	-	-	-	-	Brodhead	-	-	-	-	-	-	-	-	-	21
P. H. S.	-	-	-	-	-	-	-	-	-	-	Mt. Vernon	-	-	-	-	-	-	-	-	-	13
P. H. S.	-	-	-	-	-	-	-	-	-	-	Harlan	-	-	-	-	-	-	-	-	-	39

Total P.H.S.

373

Total Opponents

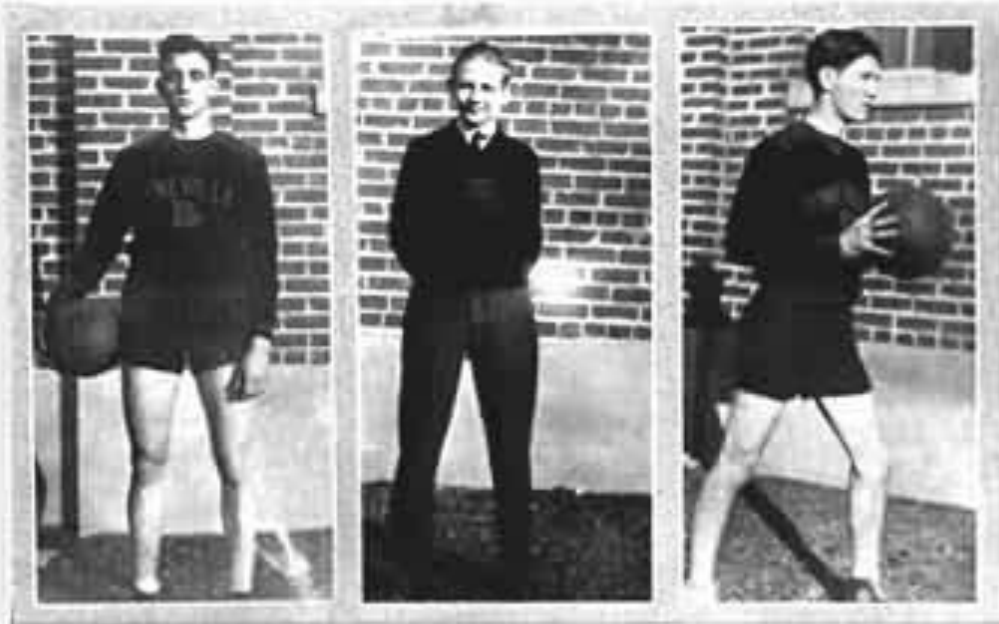
354

Games won: 10

Games lost: 6



BOYS' BASKETBALL SQUAD



CAPT. ROY GIBSON, CENTER

Roy's mettle stood the test, when, with his three Senior teammates cut off from the team, he carried on without complaint, doing his utmost to bolster the blasted morale. His efforts bore fruit when the team staged its come-back at the tournament, while his clean leadership was rewarded with the Sportsmanship trophy. Although deprived of his accustomed combination, he was the peer of centers that we have met, in two years having met but one center who could out-jump him. The center position presents a big problem for next year.

BURICE NORROD, MANAGER

"Spice" spent many leisure hours in the gymnasium, performing his many urgent duties as "assistant coach." His many and varied duties included everything from the menial task of toting the balls, to the high duty of giving a few pointers to our stars. All of these he did most efficiently. Every team needs its clown, for the sake of morale, and Burice doubled his duties by often performing in that capacity. His genial and oft-heard voice will be missed another season, as will his faithful performance of the many drudgeries of his job.

DEE JAMES, FORWARD

Few faster men than Dee have been seen in this section on the basketball floor. Possessed with a nice eye for the basket, and a world of basketball sense, Dee was a great power to the team. In his two seasons he has been a mainstay in the scoring combination, and his loss in mid-season was a severe setback to the outfit. He should go far in college basketball.



TIP HAMMONS, GUARD

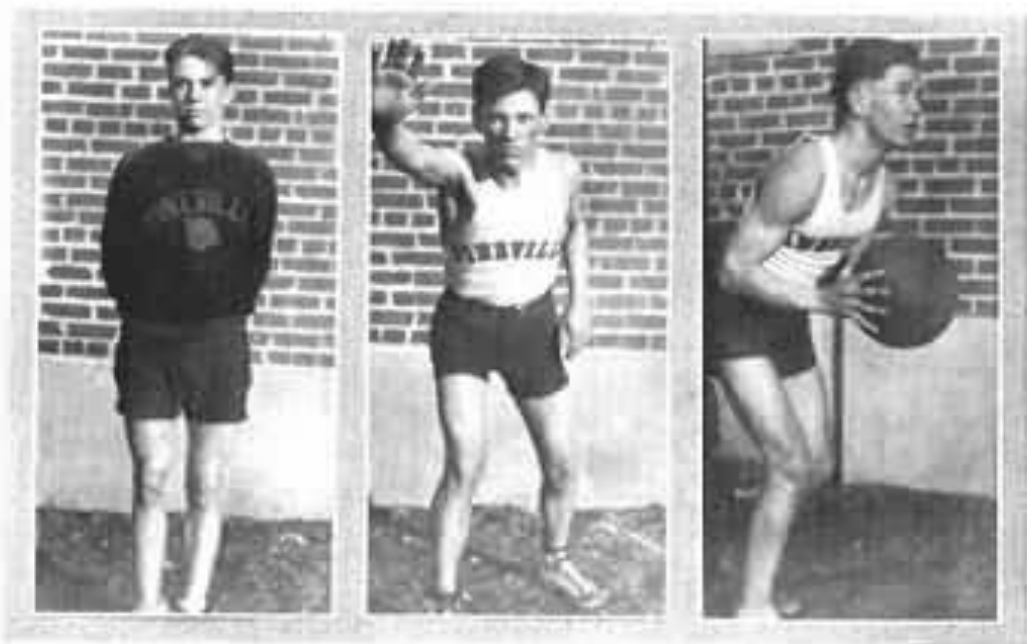
Tip has been a mainstay of the team since he reported absolutely new at the game, last season. He is blessed with speed and natural shiftiness, and the ability to absorb the technique rapidly. A large share of the responsibilities of next year's team will revolve about Tip.

BUD SMITH, FORWARD

The first of the famous Smith Brothers (minus their famous beards of the cough drop ads) was given the assignment at a forward berth, where he performed last year. Though handicapped in size, Bud took a prominent place in the floor play, and contributed many points by his keen eye, until forced to the sidelines. He has two more years of great promise.

ERNEST PETREY, GUARD

Ernest surprised himself and all but the coach by earning a letter, although coming out for his first attempt at basketball in this, his Senior year, and joining the squad late at that. Having the intention merely to work up to track, he got to work in earnest (for his name is well chosen), and jumped into the gap at guard, under the heavy pressure of circumstances. A month more would have made him all-tournament timber.



DON CAWTHORNE, GUARD, FORWARD

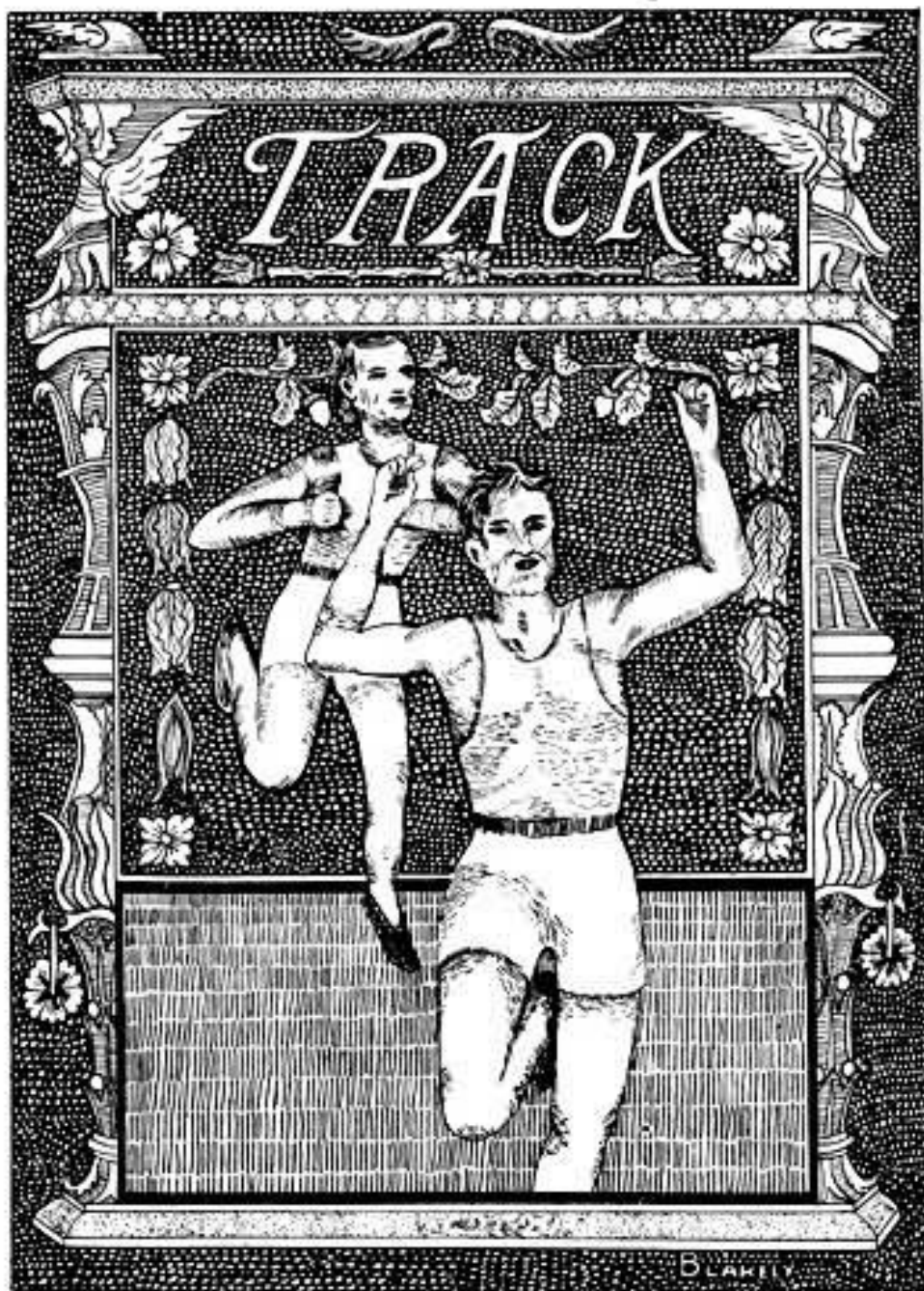
Starting at the guard position, Don soon became an important cog in the offense, playing a pretty floor game, and becoming an accurate shot. His long shots saved the Barbourville H. S. game. When, through necessity, shifted to forward, he fitted in just as ably there. Probably no member of the team has shown as great development throughout the season. Next winter much is expected of him.

HERBERT BRACKETT, GUARD

Herb is another who is finding himself. Faithful effort was rewarded when he was called to hold down the back guard job. In the London and Harlan games, Herb performed like a veteran, fitting ably into the team work. This season's work will well prepare him for his remaining year.

ED SMITH, FORWARD

Second of the famous brotherhood, replaced his brother late in the season. Once given a chance, Ed displayed his wares in such fashion as to win a pretty good claim on a berth for next year. This lad was another who showed unusual development, due to consistent effort. He is one of the cleverest men with the ball who has ever worn a Pineville uniform. This new discovery will shine in the basketball firmament for two more seasons.



Review of the Season

FOR 1925 TRACK

Pineville's second season at track was a considerable improvement over the first. There is still, however, great room for improvement; and this will come only when the interest in the sport, which is steadily growing, but slowly, reaches the heights that football interest has. There is plenty of good material in the school, if only given a chance to draw itself out. No sport would better advertise the school.

The season began early in April, with all the five letter men back. I. Wilson in the weights, Gibson in the hurdles, Earl in the dashes, vault, and broad jump, Carnes in the discus and hurdles, and James in the middle distances, formed the nucleus of the squad. Of these, the latter two, however, did not find time to pursue their track work and soon dropped out. Petrey, Del Cawthorne, Tip Hammons, and Ed Wilson, however, were men who performed consistently, while Patterson, Jim Bird, and Earl Hammons picked up points that were much needed.

The first track trophy was brought to P.H.S. when the boys won the first Annual Tri-State Track Meet, sponsored by Lincoln Memorial University. With a well rounded performance scoring heavily in every event, the Lions amassed a total of 69 points, L.M.U. 38, Jonesville 3, Ewing 5, Walnut Grove 5, Barbourville H. S. which was also entered, failed to score. Wilson won the shot, and was second in the hammer throw, and second in the high hurdles. Gibson garnered a second in the shot, first in the high hurdles, and tied with Patterson for a second in the high jump. Dave Earl sacrificed his tie for a high point medal by allowing his teammate, Hammons, to tie him in the 220 for second place, having won the broad jump, placing him second in the 100 yard, and third in the pole vault. Del won the 440, and took second in the half-mile, Petrey running a close third. Both boys were running in their first meet. Jim Carnes won the hammer throw, a new event for our boys, and Jim Bird came in third in the mile. The Pineville Relay Team, composed of Earl Hammons, Cawthorne, and Petrey, proved themselves good mud slingers by swallowing home first.

The L.M.U. Meet on April 25th, was followed by a trip to the Tennessee State meet at Knoxville, the next week. Craving experience in fast competition, the boys certainly got it, being barely able to snatch a point by Gibson's fourth in the high hurdles, although a bad leg without a doubt robbed him of a higher place. This injury cut short his track season of promise at this point.

Still seeking the knowledge that comes only from high-class competition, the next week saw the boys at Georgetown, where the Kentucky State meet was held. As before, a single point kept us in the point column, Big Boy heaving out the iron sphere for a third place. Cawthorne and Petrey made respectable showings by fourth and fifth in their respective heats, just outside the money.

The Second Annual Cumberland Valley Meet at Pineville failed to attract any larger list of entries than it did last year. L.M.U. was the only team to be inveigled to combat, although all the schools of this section were invited. The result was 64 to 51 in our favor. Ed Wilson's steady improvement in the pole vault won him first in this event.

A nice schedule of meets has been arranged for the 1926 season, which is just commencing as this is written. We are hoping for greater support and greater interest, and are sure that when these come, that Pineville will be well advertised by her track team. Below are records that we are not particularly proud of, but which we publish as a matter of record, and as a stimulus to future track stars.



TRACK SQUAD

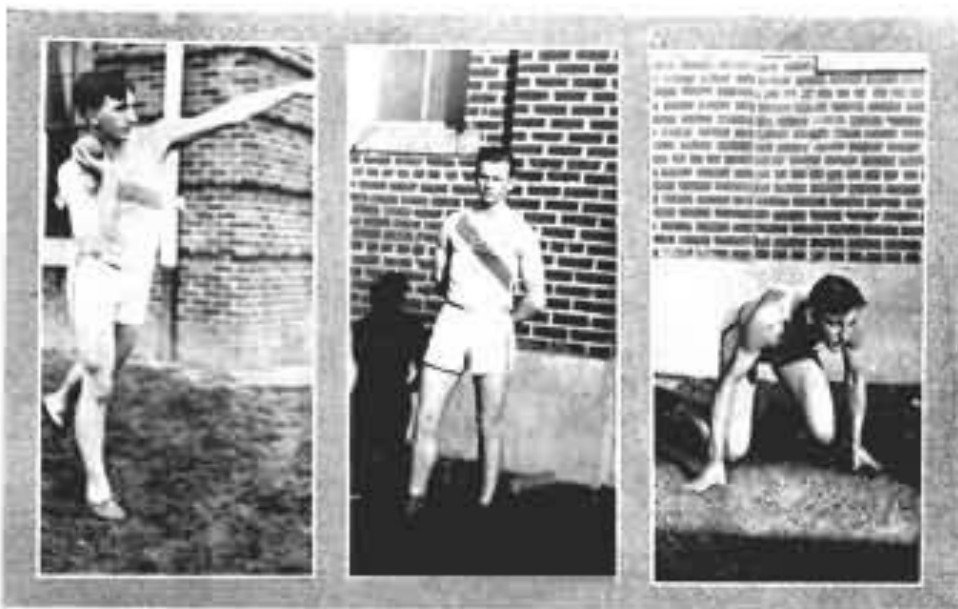
Cumberland Valley Meet Records

Mile Relay	4:02.8	(Pineville, 1925)
50	5.7	(Chesney, Middlesboro, 1925)
100	10.4	(Daffron, L.M.U., 1925)
220	25.7	(Underwood, L.M.U., 1925)
440	2:22	(Del Cawthorne, P.H.S., 1925)
440 (quarter mile)	58.3	(James, P.H.S., 1924)
880 (half mile)	2:22	(Del Cawthorne, P.H.S., 1925)
Mile	5:25	(Lambert, Middlesboro, 1924)
120 High hurdles	19.2	(Gibson, P.H.S., 1924)
220 Low hurdles	30	(Earl, P.H.S., 1924)
Pole Vault	9 ft. 3 in.	(E. Wilson, P.H.S., 1925)
Shot Put	41 ft. 3 in.	(L. Wilson, P.H.S., 1925)
High Jump	5 ft. 5 in.	(Brown, Middlesboro, 1924)
Discus Throw	103 ft. 4 in.	(L. Wilson, P.H.S., 1925)
Broad Jump	19 ft. 6½ in.	(Underwood, L.M.U., 1925)
Javelin Throw	130 ft. 11 in.	(James, P.H.S., 1924)

P.H.S. Track Records (better than those above)

100	10.4	(Chesney, Middlesboro, 1924 dual meet. Joint holder with Daffron)
440	:58	(Euster, Middlesboro, 1924 dual meet)
220	:25	(Chesney, Middlesboro, 1925 dual meet)

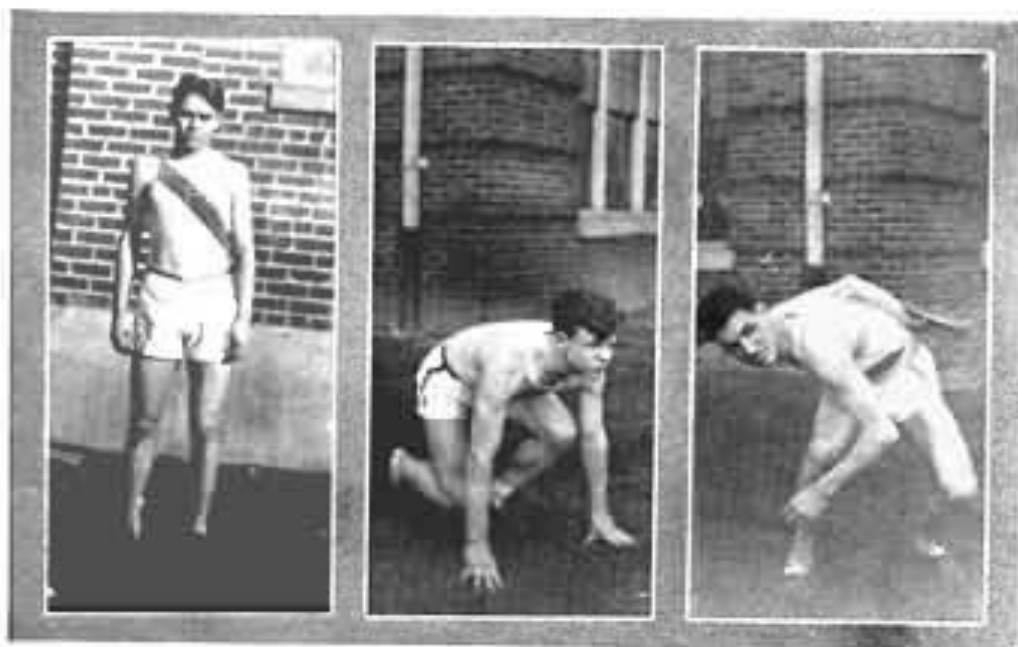
ON THE FINE GENE



LEROY WILSON—"Big Boy" was the Hercules of the squad in throwing the little round pill with quite an abandon when used he became riled. He was a consistent winner in his events in the lesser meets, and for two years straight placed third in the State meet, under heavy competition. In his last meet he suddenly became careless with the discus also. He is sorely missed this season.

DELMAS CAWTHORNE—"Deb" performed consistently in the 440 and 880, winning these events in both the L.M.U. and Cumberland Valley meets, and finishing very close to a place in the Interscholastics, a creditable showing for his first season. His consistent performance and earnest effort won him the captaincy of the 1926 season.

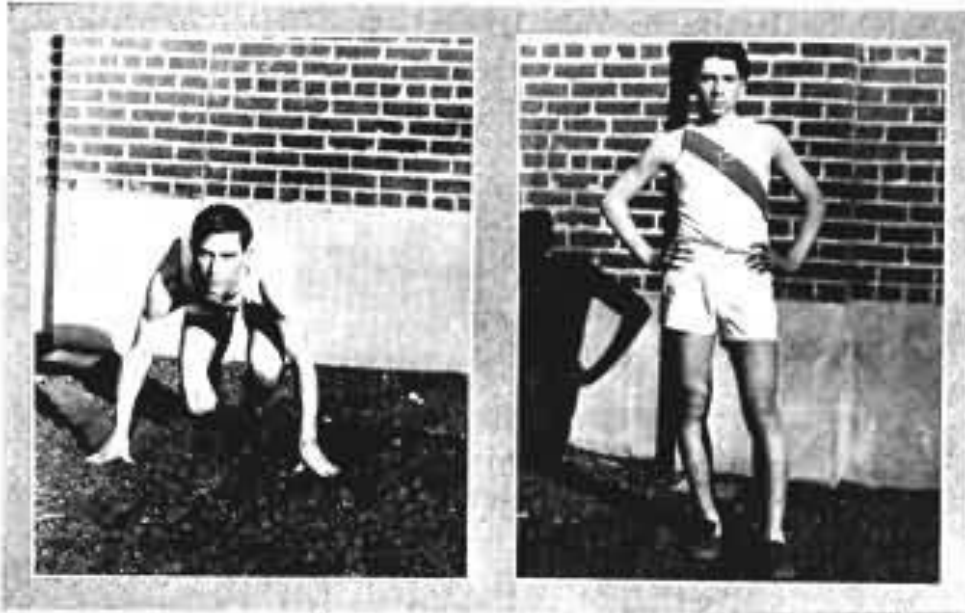
ROY GIBSON—This was an unfortunate season for Roy. Before the first meet at L.M.U. he had pulled a muscle, an injury which greatly handicapped him in this meet, and caused his withdrawal after the Tennessee meet. But for this injury his work in the high hurdles and high jump bore promise of several points. We have high hopes of his last season.



ERNEST PETREY—Pete's earnest endeavor in the 880 contributed points in two meets. His strict habits of training have always been an asset that carried him far in all sports. Running nice races, almost inside the money, in both the big interscholastic meets, real results should mark his last season.

DAVID EARL—Dave's all-round efficiency counted for many points in the pole vault, sprints, relay, and low hurdles. His versatility extended also to the javelin throw. Dave has been a consistent and faithful trainer. His exemplary conduct when he allowed a teammate to tie him for second place in one meet, even when losing a high point medal, is highly commendable to the future athletes of P.H.S. This unselfish spirit will make great teams.

JIM CARNES—Jim's specialty was the discus throw the year before, but heavy duties kept him out of competition this year, except for the L.M.U. meet, which he helped us cop by winning the hammer throw, a new event to him and to all of us.



TIP HAMMONS—Tip ran the 220 and 440, and contributed points in two meets. Experience should be a big factor in his development this year. He has two big seasons ahead of him and he will make good use of them. Here is another example of steady work and careful training.

EDWARD WILSON—The baby of the team specialized in the pole vault and soared over the pole for points in a couple of meets. With experience and three more seasons in which to gain it, Ed ought to furnish P.H.S. with some State laurels before he is through.

JIM JEFFRIES, Manager—Jim specialized in ditch digging and seemed to enjoy it (?). He handled the handyman job in good shape, whether it meant picking cinders out of some fellow's epidermis or clerking at a meet. The only time he did groan was when he was hanging onto one end of a shovel, and then we admit it might possibly have been his muscles. Jim was indispensable, for all of that.



LETTER CLUB



The Pineville Athletic Association

No annual would be complete without an expression of our deep appreciation of the work of the group of townsmen who have voluntarily undertaken to support our athletics. Athletics for Pineville High had their inception in a small group of business and professional men of our city, five years ago. Since that time, this group, though somewhat augmented by constant additions, has stuck tenaciously and very successfully to the job of building up the athletics in this school to the highest possible plane. Though yet far from realized, this objective grows closer each year; and this high aim has succeeded in placing P.H.S. athletics far above the standard for a school of its size.

Lest some might take the idea that the aim of this organization is to advertise the town through winning teams, let it be stated that the men of this association are men of the highest ideals who go down into their pockets because they believe in the physical development of the youth of this city, and believe first of all in furnishing wholesome occupation for the student's idle hours. If winning can be effected at the same time that these aims are carried out, then well and good; but that is secondary.

Mr. R. M. Watt, president of the Association for the last two years, has given of his time, money, and interest unstintingly to further the interests of this organization. With him during this time has been associated Mr. J. T. Bradley, as secretary and treasurer. This has proven the most effective team that Pineville have ever placed on the field. Under this regime the athletic field has been brought up to the point where it is the equal of any high school in the state, bar none. (We take the word of the Richmond authorities for this.) They have liberally equipped our enlarging program of athletics upon a sound and paying financial, as well as physical basis.

Mr. Ed Samuels, the first president of the P.A.A. has also the distinction of being the "daddy of Pineville football." His genial nature has endeared him to all his "sons and daughters," and his generosity and enthusiasm have been limitless in giving impetus to this organization. Harry Isaacs, present vice-president is another live wire to whom we owe much. His particular task has been advertising, which he has handled in good style. We of the high school are indeed humbly grateful for the efforts of these men.

INTRAMURAL ATHLETICS

Not the least part of an athletic program that is rather extensive for a school our size has been our intramural system. This has been the link between the required physical education program and our varsity teams, carrying out the idea of athletics for all, and furnishing much valuable timber for varsity competition. For lack of coaches our program is not as extensive yet, as we would like to see it; but when over 100 people, harring varsity men, compete in an Annual Field Day, as last year. We are engaging a goodly percentage in wholesome recreative sport.

Over 50 of these 100 people shared the prizes last Field Day, which was the second annual affair of its kind. The Sophomores were victors in the Class A division, which included the four high school grades. The 8 B room captured the honors in Class B, composed of 7th and 8th grades, while the 6 B room won the Class C pennant. Mae Hollingsworth, Soph, earned the flag as high point girl, and Ben Golden, of the same class, headed the boys. The 7 B room received the chief award—for best sportsmanship.

The annual inter-class basketball season is at the present writing at its height, with the Seniors, Juniors, and Sophs hitting it up in hot competition in the Class A boys' league, with the Sophs and Seniors leading the Class A girls' league, while in the Junior league (Class B), the 7 A boys and girls are exhibiting teams that bear ample promise of some excellent varsity teams in years to come.



PUBLICATION STAFF

Publication Staff

"PINE GROVE"

MARY BRADLEY	- - - - -	<i>Editor</i>
ERNEST PETREY	- - - - -	<i>Asst. Editor</i>
ROY GIBSON	- - - - -	<i>Business Mgr.</i>
KATHERINE DAVIS	- - - - -	<i>Social Editor</i>
SOPHIA GILBERT	- - - - -	<i>Joke Editor</i>
L. C. HENDERSON	- - - - -	<i>Faculty Advisor</i>

"MADON AND GOLD"

LANTA STRUNK	- - - - -	<i>Editor</i>
LEONARD SLUSHER	- - - - -	<i>Asst. Editor</i>
CHARLIE DEAN	- - - - -	<i>Business Mgr.</i>
EVA GRAGG	- - - - -	<i>Social Editor</i>
DELMAR CAWTHORNE	- - - - -	<i>Athletic Editor</i>
SOPHIA GILBERT	- - - - -	<i>Joke Editor</i>





Varsity Club

For a number of years the Varsity Club has been one of the most active organizations in the school. Although this club was not started until the second semester, it has made its presence felt during this time.

Its membership is somewhat exclusive, being made up of only the active athletes.

Besides being an active athletic club, which stands for better and cleaner athletics, it also takes a leading interest in other school affairs.

MEMBERSHIP

ERNEST PETREY, *President*

ARCHIE ROLLINS, *Vice-President*

DEE JAMES, *Secretary-Treasurer*

JAMES LANE

ROY GIBSON

DELMAS CAWTHORNE

DONALD CAWTHORNE

TIP HAMMONS

EDWIN SMITH

JAMES SMITH

HERBERT BRACKETT



Lioness Club

The Lioness Club is the newest organization in Pineville High—being made up of several of the liveliest girls in the school.

This club was organized about April 1st, 1926. The purpose and aim is to promote a better athletic spirit among the high school girls, to seek and get more and better material out for the Lioness teams in the future, and to create the highest type of school spirit and scholarship in general.

The girls who are privileged to wear the much coveted "P" felt like they wanted to do something for P.H.S. other than participating in the various contests, and this is the method decided upon. The first move for the club was to entertain the Mountain Lions Varsity with a banquet in the month of April. Big things are being looked forward to in the future.

MEMBERSHIP

LOUISE ASHER, *President*

MARIE HOWARD, *Vice-President*

MARY BRADLEY, *Secretary-Treasurer*

BOWMAN, ELIZABETH

CHAPPELL, MURIEL

HOLLINGSWORTH, MAE

STONE, GRACE

WILSON, GYPSY

WHITAKER, MARGARET

Class Will

We, the Senior Class of Pineville High School, the district eleventh, the County of Bell, the State of Kentucky, U. S. A., do publish and declare this to be our last will and testament, and do will and bequeath to the persons herein named, the following degrees of opportunity, embarrassment, disappointment, and thrills:

- To Ruth Rufty, Ernest Petrey's chewing gum.
- To Lillian Wilkerson, Mary Lindsay Bradley's disposition.
- To Paul Greene, Bob Helton's literary talents.
- To Leon Hoskins, Dee James' amorous glances.
- To Jeanette Adams, Grace Stone's blood curls.
- To Gypsy Wilson, Edna Greene's brassy nerve.
- To Donald Cawthorne, Sophia Gilbert's mathematical ability.
- To Daniel Wilson, Delmas Cawthorne's poetical ambition.
- To Margaret Whittaker, Eva Gragg's gentleness.
- To Hester Greene, L. G. Minton's marriage serenity.
- To Bill Ramsey Louise Asher's giggles.
- To Lucille Kelly, Opal Pursifull's boldness.
- To Leo Adams, Elvia's blood locks.
- To Tip Hammond, Lanta Strunk's Editorship.
- To Bessie Johnson, Mabel Bishop's glasses.
- To Burice Norrod, Charley Dean's reserve.
- To Marie Howard, Louise Wilson's sarcasm.
- To Marie Byrley, Nannie Murray's timidity.
- To Bernadine Culton, Mae Broughton's flirting eyes.
- To Sonny Dyer, Roy Gibson's good looks.
- To Herbert Brackett, Helen W's love for "Greene."
- To Maggie Ham, Leonard Slusher's brilliant English compositions.
- To Raymel Gaddie, Josephine Wilson's figure.
- To Mabel Hoskins, Hazel Byrley's grace.
- To Mae Hollingsworth, Katherine Davis' basketball form.
- To Roberta McDonald, Carl Hoskins' Caesarian ability.
- To Albert Boston, Delmas Cawthorne's love of women.
- To George Baker, Dee James' boldness.
- To Muriel Chappell, Josephine Wilson's dignity.
- To Frances Earl, Mae Broughton's ability to be quiet.
- To Hester Euster, Edna Greene's giggles.
- To Marie France, Katherine Davis' breaks.
- To Louise Galloway, Hazel's curls.
- To Ben Golden, Mary Lindsay Bradley's common sense.
- To Mildred Hill, Mabel Bishop's size.
- To Lena Isaacs, Eva Gragg's weight.
- To Jessie Johnson, Sophia's popularity.
- To Helen Johnson, Helen Weller's art.
- To Jim Lane, Pete's fondness for Barbourville.
- To Archie Rollins, Roy Gibson's straight hair.
- To Margaret Rouch, Louise Asher's temper.
- To Rossa Turner, Louise Wilson's alluring eyes.
- To Ethel Wood, Charley Dean's height.
- To Sarah Cunningham, Grace's studiosness.
- To Ware Bowman, Leonard Slusher's punctuality.

In witness hereof, we have hereunto set our hand and seal at Pineville High School, this 28th day of May, A. D., 1926.

(Signed) Senior Class of '26.

Prophecy

"Crystal gazing is very interesting," I murmured—and now may I see my old classmates in P.H.S.?

A face arises before me—Katherine Davis—she is laughing and seated at a piano. Someone is bending over her—talking—Delmas Cawthorne.

"They are married now," said the voice of the fortune teller.

I looked into the crystal depths again. What is that? A steamer on a tranquil sea. There are the figures of two people standing looking down—talking. They raise their faces—Charlie Dean and Carl Hoskins.

"The law firm of Dean & Hoskins is one of the most famous in America—They are going to Europe now, and it seems a great deal depends on the success of this venture."

The picture gradually faded away, and in its place appeared two faces—Lanta Strunk and Eva Gragg.

"They are both promoters of Education for Women—The darker one is Dean of a College For Women—The lighter, director of a system of camps."

Then—who can that be? Grace Stone!

"She is married, and is now living in a town not far from your old school 'Harlan,' I thought."

A whole group of faces appeared to me, and with a gasp I recognized all of them.

Louise Wilson, Nannie Murray, Mabel Bishop, Josephine Wilson, Mae Broughton, and Opal Pursifull!

"They are the few faithful ones who have kept the practice of reunion for graduates of '26.' The first one there, whose name begins with 'L' is one of the leading business women in your home town. The next is also a business woman, but in a far distant city—the third is a missionary to Africa, home on a vacation. The fourth, a school teacher in your old school—the last two are partners in a ladies' shoppe in a Kentucky town, the name of which begins with a 'C.'"

I thought of Cobbin. The group faded.

Two more faces appeared—Roy Gibson and Dee James.

"The one at the left, with the Grecian nose, is director of Athletics at a great University, probably one called 'Cornell.'" The monotonous voice went on.

"And the one at the right is Professor of Latin in a Kentucky College."

I could not suppress a smile at the last words. Again the vision changed.

Sophia Gilbert and Helen Weller!

The vivid brunette is married to a boy she liked very much during her Senior year.

"The other one is married to a boy she met one Christmas at her home—and who, at one time owned a Dodge car. Both girls are to go to Europe soon—I cannot tell what for."

Again I saw the picture change—

Robert Helton, L. G. Minton, and Leonard Slusher!

"They are business men in your old town." The voice continued.

The crystal's transparent depths changed again.

Mary Lindsay Bradley and Edna Green!

"The taller girl married one of the most prominent men in all Kentucky—It seems that he is a Senator.

"The shorter one is now traveling in South America—she is a journalist."

Louise Asher! I saw the third face added, and it seemed that she was talking to Mary—

"She is the wife of a Minister in your town."

Then I saw suddenly a strong and stalwart figure approaching in the distance—

"Ernest Petrey, President of the American Chemistry Association, now located in Boston, Mass., I believe," continued the voice.

My next vision was that of a saleslady—

"Elvia VanBever, the new manager of a millinery store in a Southern town," the voice told me.

The last vision was that of Hazel Byrley—

"She is the head of the department of Dramatic Arts at Chicago University."

For the last time the vision faded—the cycle had been completed—I had seen how the graduates of '26 had taken their places in life.

By H. B.

Jokes

Mr. Jones: "Where's your arithmetic, Hershel?"

Hershel: "I ain't got none."

Mr. L.: "Why Hershel, where's your grammar?"

Hershel: "She's dead."

Delmas: "Why dear, kissing is my only way of talking!"

Kate: "Then for goodness sake, shut up and talk some."

Old Lady: "Poor man, is there a way to get rid of those cooties?"

Tramo: "Dat's easy. I takes a bath in sand and den rubs down with alcohol. De cooties den gets drunk and kills each other trowin' rocks."

Idee: "The trouble with you is that you are spoiled."

Mary L.: "Oh no! that's the perfume you gave me for Christmas."

"That gas brings young people together."

"Social Worker?"

"No, he sells sofas."

Muriel: "Pete's awfully absent minded, isn't he?"

Louise A.: "Why?"

Muriel: "Why, the other night he was driving his parents over a lonely road, and they came in a particularly lonely spot and before he knew it he had jacked the car."

He: "Did you notice how the fire roddens?"

She: "I'm sure it's not because of anything we've done."

Mr. Murphy, who was addicted to telling strange stories, said he saw a man beheaded, with his hands tied behind him, who directly picked up his head and put it on his shoulders, in the right place.

"Ha, Ha, Ha!" said a bystander, "how could he pick up his head when his hands were tied behind him?"

"And sure what a surely fool ye are!" said Murphy; "and couldn't he pick it up wid his teeth?"

"If you are dissatisfied with what I have said tonight," said the Orator, "my only comment is that which a little girl made to her mother, who chided her because God would not be pleased with her sleaze prayer: 'Well it's the best he will get out of me tonight.'"

The fatal effect of a long continued use of tobacco has been illustrated in the case of a man at Boulogne, France, who died lately while smoking his pipe. He was one hundred and three years old.

On one occasion, when a boarder had devoured almost everything eatable on the table within his reach, and when the landlady had supplied him until her strength and patience were well-nigh exhausted, she suddenly broke out with—"I shall certainly have to raise the price of your board!" "Don't think of doing it," he replied, "it is nearly killing me now to eat all I pay for, and should you raise my board and compel me to eat more, it will be the death of me."

A painter, whose talents were but indifferent, turned physician. He was asked the reason for it. "In painting," answered he, "all the faults are exposed to the eye; but in physic, they are buried with the patient, and one gets off more easily."

A boy was called away from this earth and joined the great majority, and when he entered the portals of the upper sphere, St. Peter told him to mount the golden stairs, and giving him a piece of chalk, directed him to leave on each successive step a chalk mark for some sin that he had committed. After advancing a considerable distance, the boy met his father coming down, and said: "Dad, what's the matter; what are you coming back for?" "Out of chalk," was the answer.

A gentleman of Pineville gave his servant-maid the following "character:" "The bearer has been in my house a year minus eleven months. During that time she has shown herself diligent at the house door; frugal in work; mindful of herself; prompt in excuses; friendly toward men; faithful to her lovers; and honest when everything has vanished."

When I get to heaven, said a woman to her Baconian husband, "I am going to ask Shakespeare if he wrote those plays." "Maybe he won't be there," was the reply. "Then you ask him," said the wife.

"Well, Sambo, how do you like your new place?"

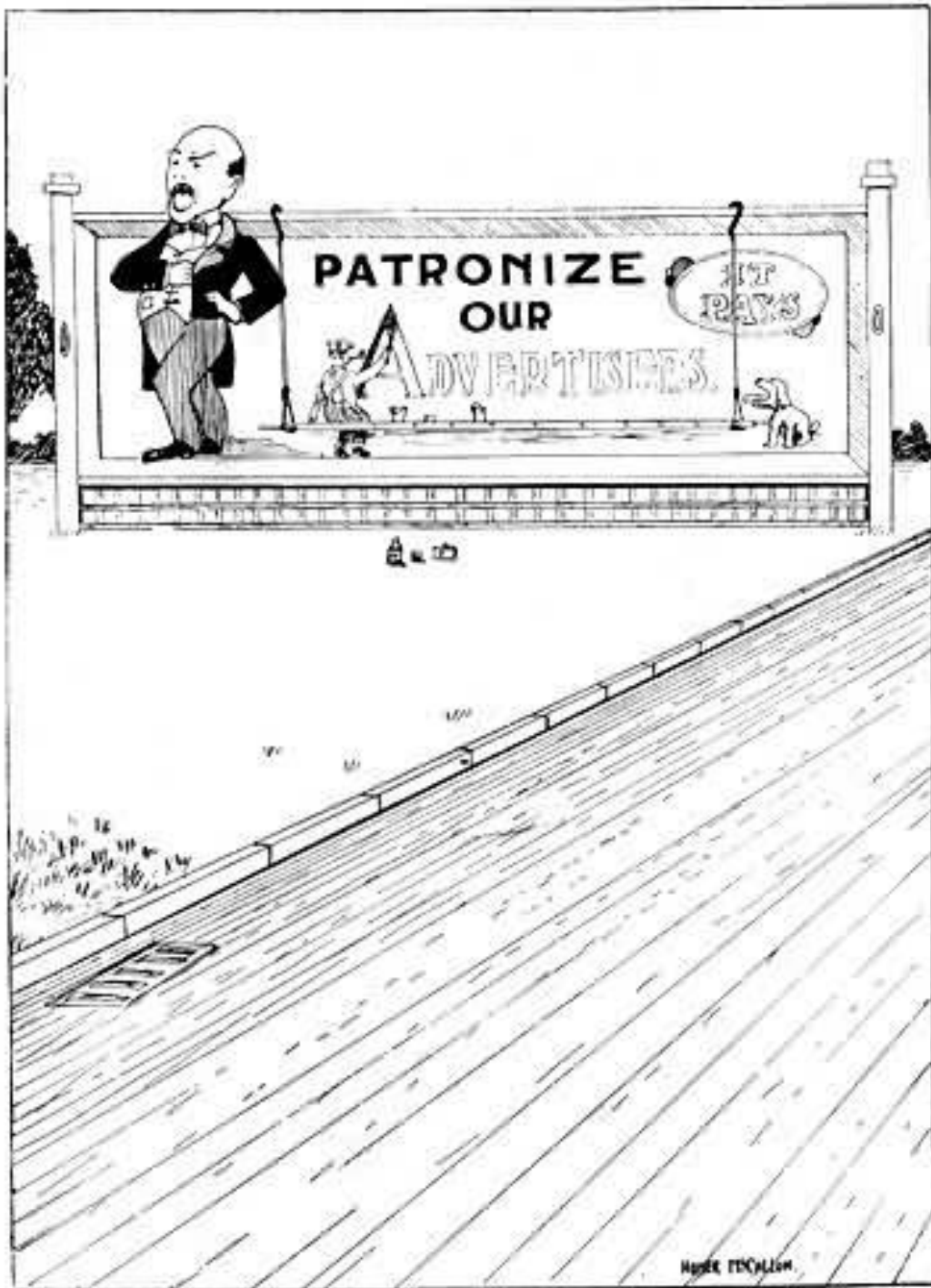
"Berry well, Massa."

"What did you have for breakfast this morning?"

"Well, you see, Massa heled three eggs for herself and gib me de broff."

"Look here, nigger," said a knowing darkey to his companion, "don't stan' on de railroad!" "Why, Joe?" "Kase ef de cars see dat mouf ob yours, dey will tink it am de danger an' run right in."

A ship at sea being in great danger, everybody was observed to be on his knees except one man; who, being called upon to come with the rest of the hands to prayers, answered: "Not I, it's your business to take care of the ship, I'm a passenger."



BRANDENBURG & GIBSON

**HARDWARE, FURNITURE, UNDERTAKERS
AND EMBALMERS**

*More Floor Space Than Any Other
Store in Town*

GIBSON-LOW MOTOR CAR CO.

INCORPORATED

Dealers in

PACKARD

DODGE BROS.

AUTOMOBILES AND TRUCKS

HUDSON

ESSEX

Full Line of Accessories

UTOTEM GROCERY

The Home of Chase and Sanborn's Teas and Coffees, Richelieu Products
Agents for Holland Butter

FRESH AND CURED MEATS, FRUITS AND
VEGETABLES
PASTRIES AND CANDIES

CALL EARLY FOR PROMPT DELIVERY
PHONES:—CUMBERLAND 63, HOME 14

PINEVILLE

KENTUCKY

A. RECTOR

Diamonds, Watches and
Jewelry
Optical Goods, Silverware, Clocks,
Musical Instruments, Etc.
PINEVILLE KENTUCKY

Compliments of
**Faulkner Garment
Company**

STAR STORE

Latest in
READY-TO-WEAR
FOR THOSE
WHO CARE

*Compliments
of*
**Baird Grocery
Company**

THIS OFFICE IS A LOYAL SUPPORTER OF
PINEVILLE HIGH SCHOOL

DR. J. S. CORNN
DENTIST

BRANCH HOUSE, BAXTER, KY.

BELL GROCERY COMPANY

INCORPORATED

WHOLESALE GROCERS

PROVISIONS, HAY, GRAIN, FEED AND FLOUR

We Carry Everything in Staple and Fancy
GROCERIES

Make a Specialty of California Fancy and Extra Fancy
Canned Fruits

Home Made Preserves, Jellies and Jams
VON ALLMEN MAKE

ED SAMUELS

AT

FIRST STATE BANK
PINEVILLE KENTUCKY

SELLS
LIFE INSURANCE
ON CREDIT

*See Him First and You
Won't Need to See
Anyone Else*

**Kirk Plumbing and
Heating Co.**

INCORPORATED

CUMBERLAND PHONE 28

Compliments of
**PINEVILLE
INSURANCE AGENCY**

GENERAL
INSURANCE
R. D. ASHER, MGR.
PINEVILLE KENTUCKY

ON THE PINE CONE

CONTRIBUTED BY

**THE LIBERTY
COAL & COKE
COMPANY**

IN INTEREST OF BETTER
SCHOOLS

**Virginia-Harlan Coal
Corporation**

WHIPPLE COAL

PICTURES FOR THIS ANNUAL MADE BY

THE BARNER STUDIO

"PORTRAITS THAT PLEASE"

PINEVILLE
KENTUCKY

MENU ADDITIONS AT
New York Lunch Room

GEORGE SARBAS, Prop.

HOT WAFFLES HOT CAKES
COFFEE DOUGHNUTS

Cereals, All Kinds, Eggs, Any
Style Can Be Served
at Any Time

BEST SANDWICHES IN TOWN

Pineville Tailoring Co.

Incorporated

BOOSTER OF PINEVILLE
ATHLETIC ASSOCIATION

*See Joe the Tailor if you
want a fit*

SAM D. GUNN
AGENT

THE
NORTHWESTERN MUTUAL
LIFE INSURANCE CO.
The Policy Holders Co.

52.4% of the New Business Issued
in 1924 Was Upon Old Policy
Holders

LET US SERVE IN THE
FUTURE AS IN THE PAST

The REXALL Store Carries the
Best Goods Obtainable and Al-
ways Tries to Give Best Service

CHARLES GRAGG
THE REXALL STORE

PINEVILLE WHOLESALE GROCERY CO.

INCORPORATED

GROCERIES, HAY, GRAIN, FEED
FLOUR AND MEAL

*We Strive to Please All Customers
Assure Prompt Delivery*

PHONE: CUMBERLAND 233

PINEVILLE

::

KENTUCKY

**SUN PUBLISHING
COMPANY**

INCORPORATED

**COMMERCIAL
PRINTERS**

Publishers of the
PINEVILLE SUN

*An Independent
Newspaper*

**CHAPPELL
GROCERY COMPANY**

**WHOLESALE
GROCERS**

Hay and Grain
*Distributors of Miss
Muffett Flour*

PINEVILLE KENTUCKY

**GEM THEATRE
PICK OF PICTURES**

PARAMOUNT
UNIVERSAL
FOX PRODUCERS
FIRST NATIONAL
METRO GOLDWYN
WARNER BROS.
UNITED ARTISTS

A Wonderful Variety of Pictures
Showing—All the Worth
While Productions

When You Visit Our Theatre You
Can Feel Assured That You Will
Get the Best of Entertainment

Hear the "GLOOM CHASERS"
That Red Hot Orchestra
Every Night

**BYRLEY
SUPPLY COMPANY**

Incorporated

**HAY, GRAIN, FEED
AND FLOUR**

Mine and Builders'
Supplies

DISTRIBUTORS OF THE
Celebrated Purina Chows

OFFICE AND MAIN BUILDINGS
REAR BELL NATIONAL BANK
BUILDING

PHONES:
CUMBERLAND 119
HOME 54

FIRST STATE BANK

PINEVILLE, KY.

TIME-TRIED

PANIC-TESTED

Under the Same Management
On the Same Spot
Since 1899

GROWING STRONGER EACH YEAR

**NEW SANITARY
MARKET**

INCORPORATED

**GROCERIES AND
MEATS**

Batavia Products

CUMB. PHONE - HOME PHONE
112 245

L. J. PURSIFUL
Manager

**FLOCOE
SWEET SHOPPE**

HARRY
AND
JACK

...

*WHERE EVERYONE
MEETS*

<p style="text-align: center;">GARBER'S (SAULS)</p> <p style="text-align: center;">:::</p> <p style="text-align: center;"><i>The New Store With New Prices</i></p> <p style="text-align: center;">:::</p> <p style="text-align: center;">SHOES, DRY GOODS READY-TO-WEAR</p>	<p style="text-align: center;"><i>"If you do not like the odor of gas" in your clothing when cleaned</i></p> <p style="text-align: center;">SEND THEM TO THE PINEVILLE STEAM LAUNDRY</p> <p style="text-align: center;">"CLEANED THE BENZOL WAY"</p>
<p style="text-align: center;"><i>Compliments of</i> E. B. WILSON ATTORNEY FOR CITY OF PINEVILLE</p>	<p style="text-align: center;">PINEVILLE NOT ONLY HAS A GOOD SCHOOL</p>
<p style="text-align: center;">Great Southern Refin- ing Company PINEVILLE KENTUCKY</p>	<p style="text-align: center;">IT HAS A GOOD</p>
<p style="text-align: center;">Patterson Lumber Co. LUMBER Building Material, Doors Windows, Roofing, Etc. BEAVER BRAND VULCANITE ROOFING, ALL KINDS PINEVILLE KENTUCKY</p>	<p style="text-align: center;">HARDWARE STORE J. M. GREENE & SONS</p>



Have You Ever
Stopped to Consider
the Value of
Your Eyesight and
What You Are Doing to
PRESERVE IT?

Shaded Lamps
Eliminate
Glare
The Greatest
Enemy of
the Eye

*Consult Us About
Your Lighting
Problems*

**KENTUCKY UTILITIES COMPANY
INCORPORATED**

Trade Where Your Money is Appreciated

Burchfield & Jackson

Successors to
PHILLIPS & PATTERSON

Unquestionably 100 Per
Cent Behind the School
and Athletics

OUR MOTTO:
*"Service, Efficiency
Courtesy"*

C. B. HOSKINS
Manager

**WILSON'S DRUG
STORE**

ALWAYS A BOOSTER
FOR
PINEVILLE
HIGH SCHOOL.

PINEVILLE KENTUCKY

Compliments
of
**PINEVILLE
FURNITURE
COMPANY**
INCORPORATED

**Brock Dry Cleaning
Company**

For Quick Service—Efficiency in Work and Courteous Treatment

Call
215 CUMBERLAND PHONE

*We Please Our
Customers*

Come to—

Miss Osborne's Shop
For UNUSUAL AND SUITABLE
GIFTS — BEAUTIFUL UNDER-
WEAR, SILK AND MUSLIN
GORDEN HOSE

Royal Society Art Needle Work
Sheer Materials for Graduation
Dresses, Materials for Your Summer
Wardrobe. Hats, Straight
from New York to You.

Compliments
of
JAMES DANIELS
OF
NEW YORK

THE OFFICE AT No.
207 VIRGINIA AVE.
WEST, IS FOR THE
HIGH SCHOOL

Compliments
of
ELLIOTT & BOLTON
QUALITY AND PRICE
PLUS SERVICE

Compliments
of
**Parrott Hotel
Terminal Lunch Room**

BELL NATIONAL BANK

ESTABLISHED 1904

RESOURCES OVER \$1,000,000.00

WHITE L. MOSS

AGENCY MANAGER FOR KENTUCKY

NATIONAL LIFE INSURANCE CO. OF THE U.S.A.

Chicago's Oldest and Strongest

PINEVILLE, KENTUCKY

The Newest Always
FOR
MEN'S WEARING
APPAREL
ISAAC'S STORE

FORD, FORDSON and
LINCOLN

*Authorized
Dealers*

Only Genuine Ford Parts
Sold Here

TRY OUR SERVICE--IT IS
GUARANTEED

**PINEVILLE
MOTOR CO.**
INCORPORATED

COMPLIMENTS

DR. W. S. MORY
CHIROPRACTOR

Flocoe Building

Ask Your Grocer for
**BLUE RIBBON MILK
BREAD**

Made by

**The Consolidated
Baking Co.**

INCORPORATED

PINEVILLE KENTUCKY

A. B. GILBERT & CO.

**ALL KINDS OF
INSURANCE**

We have Paid to Our
Policy Holders
in the 16 Years More
Than a Quarter of a
Million Dollars

*We know how to write
Your Insurance*

Will be glad to serve you

Compliments

of

**RUSSELL-BARLOW
HARDWARE CO.**

INCORPORATED

**IF IT IS ANYTHING
IN THE DRUG LINE
WE HAVE IT**

The Largest Prescription
Drug Store in South-
eastern Kentucky

BINGHAM DRUG CO.

*Efficient, Courteous and
Appreciative
Drug Store Service*

PHONES:

TRI. STATE CUMBERLAND
141 379

Compliments
of
J. G. ROLLINS
ATTORNEY-AT-LAW

REX MOTOR CO.

PAIGE
JEWETT

Also Distributors of
OVERLAND AND
WILLYS-KNIGHT
MOTOR CARS

PINEVILLE KENTUCKY

HEADQUARTERS
FOR
HOME BUILDERS

Wasioto Lumber Co.
PINEVILLE
KENTUCKY

ASTOR CAFE
INCORPORATED

WELLER & LANE
MANAGERS

FOR FRESH MEATS
QUICK SERVICE
GOOD MEALS
—Try Us

ALWAYS A GOOD SHOW AT

THE

GAINES THEATRE

PINEVILLE'S

POPULAR AMUSEMENT

HOUSE

L. C. POWERS AND SONS
BUILDING CONTRACTORS

Heavy Construction a Specialty

KNOXVILLE • PINEVILLE
MIDDLESBORO

Cumberland Phone: Knoxville 1692, Middlesboro 503-W
Pineville 373

N. T. Arnett and Son

We Don't Keep Radios
We Sell Them

SEE US BEFORE YOU BUY

ATWATER KENT

Attractive Prices Easy Terms

BROOKS MOTOR CO.

CHEVROLET
SALES

At Your Service

PINEVILLE KENTUCKY

HEADQUARTERS FOR
SEIBERLING ALL-TREAD TIRES



Boone Trail Service Station
OFFICIAL A.A.A.

Dealers in
STUDEBAKER CARS

Repair Work of All
Kinds

Prompt Service

FARMER AND CO.

PINE STREET
PINEVILLE KENTUCKY